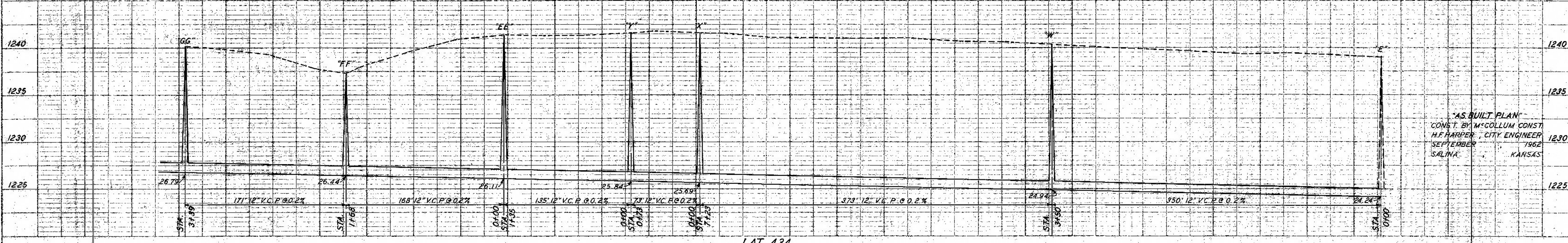


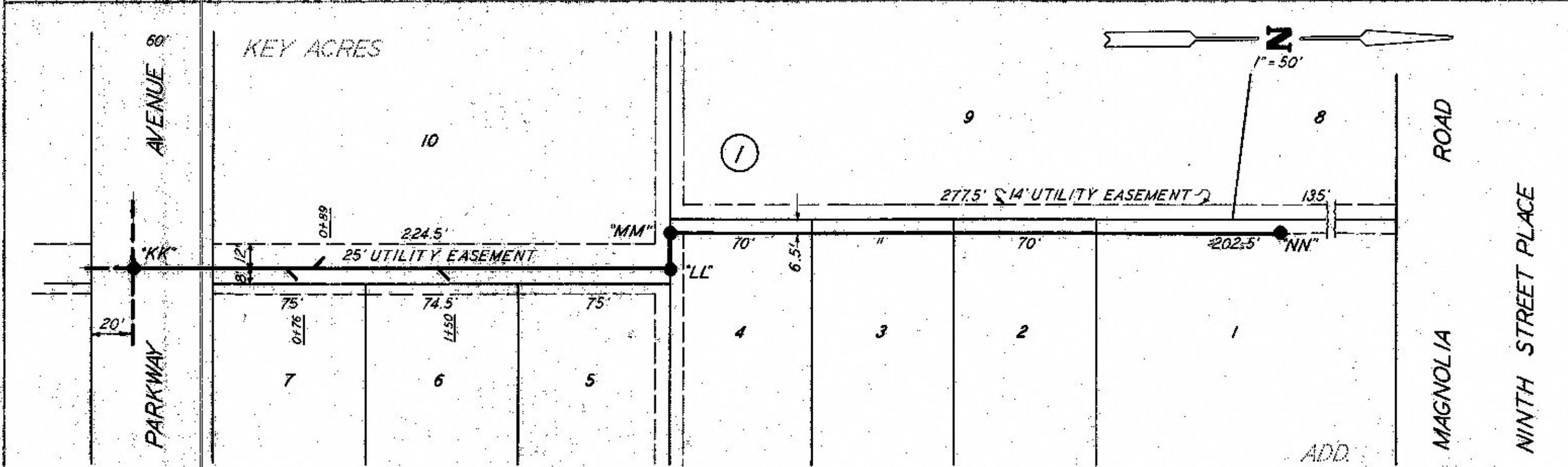
SANITARY SEWER - R/W S. OF PARKWAY FROM BELMONT TO SIMMONS

DATE: _____
 SHEET NO.: _____
 PROJECT: _____
 DRAWN BY: _____
 CHECKED BY: _____



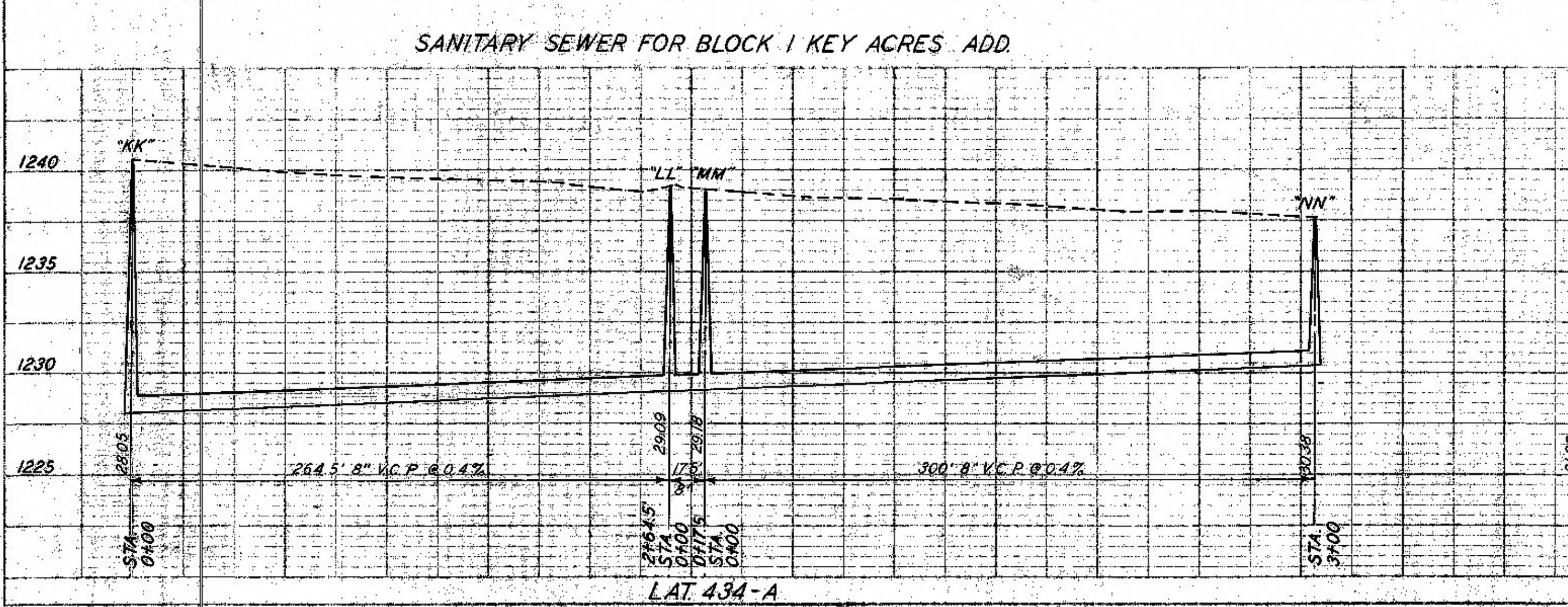
"AS BUILT PLAN"
 CONST. BY M. GOLLUM CONST.
 H.F. HARPER, CITY ENGINEER
 SEPTEMBER 1962
 SALINA, KANSAS

LAT. 434

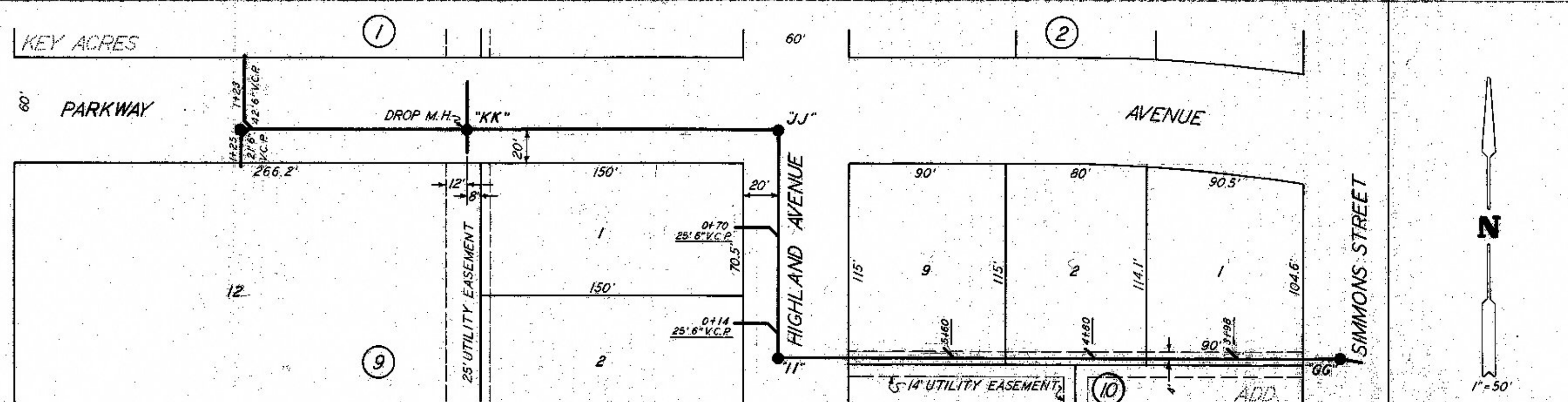


SANITARY SEWER FOR BLOCK 1 KEY ACRES ADD

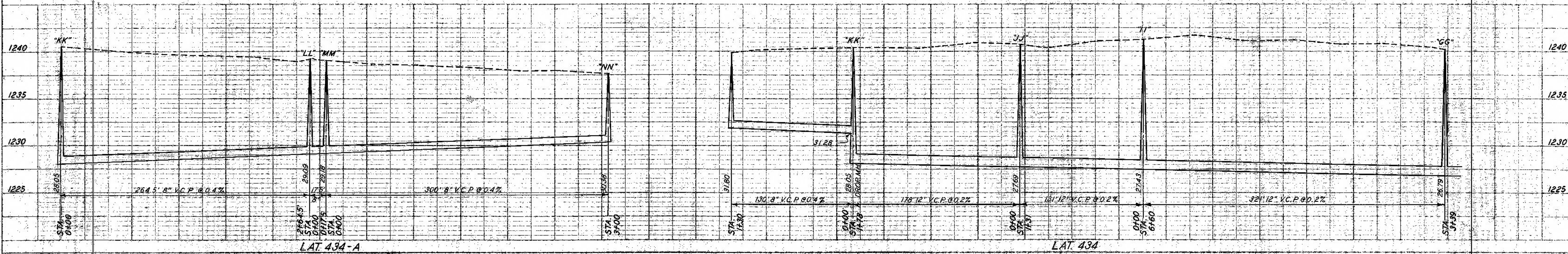
DATE: _____
 SHEET NO.: _____
 PROJECT: _____
 DRAWN BY: _____
 CHECKED BY: _____



LAT. 434-A



SANITARY SEWER - R/W S. OF PARKWAY FROM SIMMONS TO R/W W. OF HIGHLAND



LAT. 434