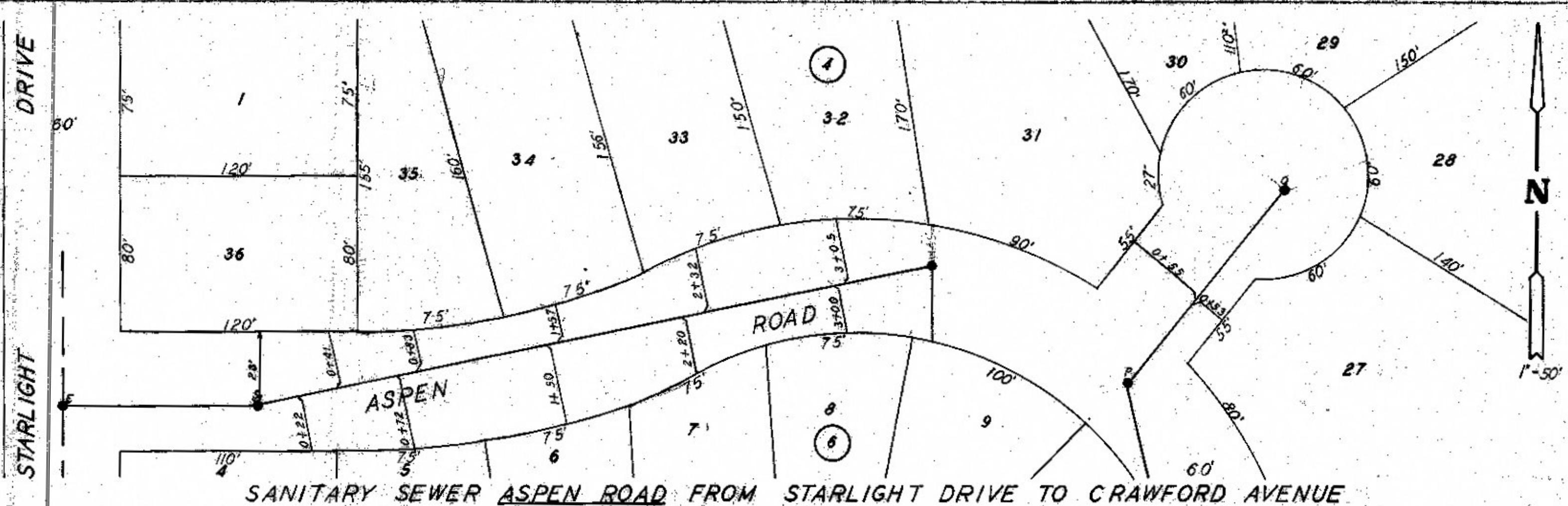
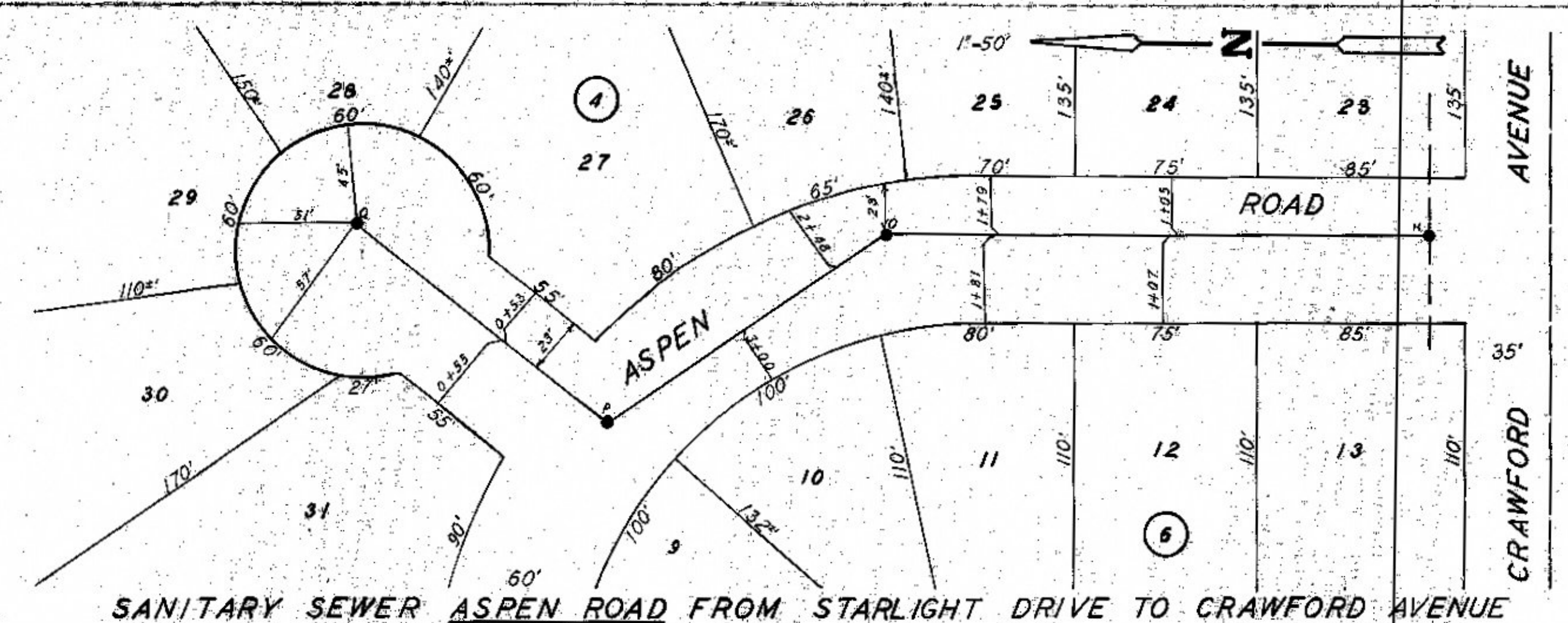


PLAN
SURVEYED
PLOTTED
NOTE BOOK
ALIGNED CHECKED
NO. OF ANY CREDITS

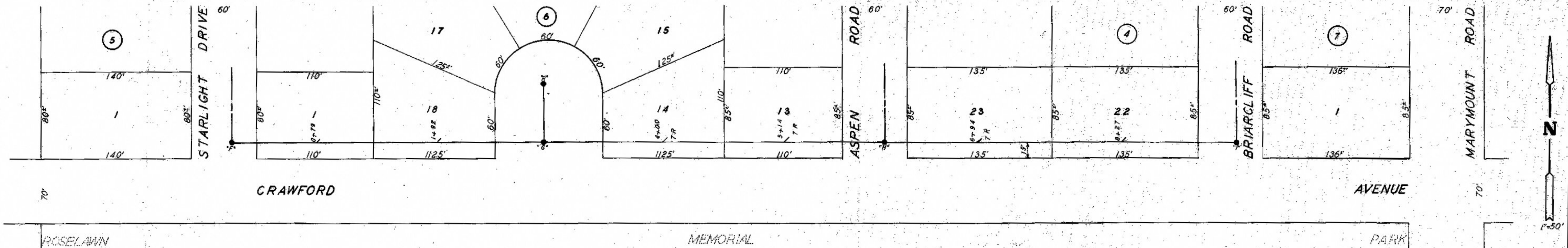
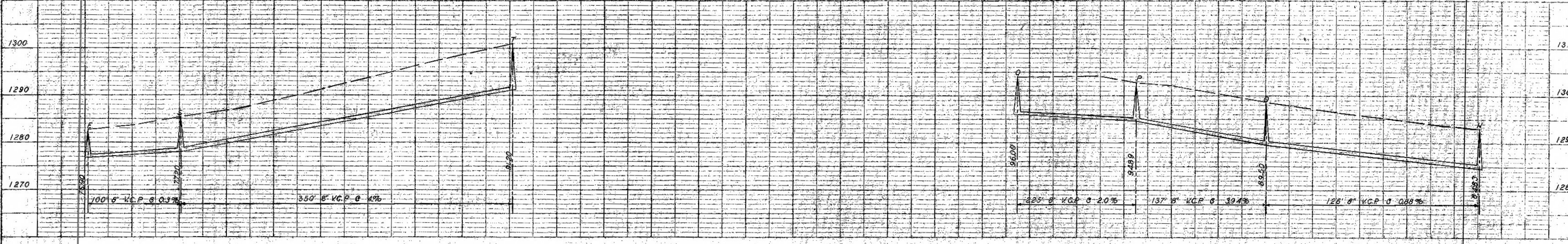
PROFILE
SURVEYED
PLOTTED
GRADES CHECKED
NOTE BOOK
STRUCTURE NOTATIONS SHOWN



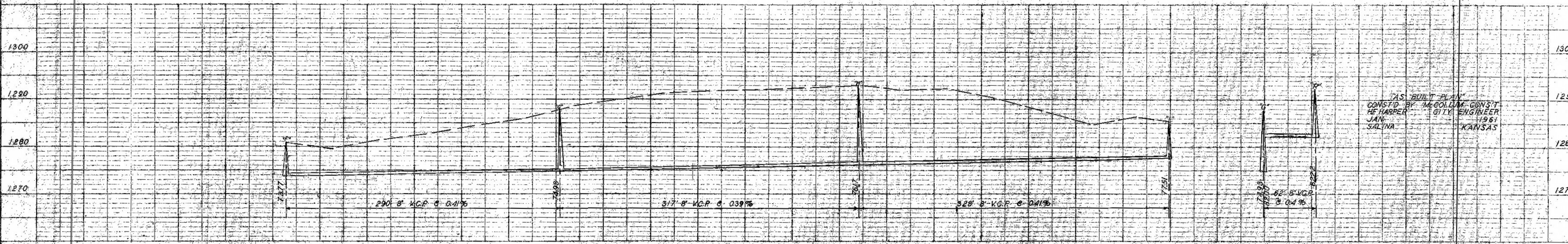
SANITARY SEWER ASPEN ROAD FROM STARLIGHT DRIVE TO CRAWFORD AVENUE



SANITARY SEWER ASPEN ROAD FROM STARLIGHT DRIVE TO CRAWFORD AVENUE



SANITARY SEWER CRAWFORD AVENUE FROM STARLIGHT DRIVE TO BRIARCLIFF ROAD LINE 'C'



AS BUILT PLAN
CONS'D BY McCOLLUM CONS'T
OF HARPER CITY ENGINEER
JAN 1961
SALINA KANSAS