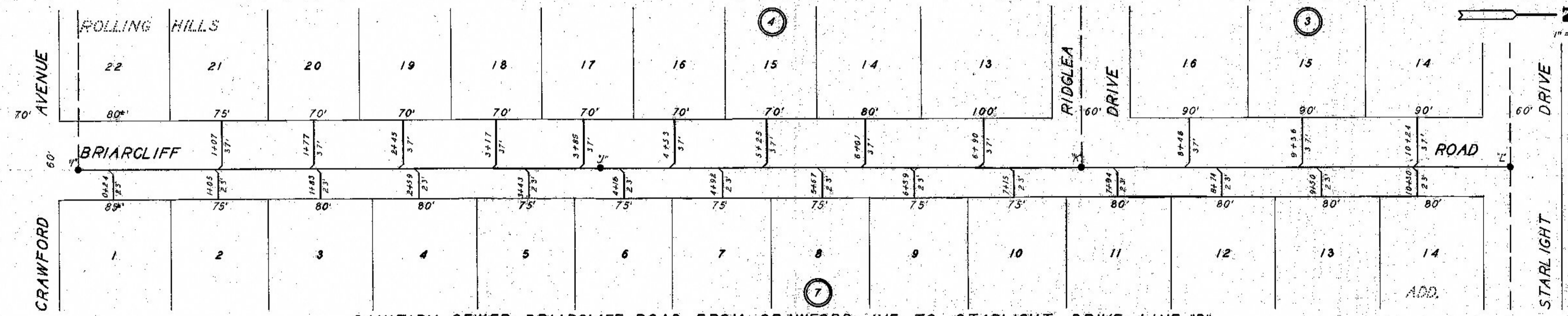
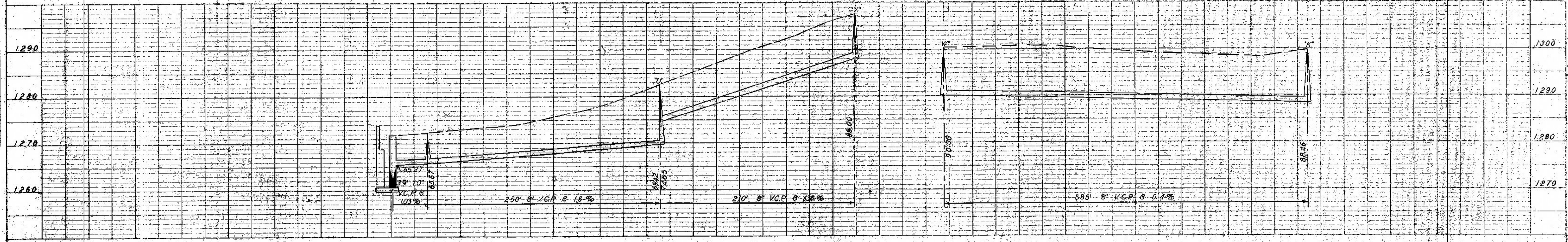
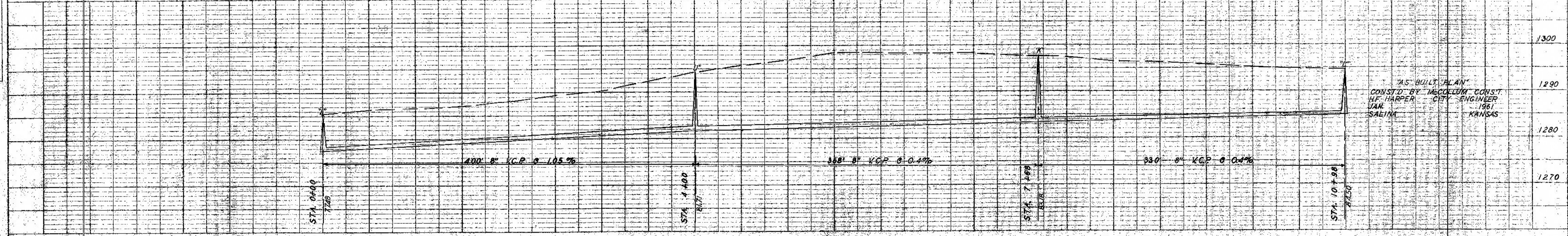


SANITARY SEWER RIDGLEA DRIVE FROM STARLIGHT DR. TO BRIARCLIFF ROAD LINES "G" AND "K"



SANITARY SEWER BRIARCLIFF ROAD FROM CRAWFORD AVE. TO STARLIGHT DRIVE LINE "D"



"AS BUILT" PLAN
 CONST'D BY McCOLLUM CONST
 H.F. HARPER CITY ENGINEER
 JAN 1961 KANSAS
 SALINA

PLAN
 SURVEYED BY
 PLOTTED BY
 CHECKED BY
 NO. OF WAY CHECKED
 NO.

PROFILE
 SURVEYED BY
 PLOTTED BY
 CHECKED BY
 NO. OF WAY CHECKED
 NO.