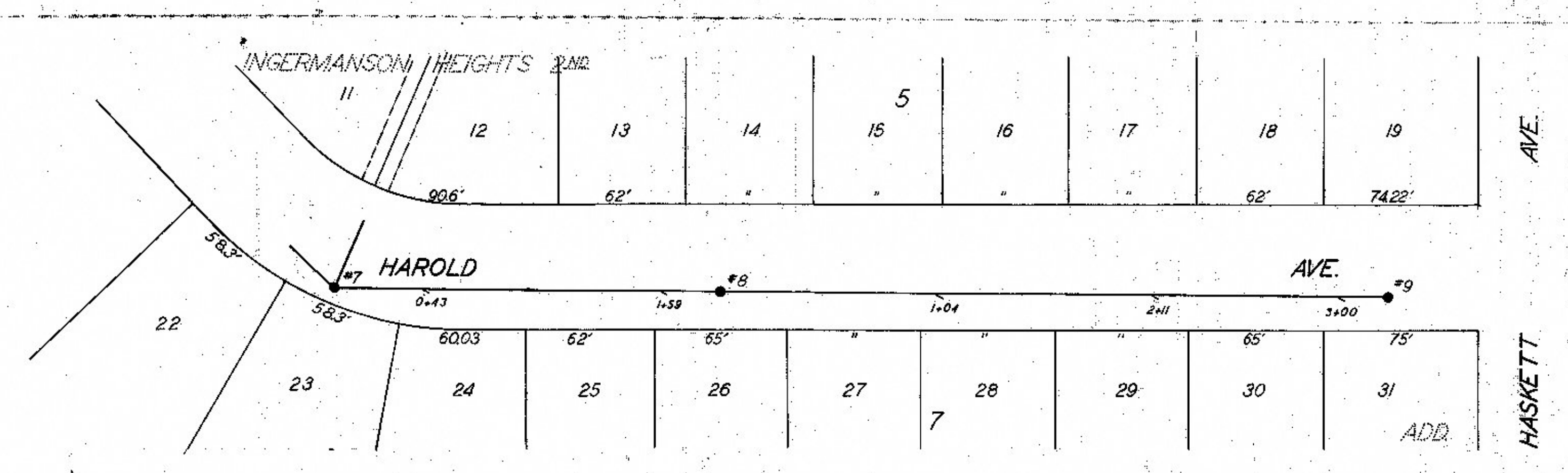
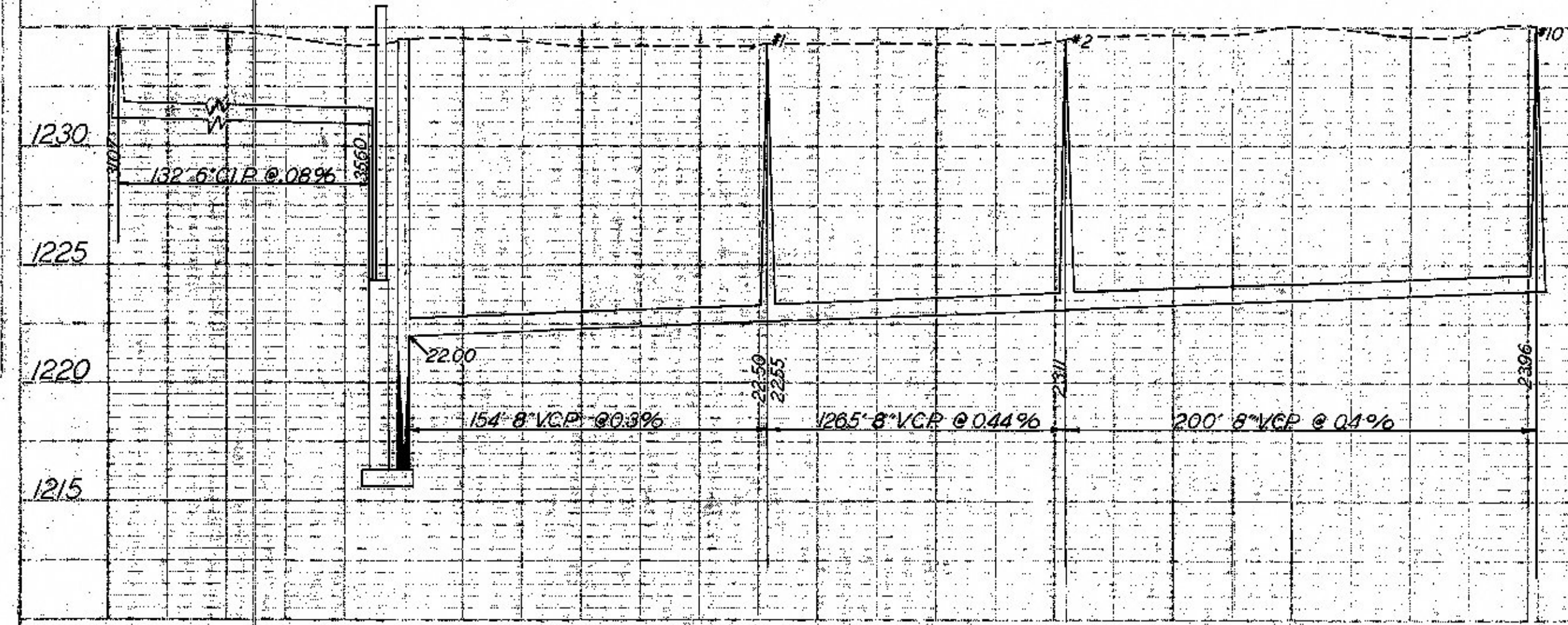


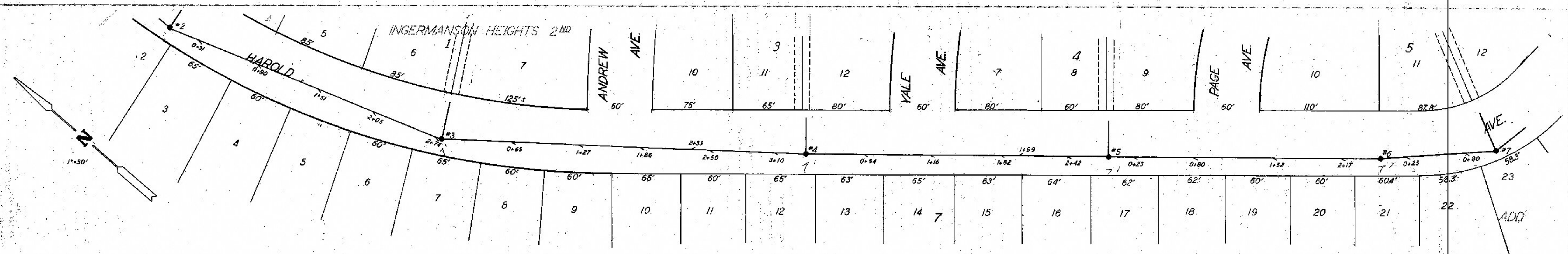
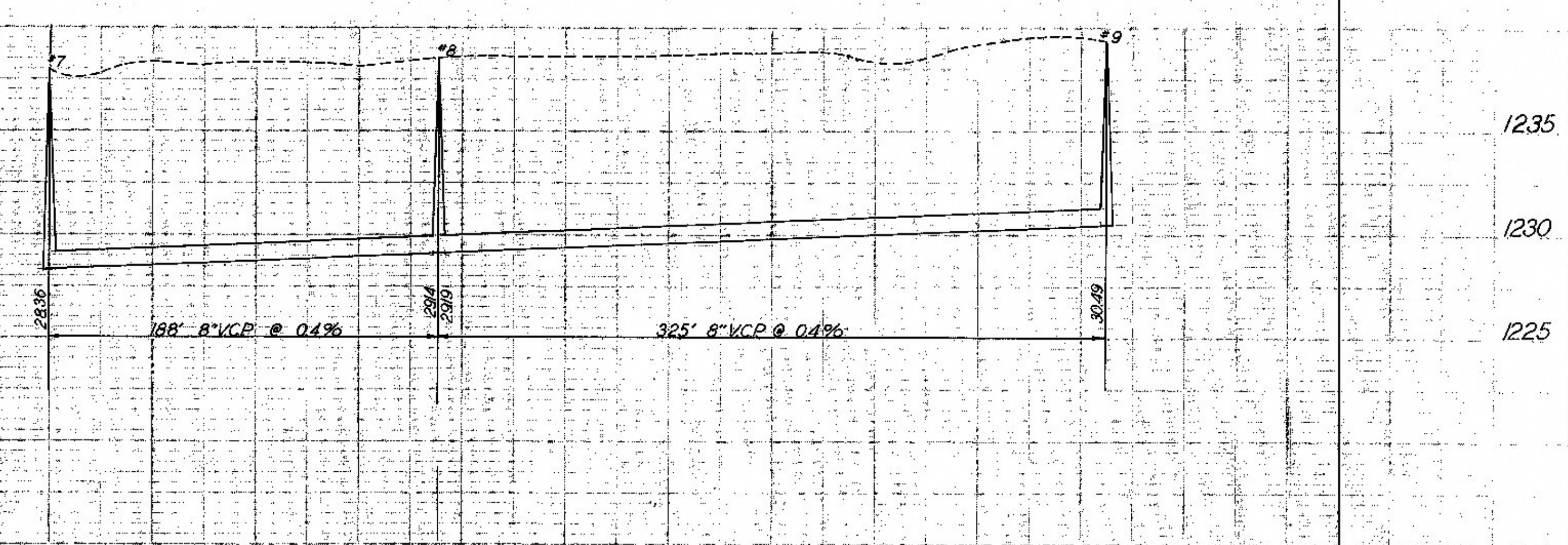
SANITARY SEWER - HAROLD - TALLEY TO 126.5' SOUTH



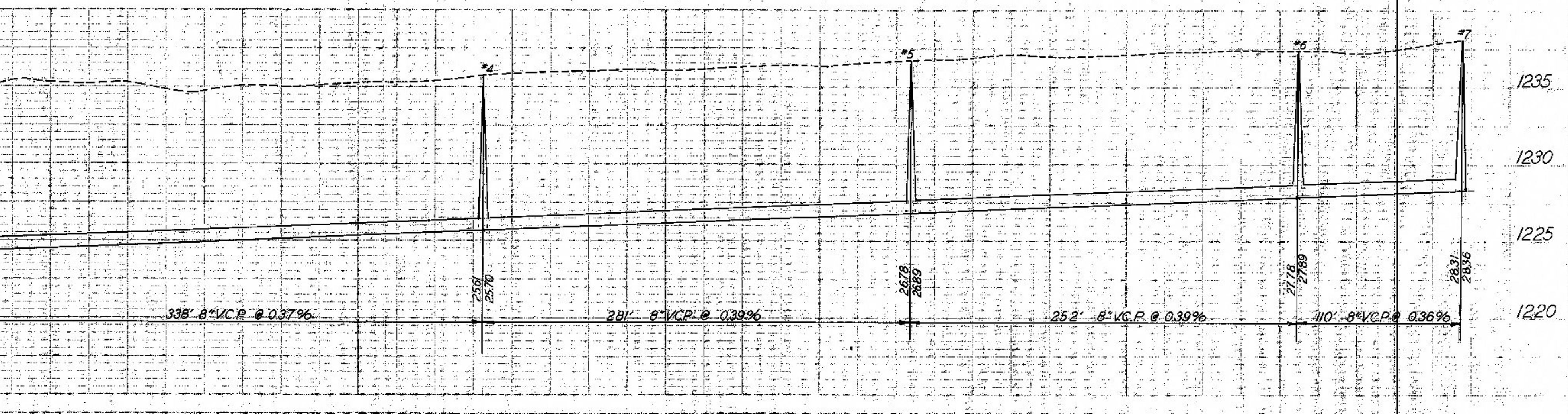
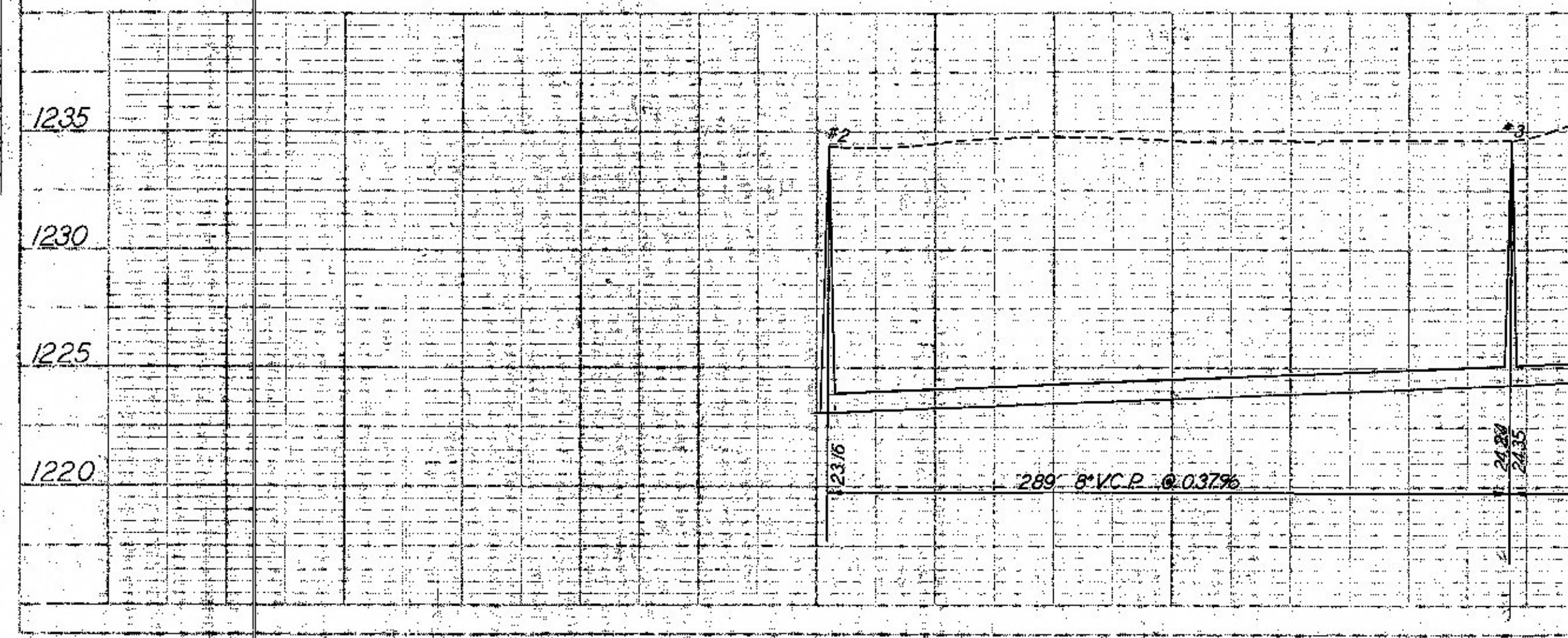
SANITARY SEWER - HAROLD - PAGE TO HASKETT



AS BUILT PLAN  
 CONSTRUCTED BY  
 MICHAELSEN CONST.  
 ENGINEERED BY  
 BOYER, SWEENEY & HAGADORN  
 SEPT. 1960.



SANITARY SEWER - HAROLD - ANDREW TO PAGE



PLAN  
 DATE: 10/1/60  
 DRAWN BY: J. H. BOYER  
 CHECKED BY: J. H. BOYER  
 NO. OF REVISIONS: 0

PROFILE  
 DATE: 10/1/60  
 DRAWN BY: J. H. BOYER  
 CHECKED BY: J. H. BOYER  
 NO. OF REVISIONS: 0