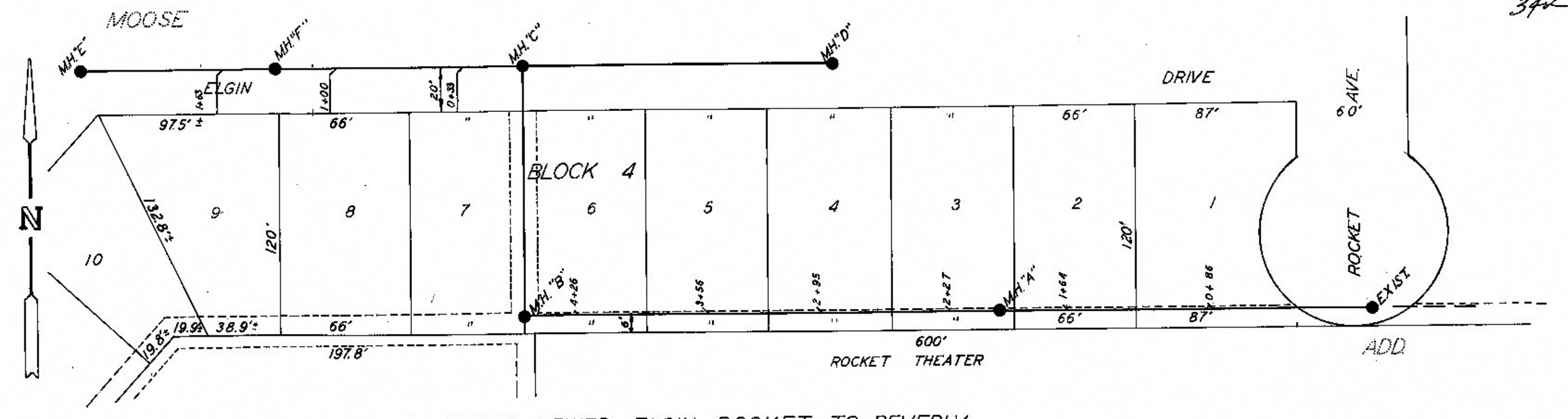
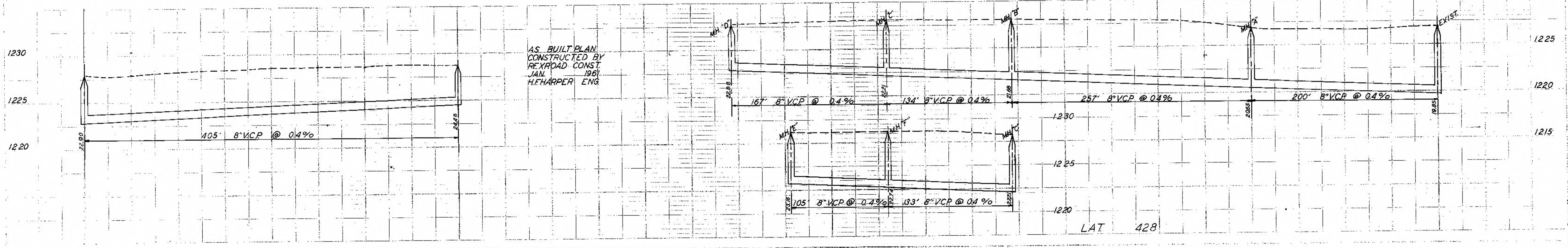


SANITARY SEWER - JAMESON - ELGIN TO BEVERLY

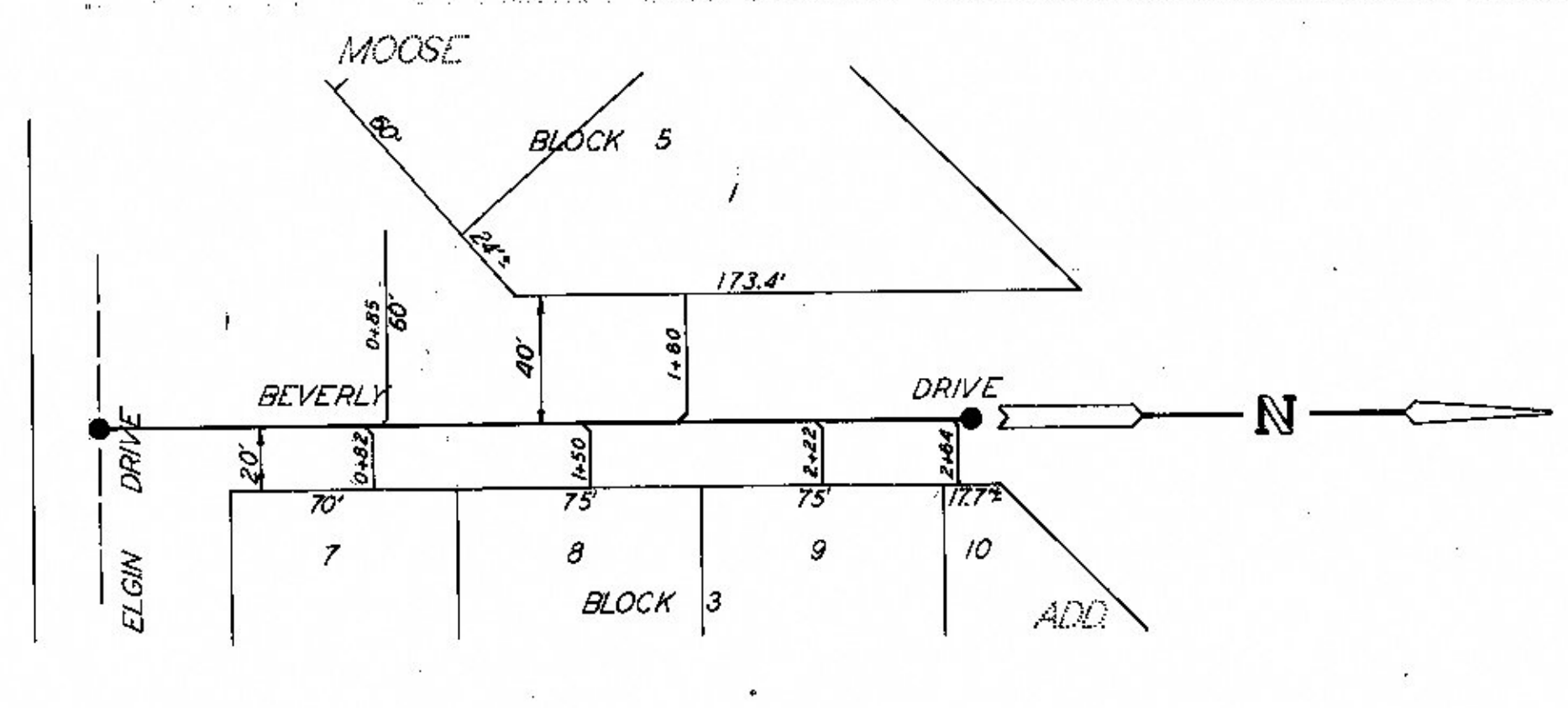


SANITARY SEWER - ELGIN - ROCKET TO BEVERLY

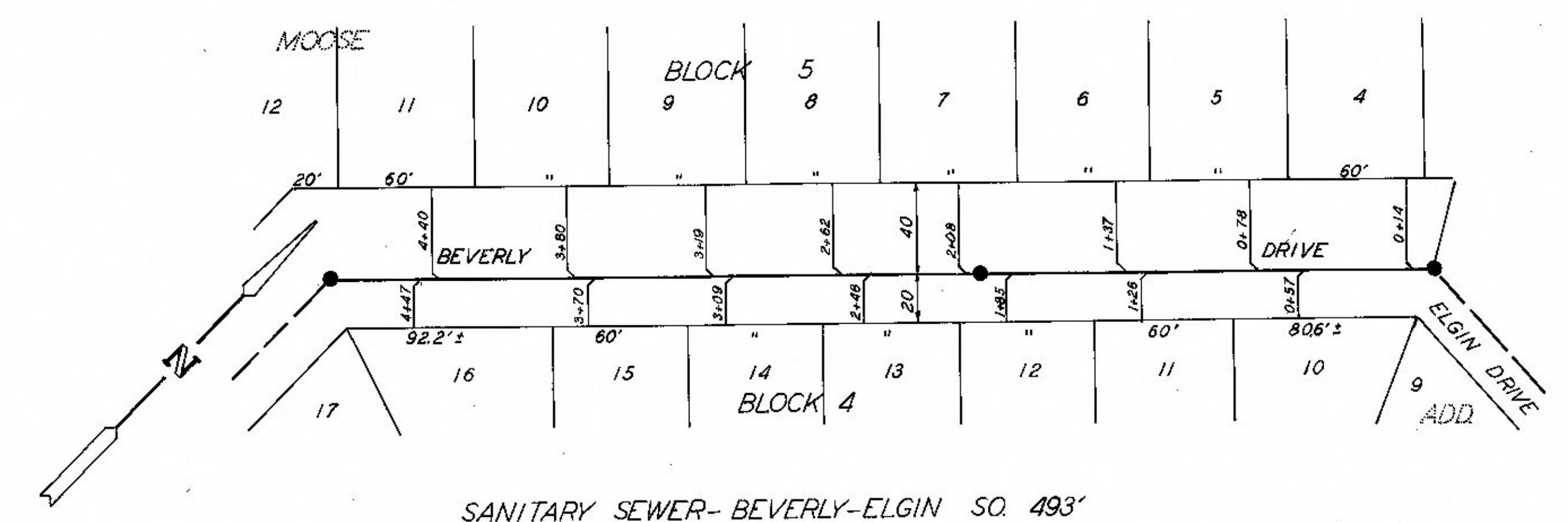
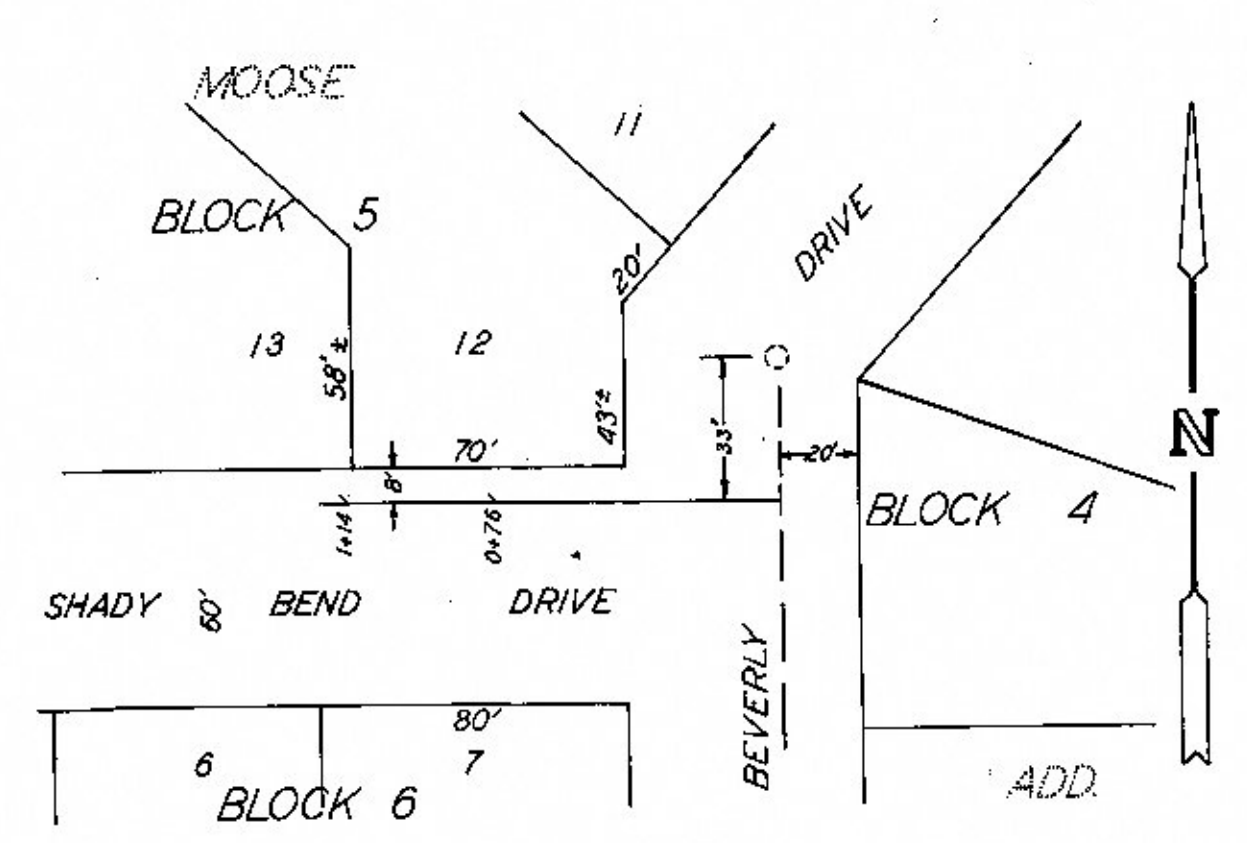


AS BUILT PLAN
CONSTRUCTED BY
REYROAD CONST
JAN. 1961
H. HARPER ENG.

LAT 428



SANITARY SEWER - BEVERLY - ELGIN TO BEVERLY



SANITARY SEWER - BEVERLY - ELGIN SQ. 493'

