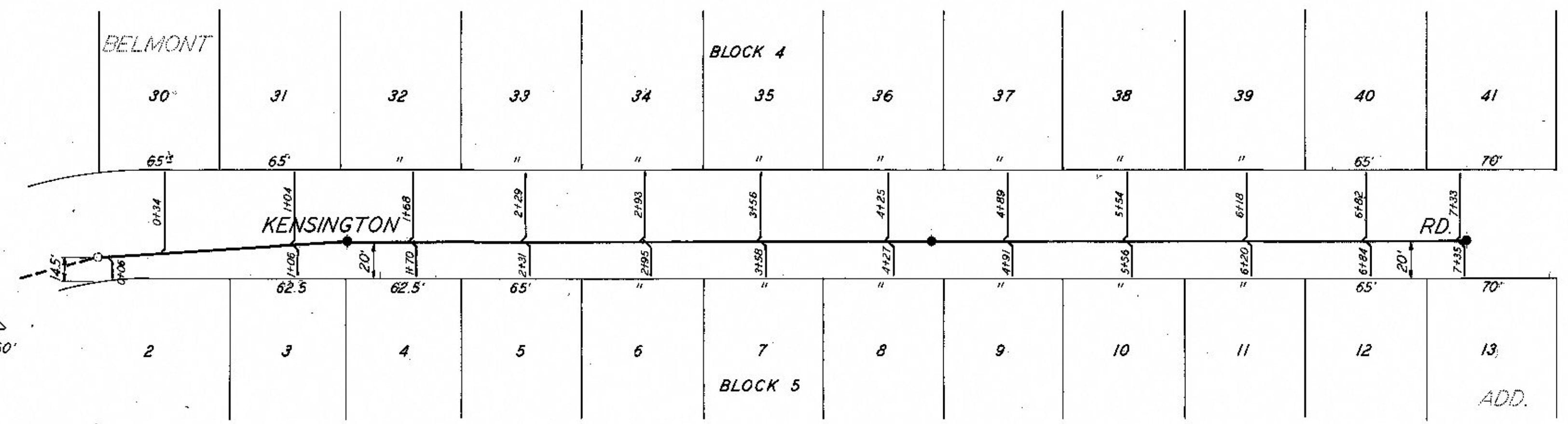
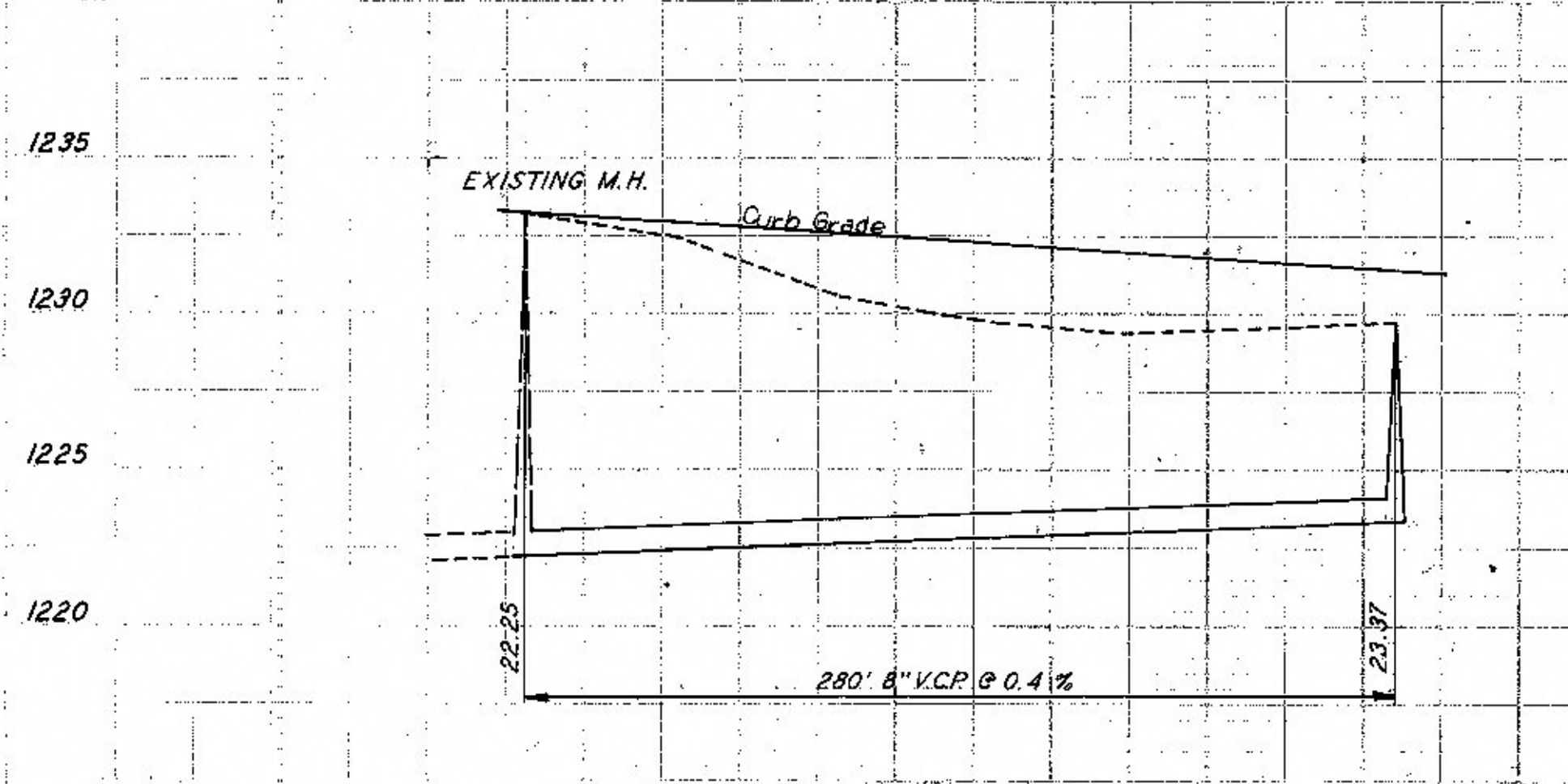


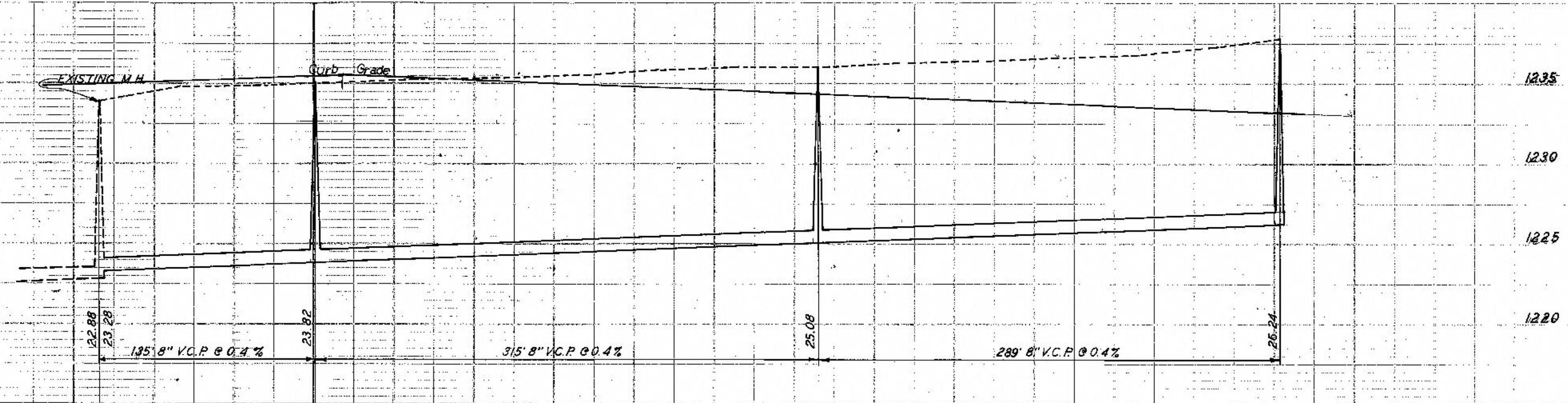
SAN SEWER WESLEY - EXIST. M.H. S. TO BELMONT



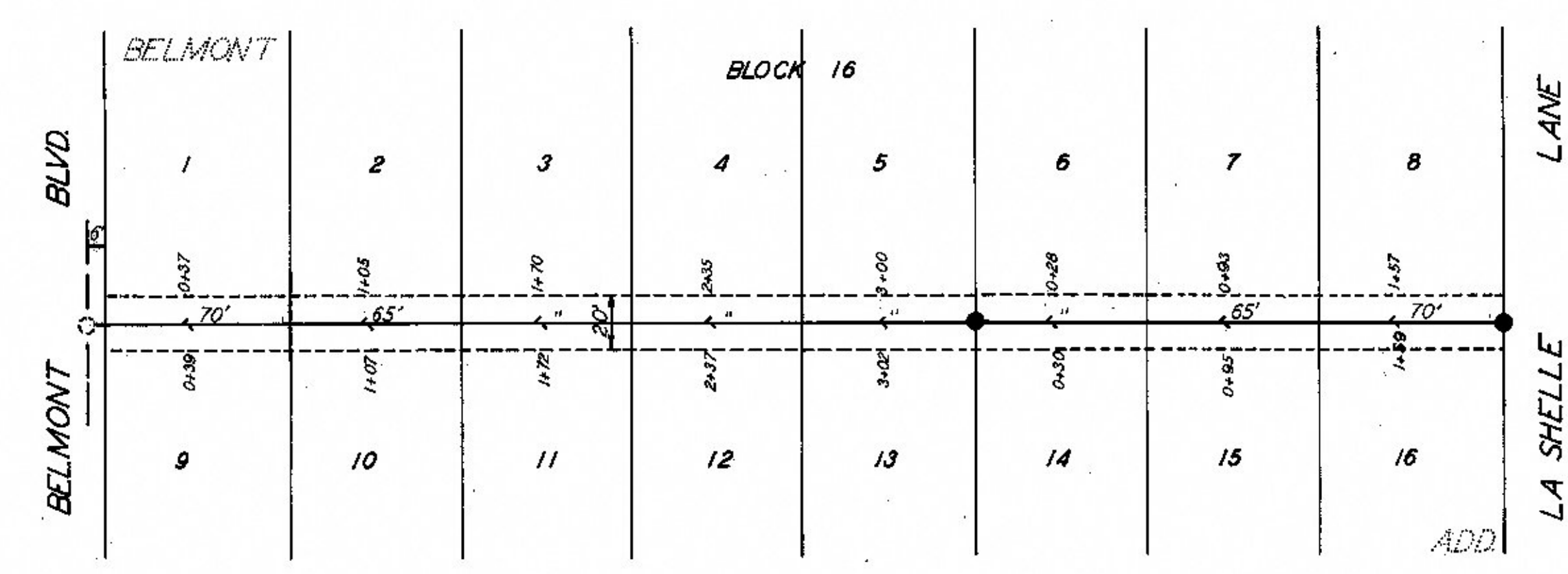
SAN SEWER KENSINGTON - EXIST. M.H. S. TO BELMONT



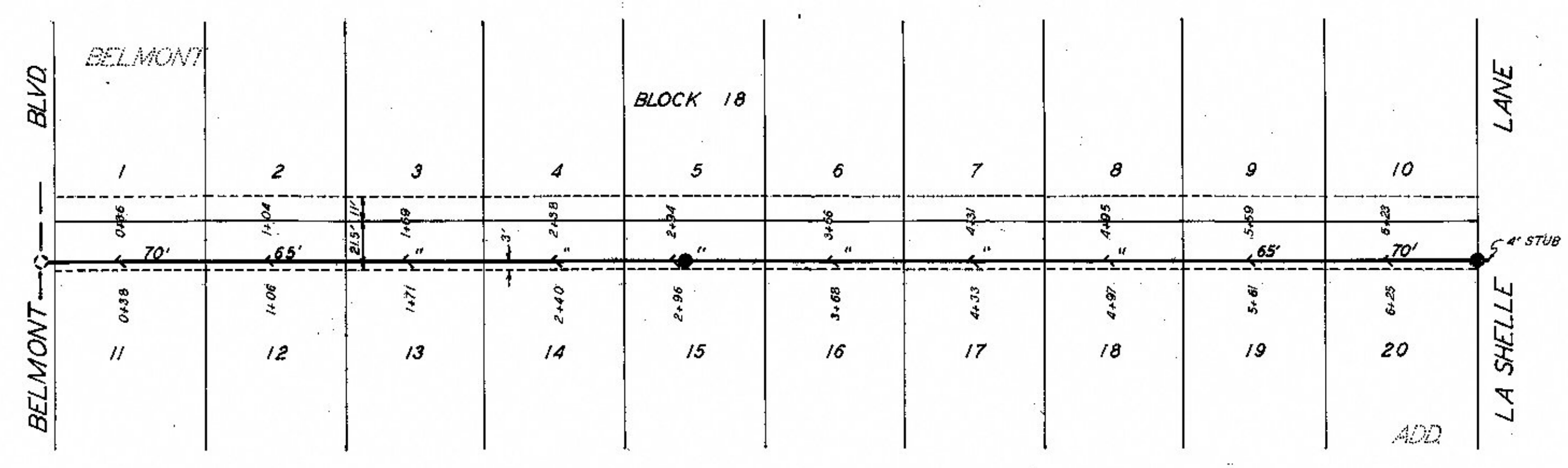
EXTEN. OF LAT. 375



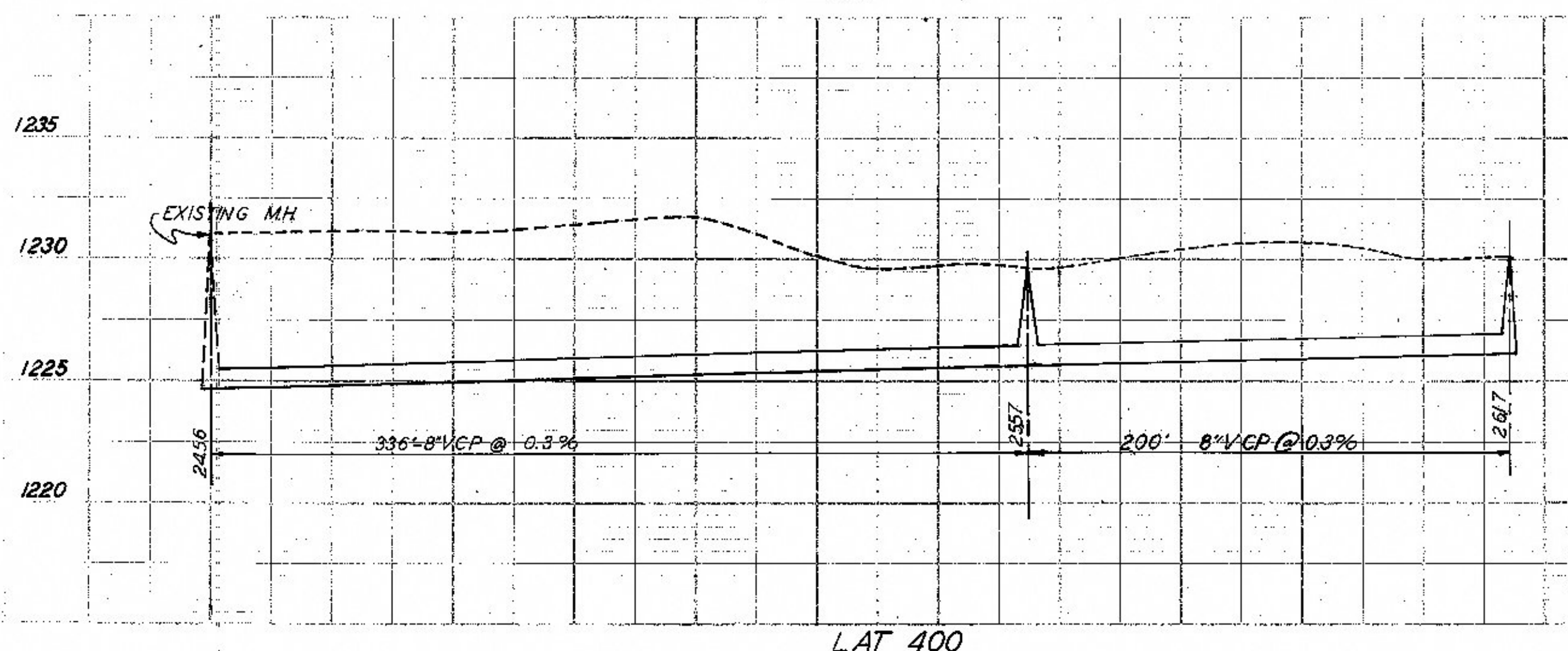
EXTEN. OF LAT. 374



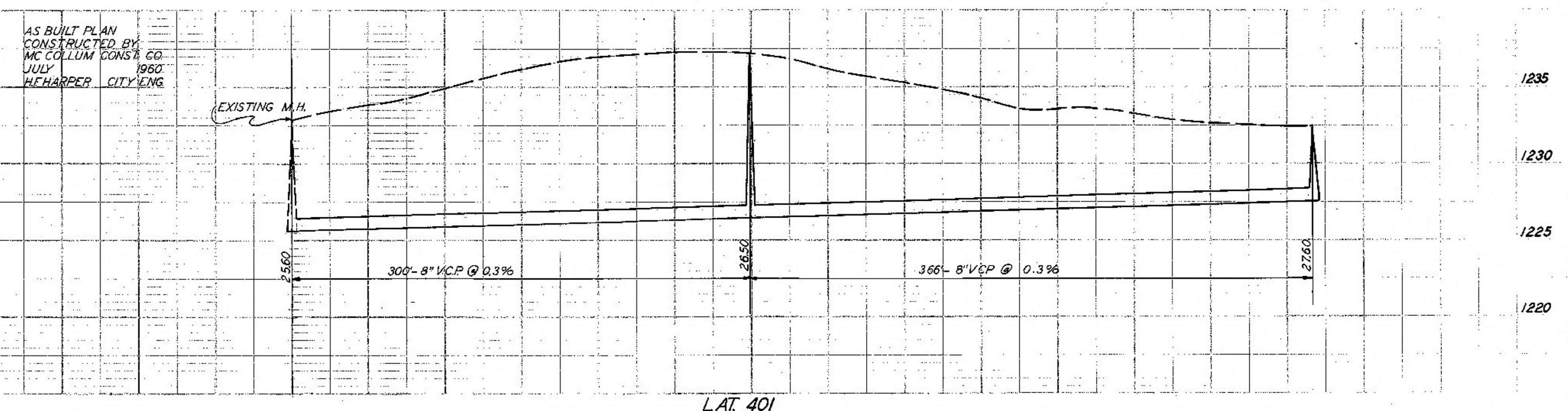
SAN SEWER RW E. OF WESLEY - BELMONT TO LA SUELLE



SAN SEWER RW E. OF KENSINGTON - BELMONT TO LA SUELLE



LAT 400



LAT 401

AS BUILT PLAN
CONSTRUCTED BY
MC COLLUM CONST. CO.
JULY
1960
H. HARPER CITY ENG.