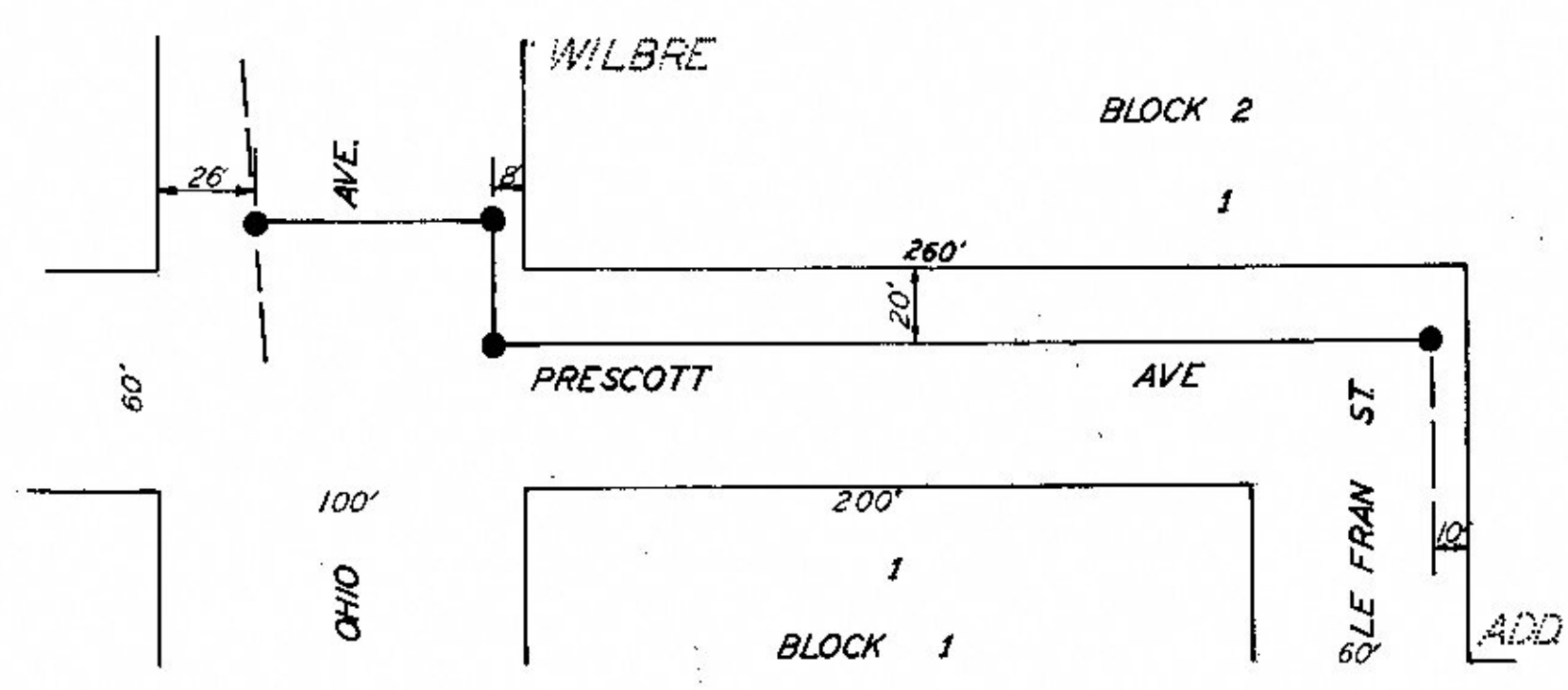
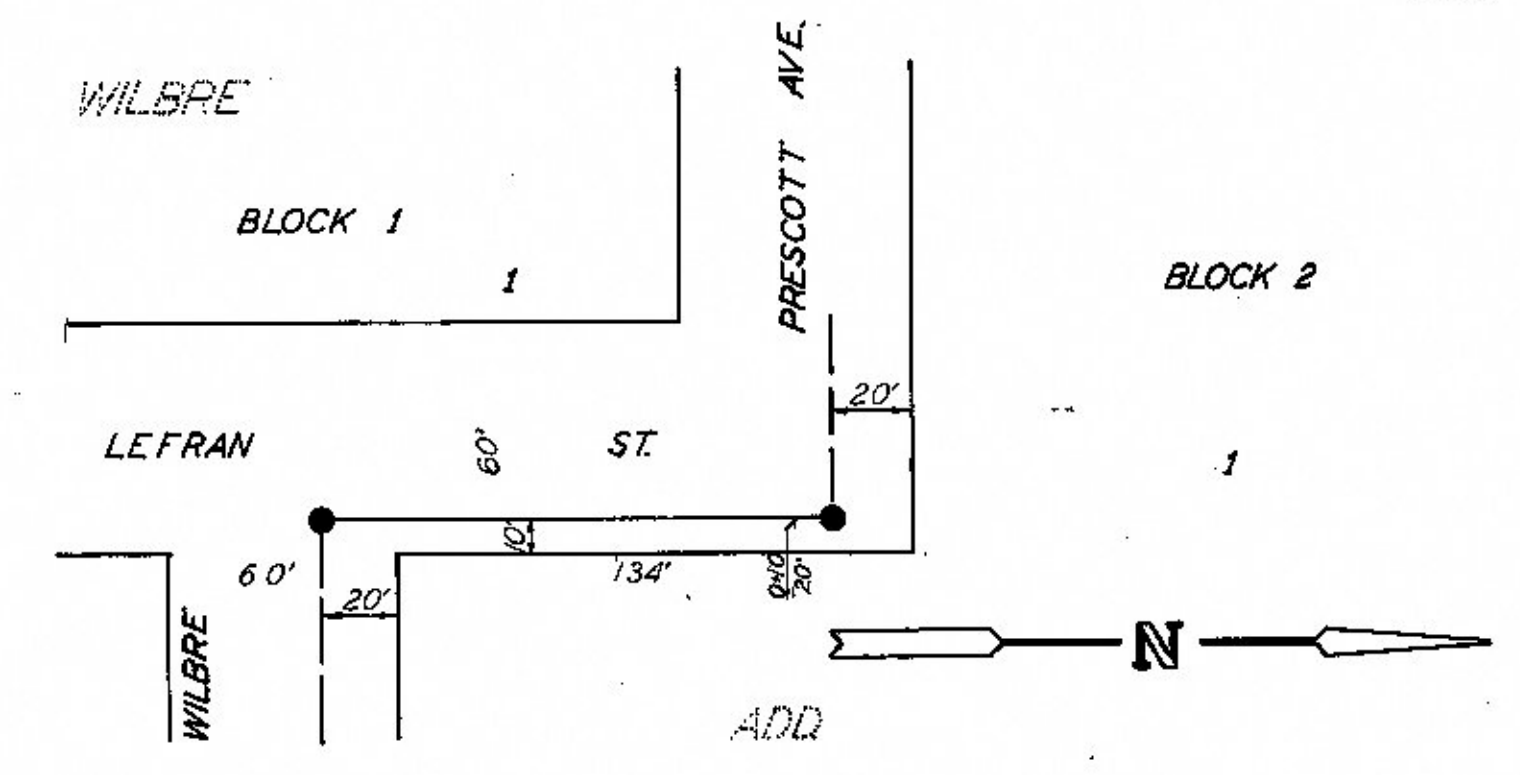


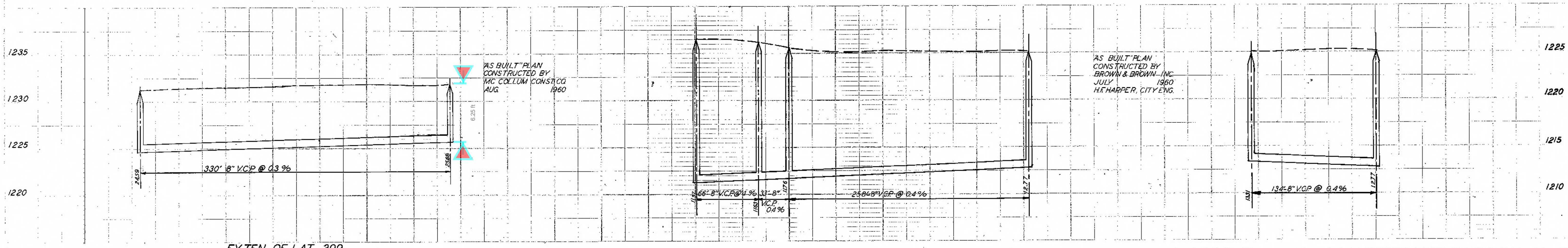
RAW E. OF EDWARD - EXIST. M.H. TO LA SHELLE



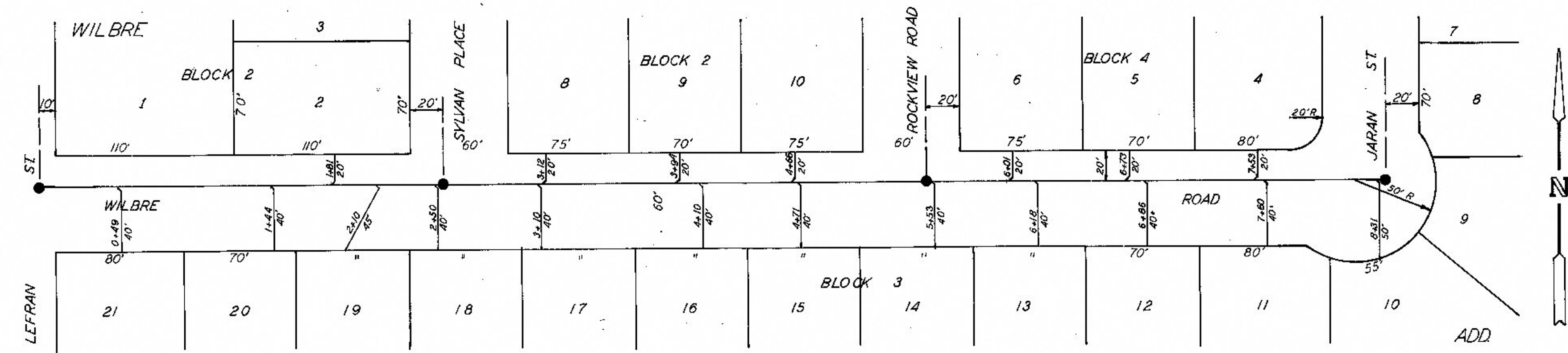
SAN SEWER - PRESCOTT - OHIO TO LE FRAN



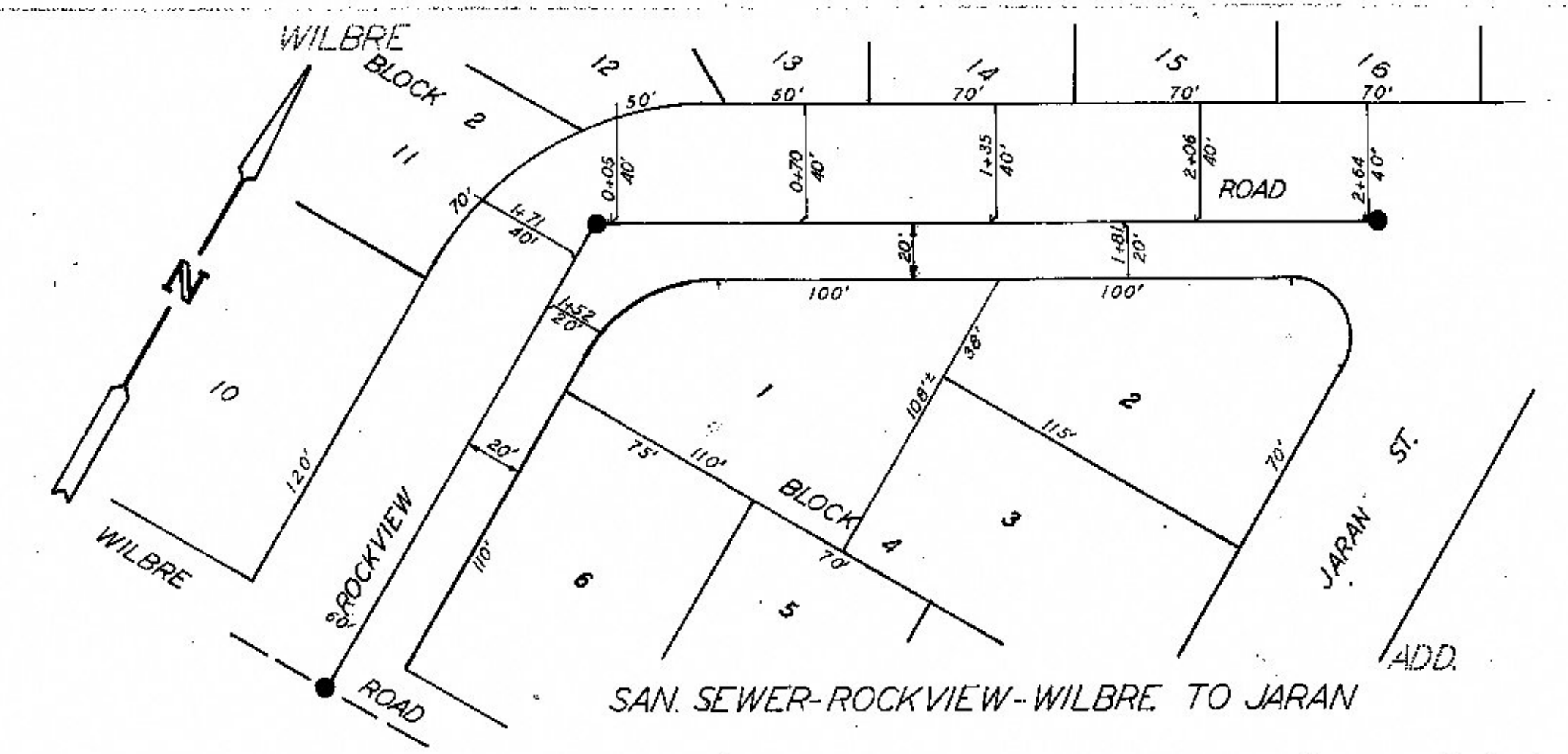
SAN. SEWER - LEFRAN - WILBRE TO PRESCOTT



EXTEN. OF LAT. 399



SAN. SEWER - WILBRE - LEFRAN TO JARAN



SAN. SEWER - ROCKVIEW - WILBRE TO JARAN

