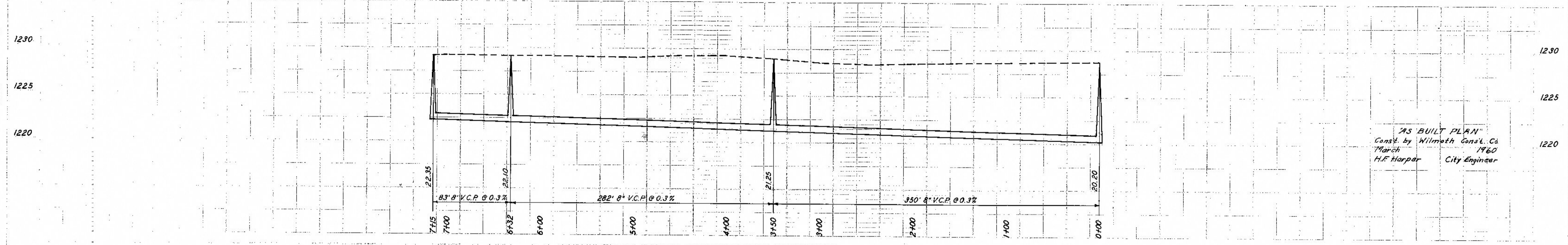
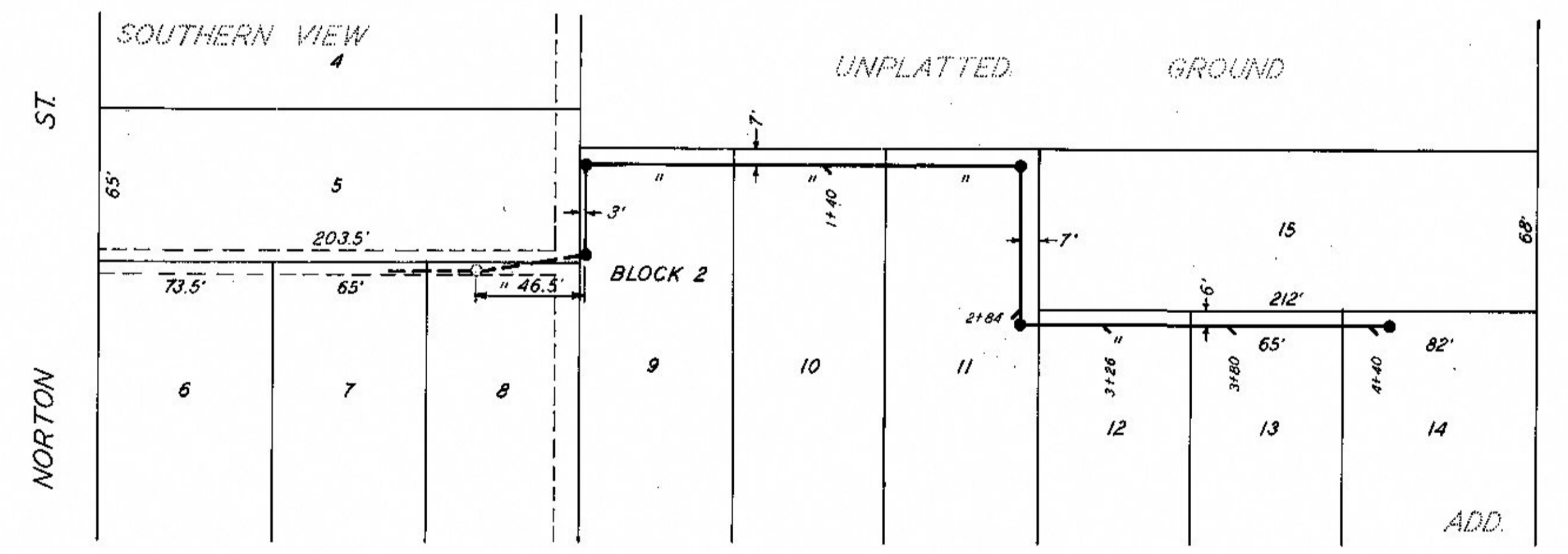


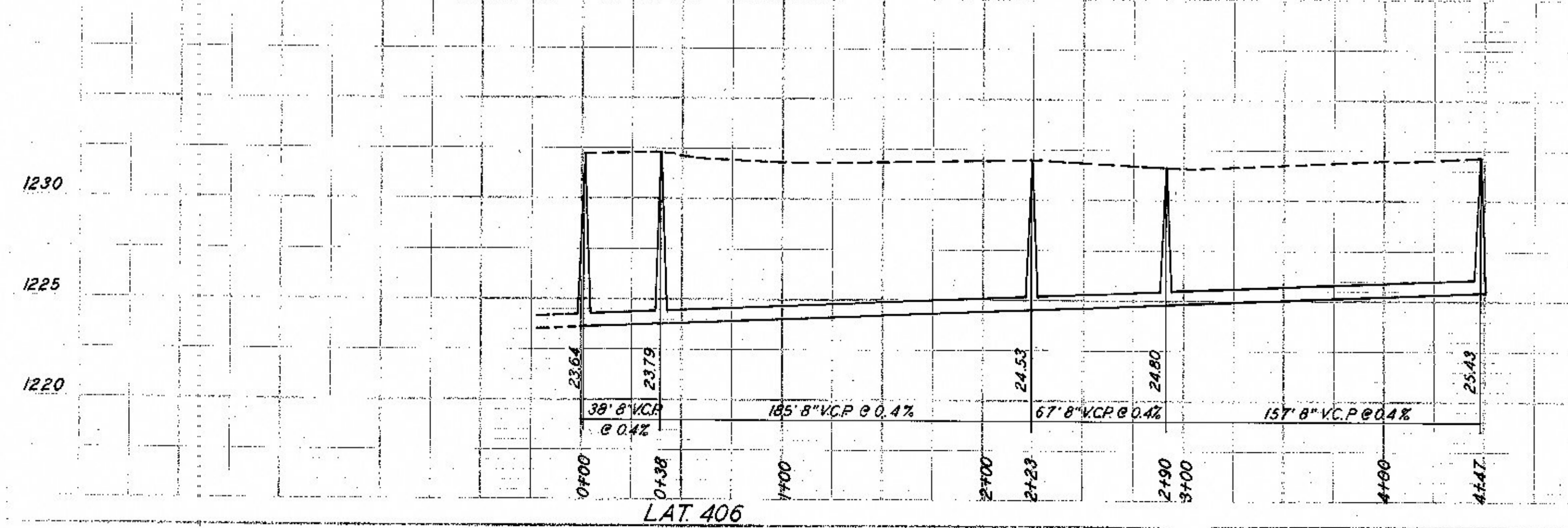
R/W N. OF WAYNE - R/W W. OF OHIO TO ROACH



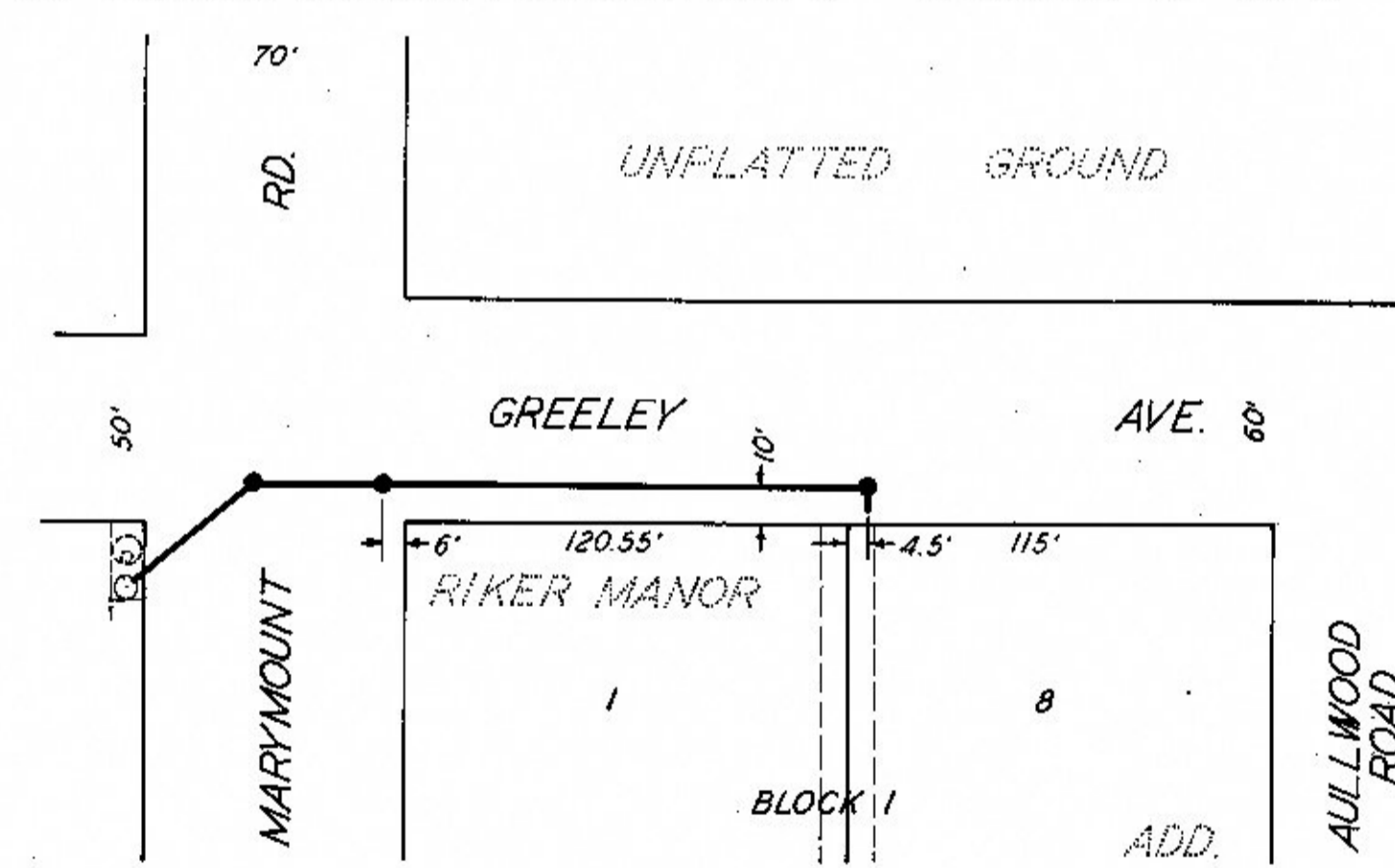
"AS BUILT PLAN"
Const. by Wilmoth Const. Co.
March 1960
H.F. Harper City Engineer



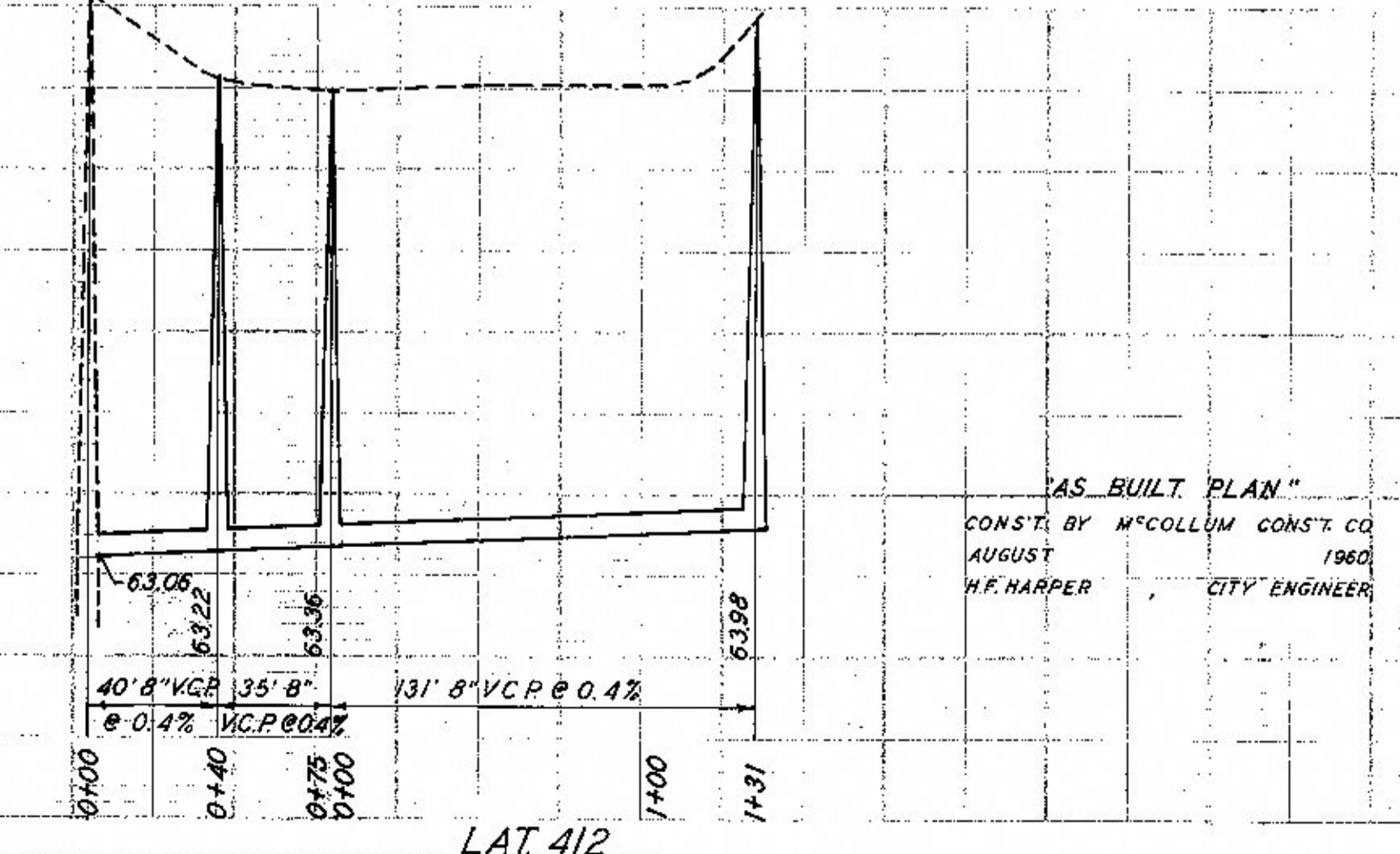
R/W N. OF MAX BETWEEN NORTON & ROACH



LAT 406

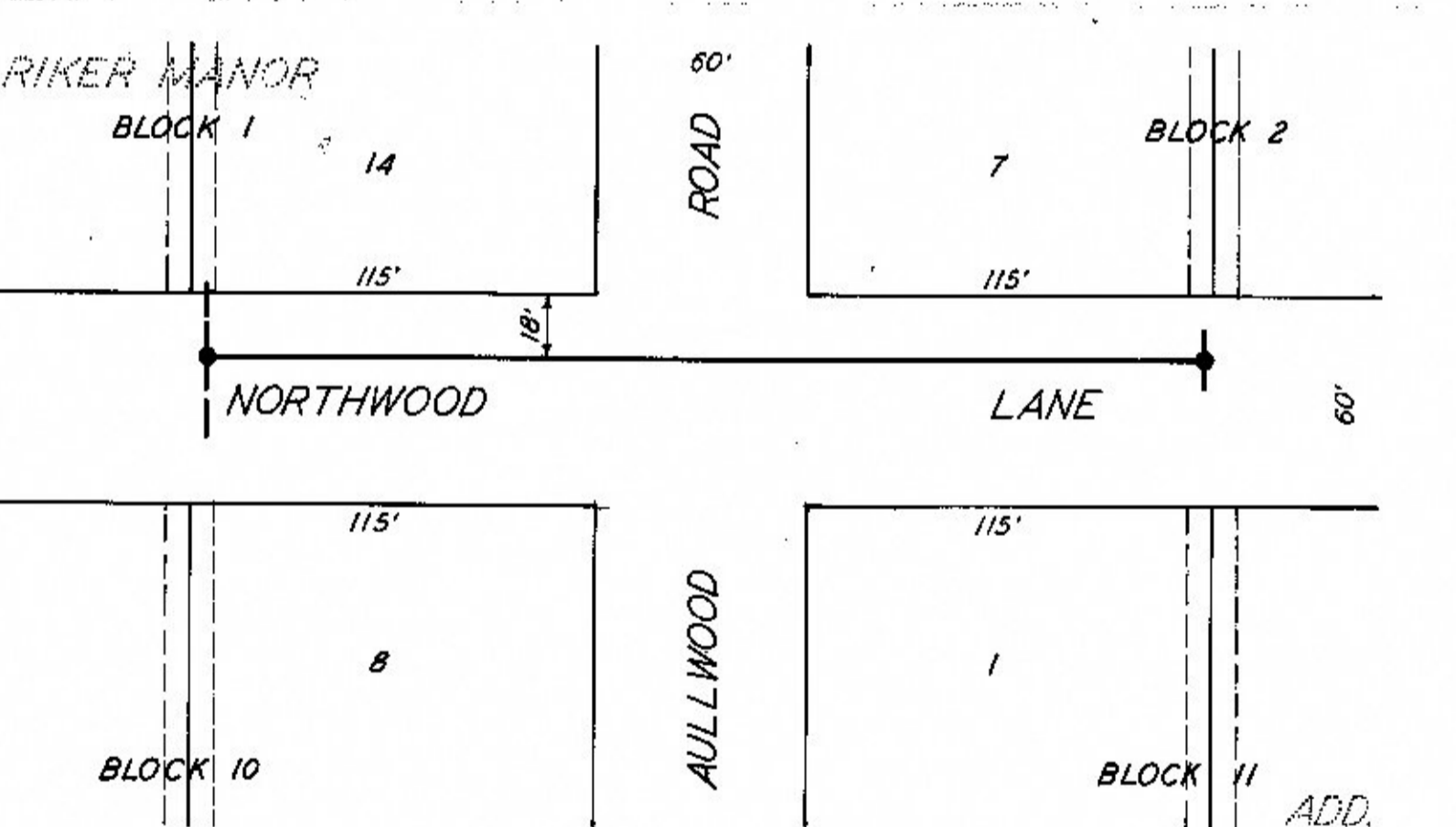


GREELEY - MARYMOUNT TO R/W E. OF MARYMOUNT

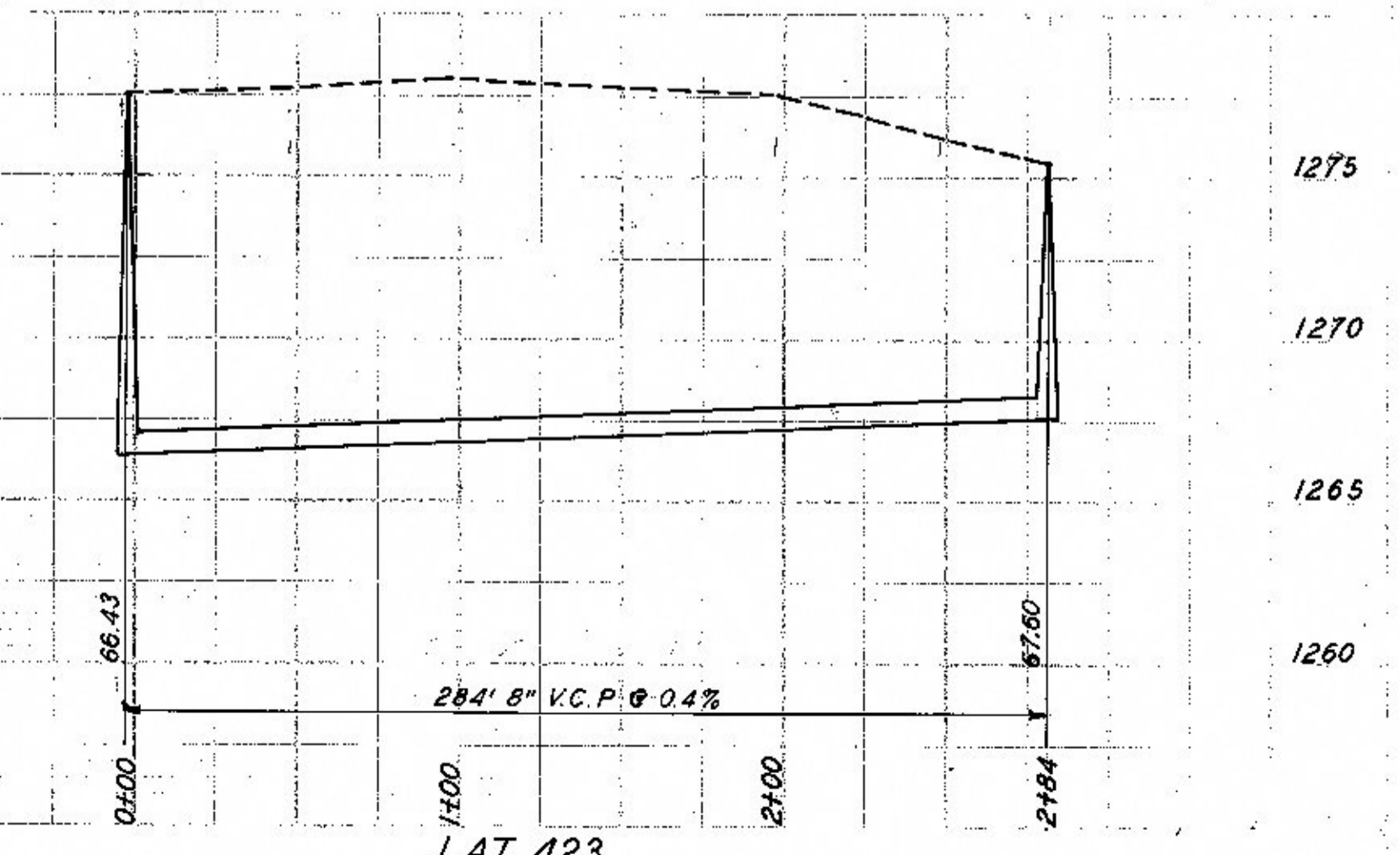


LAT 412

"AS BUILT PLAN"
CONST. BY McCOLLUM CONST. CO.
AUGUST 1960
H.F. HARPER CITY ENGINEER



NORTHWOOD - R/W E. OF MARYMOUNT TO R/W E. OF AULLWOOD



LAT 423