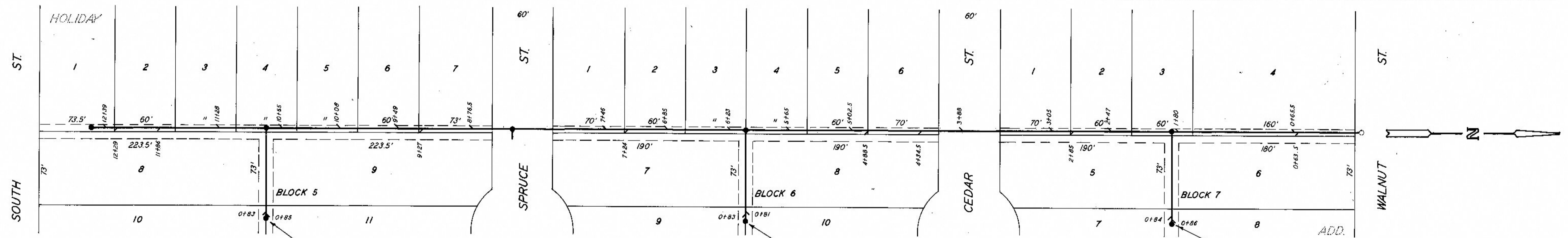
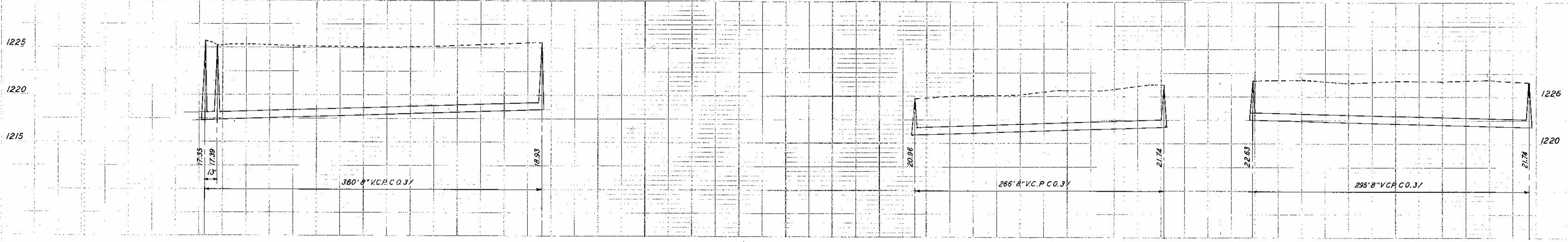
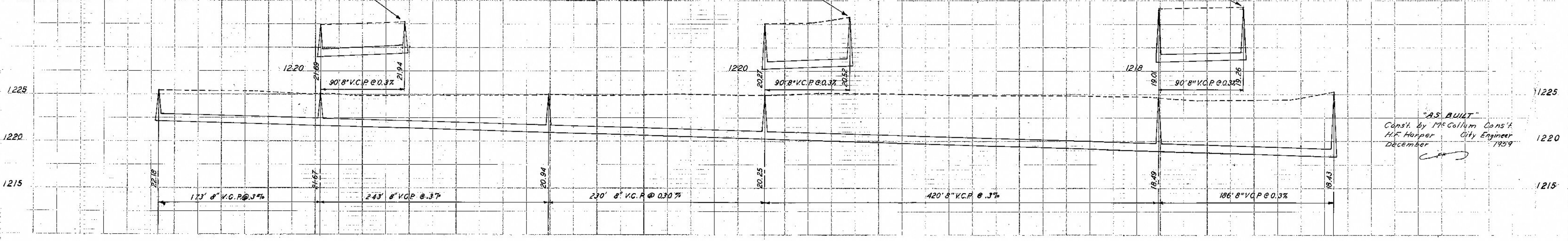


SANITARY SEWER MAIN "AJ" LOT 29 BLOCK 4 TO R/W EAST OF CHICAGO

SANITARY SEWER LAT. 391 CLARK-R/W.E. OF CHICAGO TO LOT 8 BLK. 6



SANITARY SEWER- MAIN "AJ" FROM WALNUT TO LOT 1 BLOK 5



"AS BUILT"
 Const. by McCallum Const.
 H.F. Harper City Engineer
 December 1959