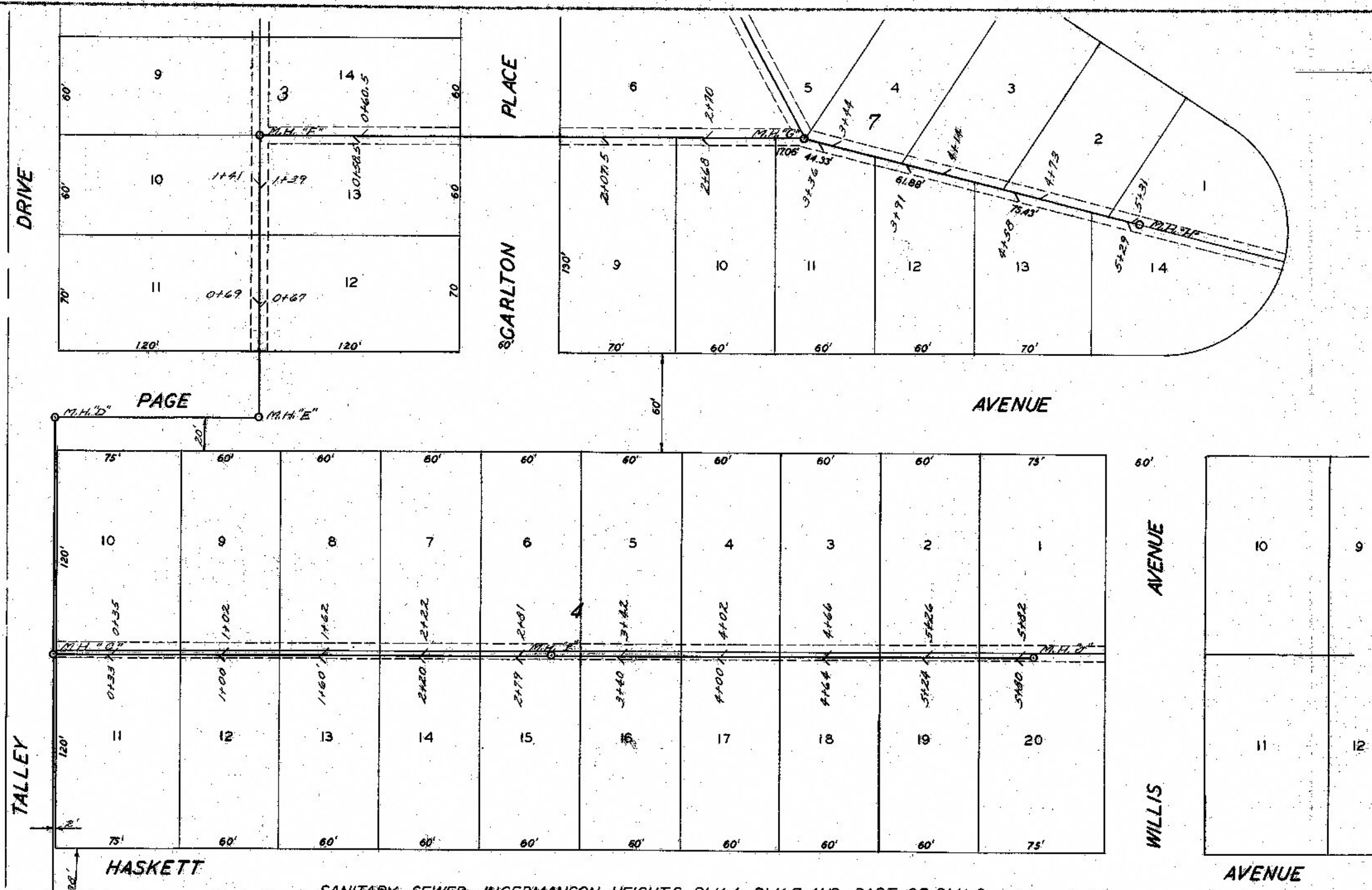
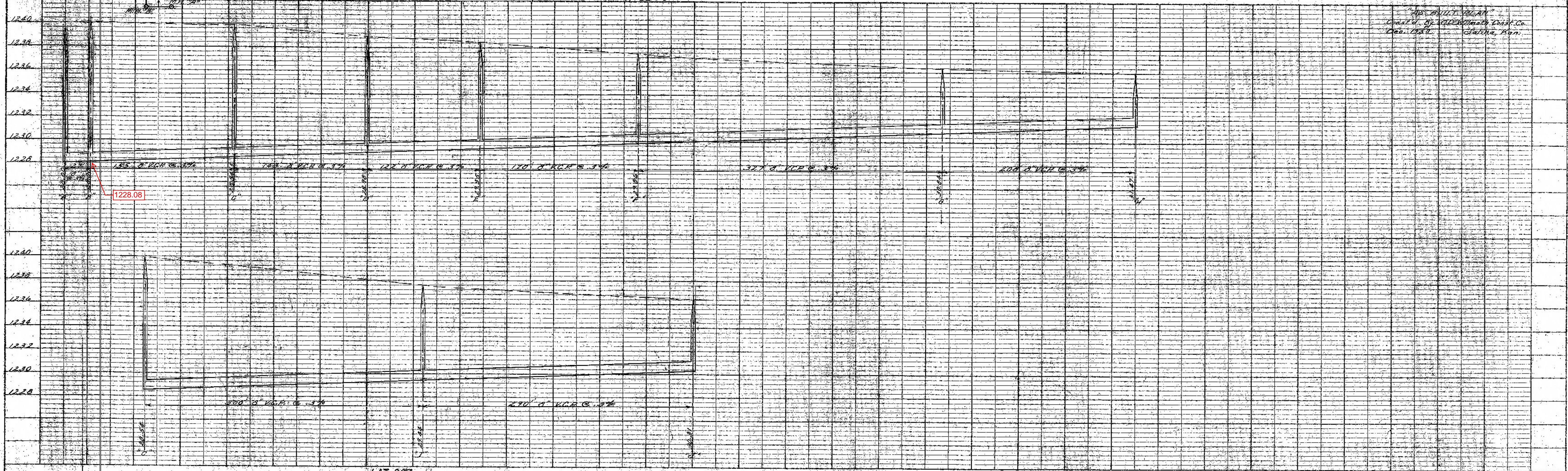


299



SANITARY SEWER - INGERMANSON HEIGHTS BLK 4, BLK 7 AND PART OF BLK 3



"AS BUILT" PLAN
 Drawn by J.P. O'Donnell, Const. Co.
 Dec. 1937. Galena, Ill.

LAT 367

PLAN

DATE	
BY	
SURVEYED	
NOTE BOOK	
ALIGNMENT CHECKED	
RT. OF WAY CHECKED	
NO.	

PROFILE

DATE	
BY	
SURVEYED	
NOTES CHECKED	
STRUCTURE NOTATIONS CHKD.	
NO.	