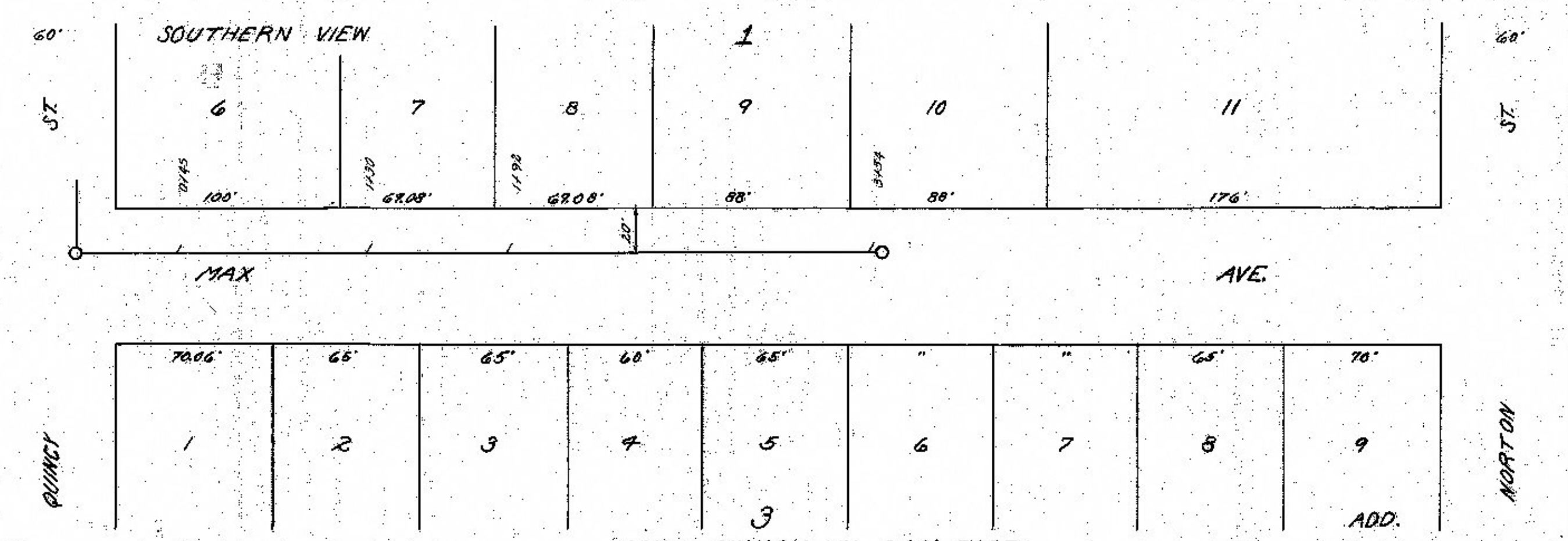
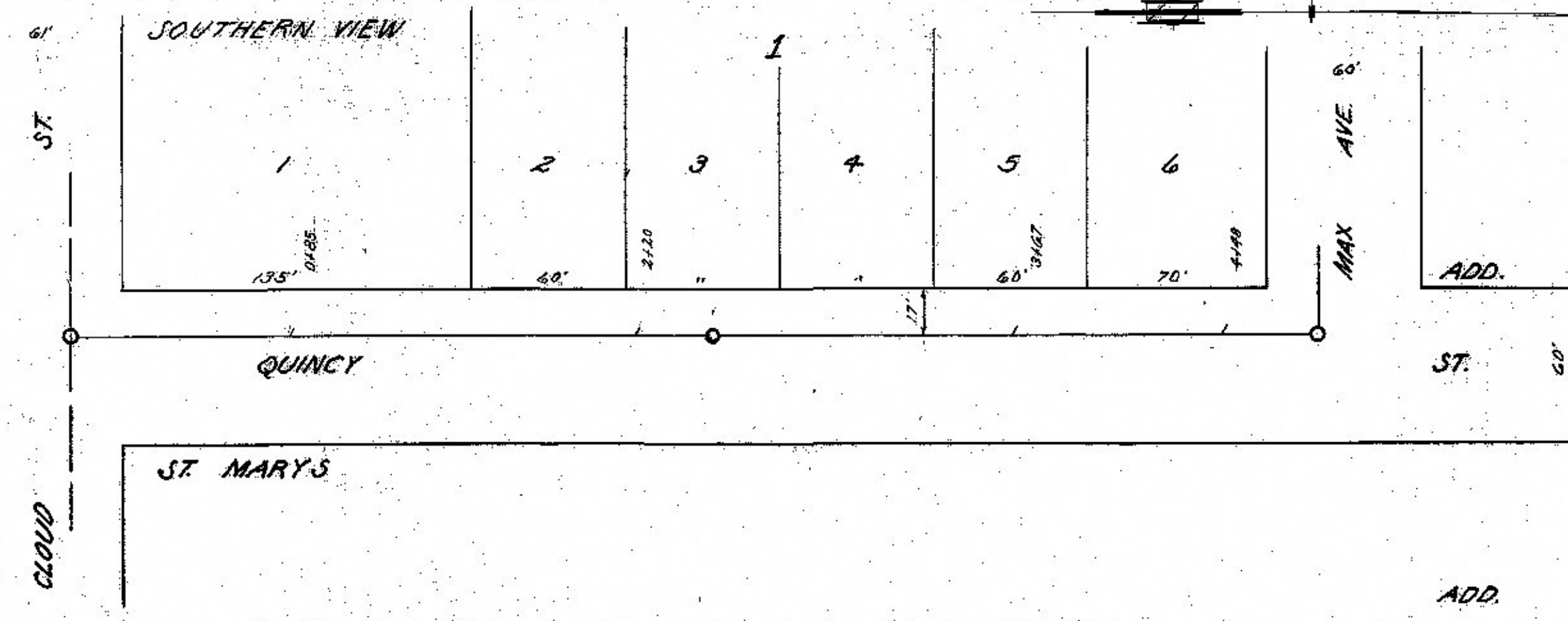


277

PLAN
 SURVEYED...
 PLOTTED...
 NOTE BOOK...
 NO.

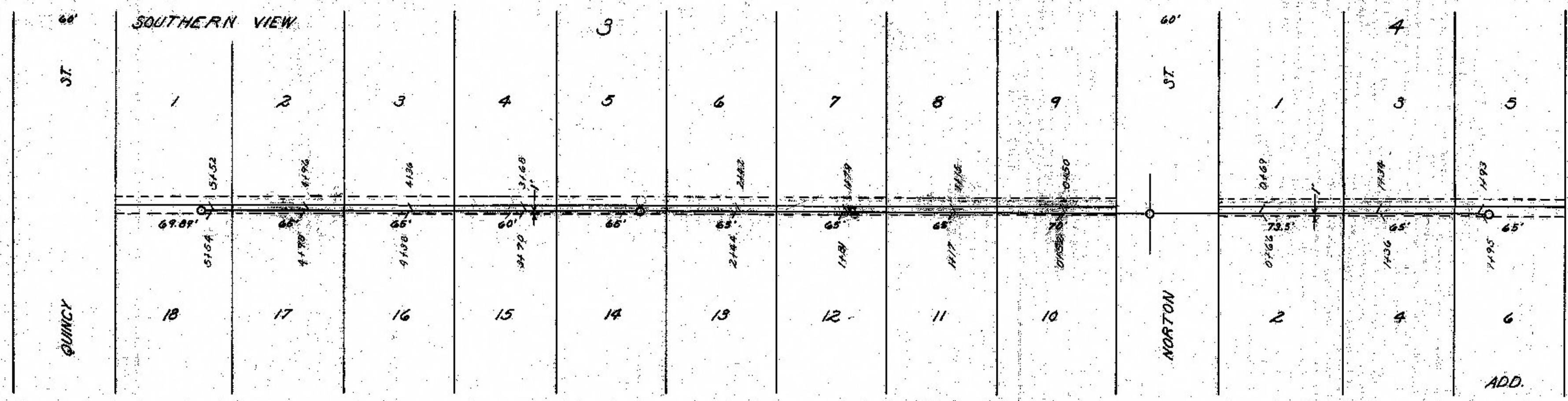
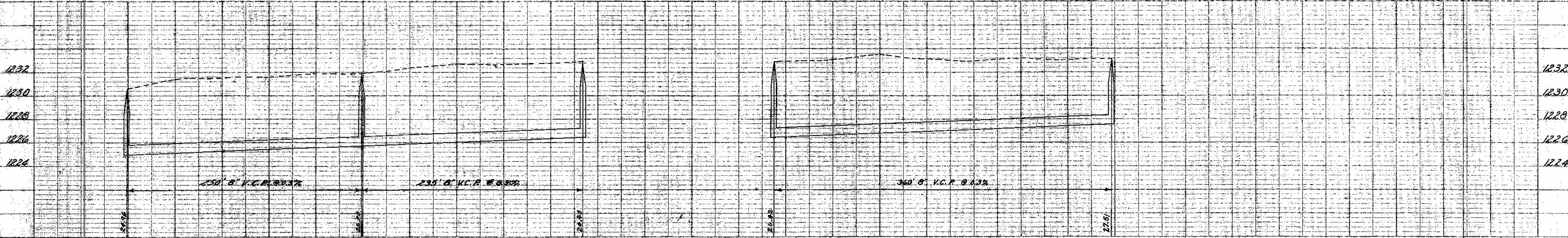
PROFILE
 SURVEYED...
 PLOTTED...
 NOTE BOOK...
 NO.



QUINCY - CLOUD TO MAX

LAT. 332

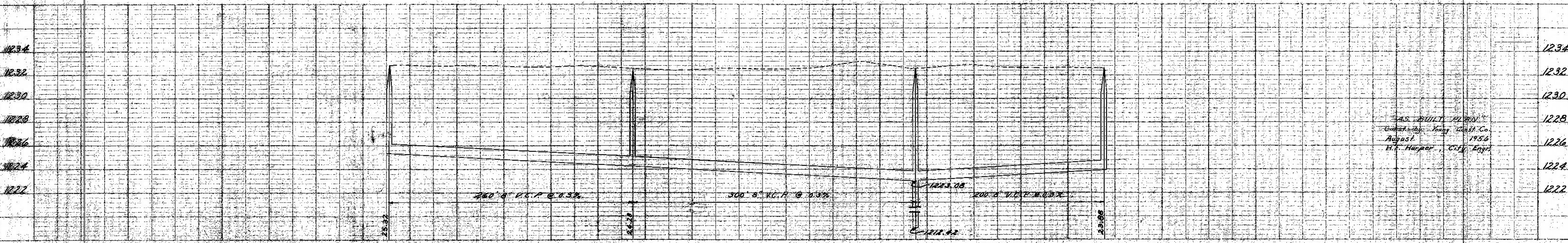
MAX - QUINCY TO 360' EAST



LAT. 336

R/W N. OF RALPH FROM NORTON 560' W. & 200' E.

LAT. 335



AS BUILT PLAN
 Goshen Co. Young Const. Co.
 August 1956
 H. T. Harper, C.E., Eng.

OK