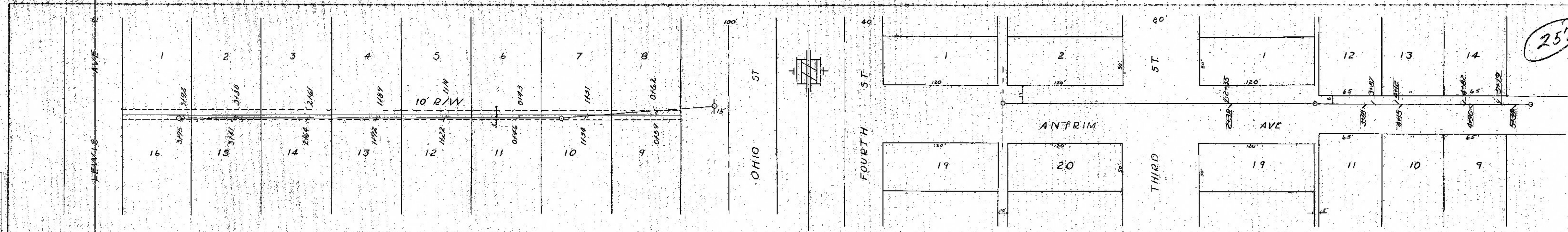
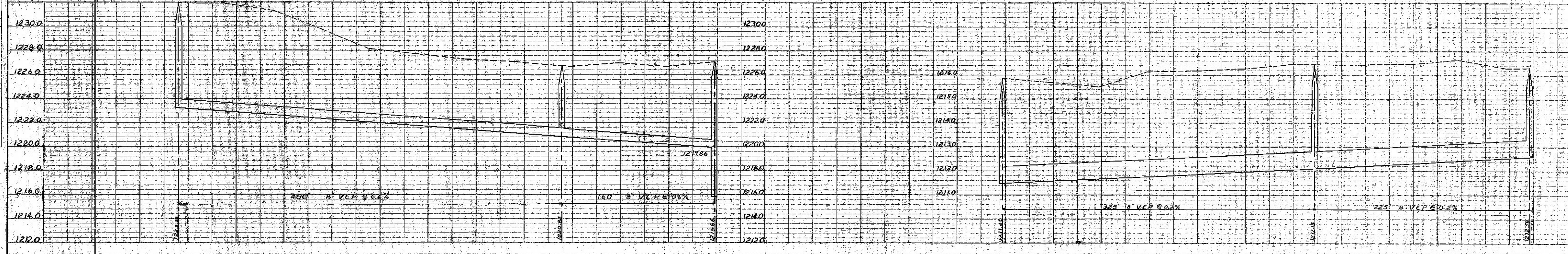


257



R/W N. OF BELoit FROM LEWIS TO OHIO  
LAT 316

LAT 318



PLAN SURVEYED BY DATE  
CHECKED BY  
NOTE BOOK NO.  
FLOTTED BY  
RT. OF WAY CHECKED BY

PROFILE SURVEYED BY DATE  
CHECKED BY  
NOTE BOOK NO.  
STRUCTURE NOTATIONS CHECKED BY