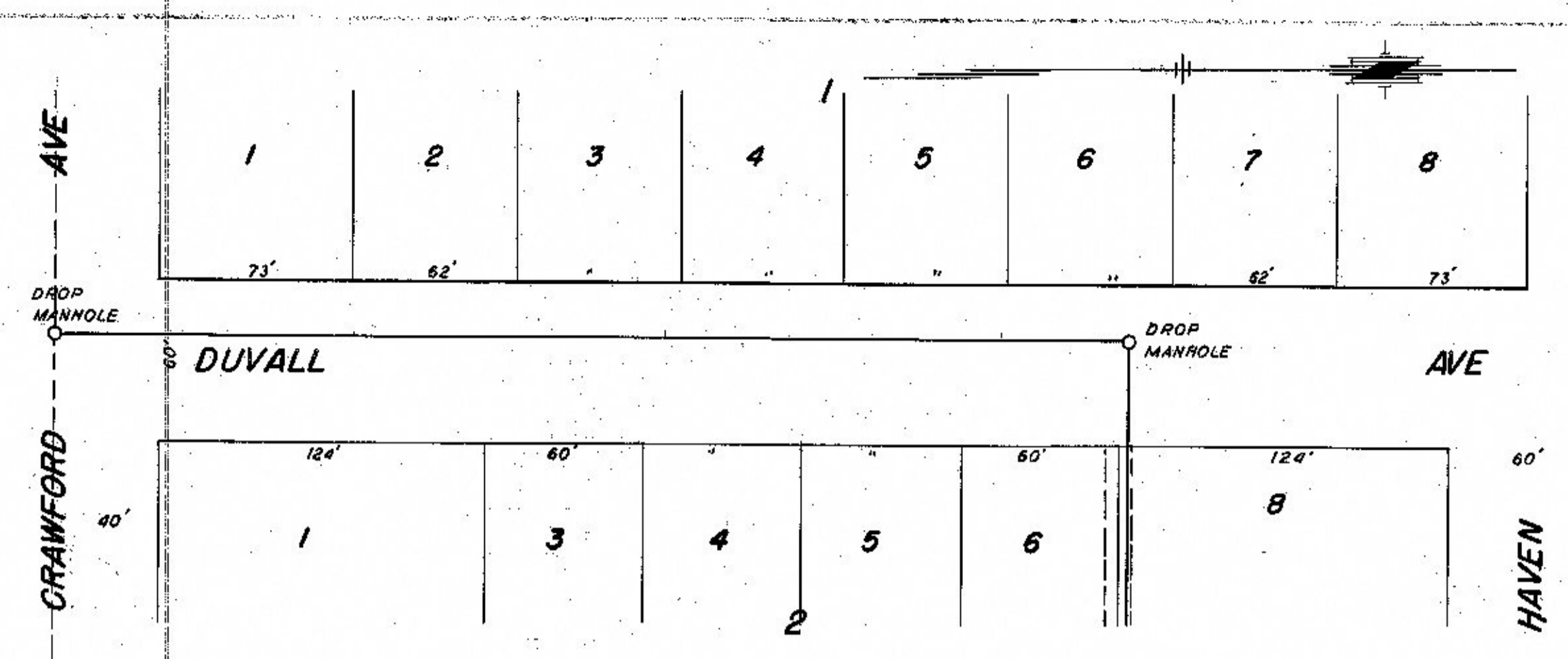
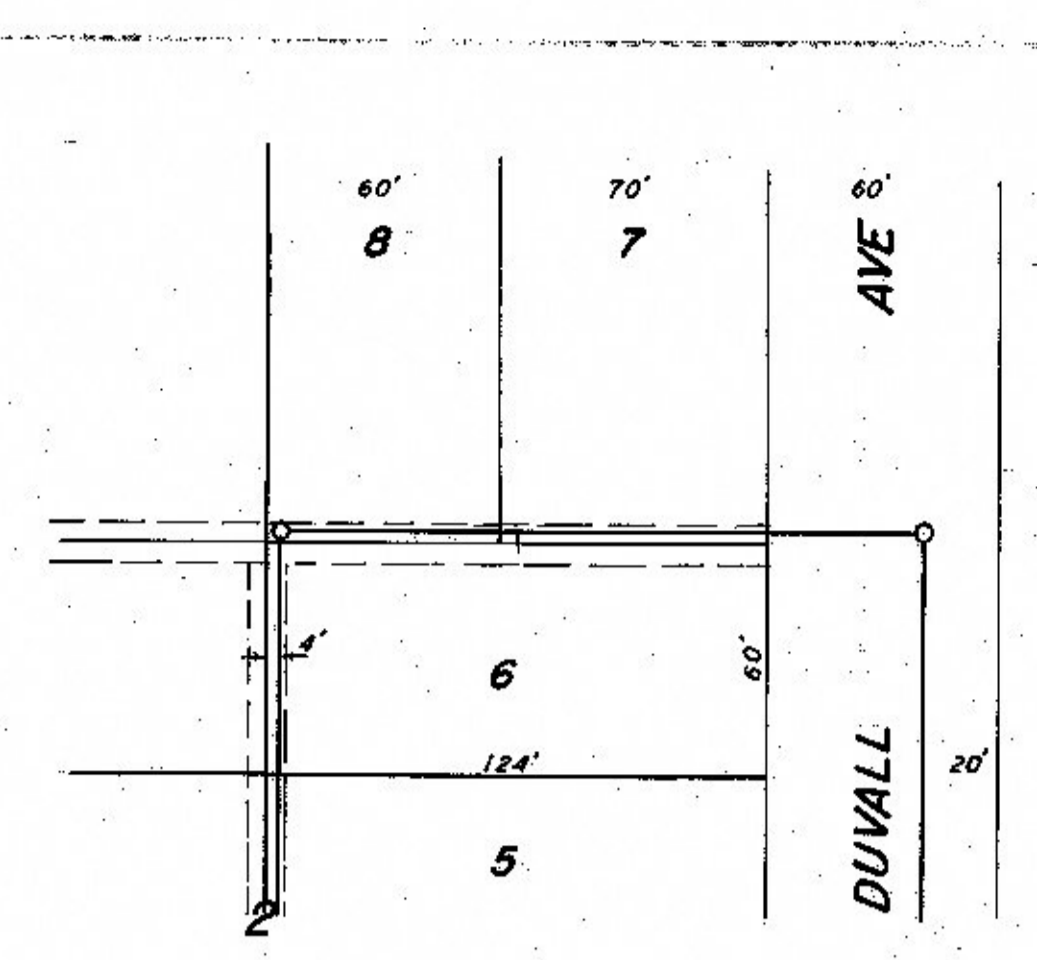


PLAN
 SURVEYED BY
 ALBERT J. HAYES
 1954
 17' 0" W.C.P. @ 2.4%

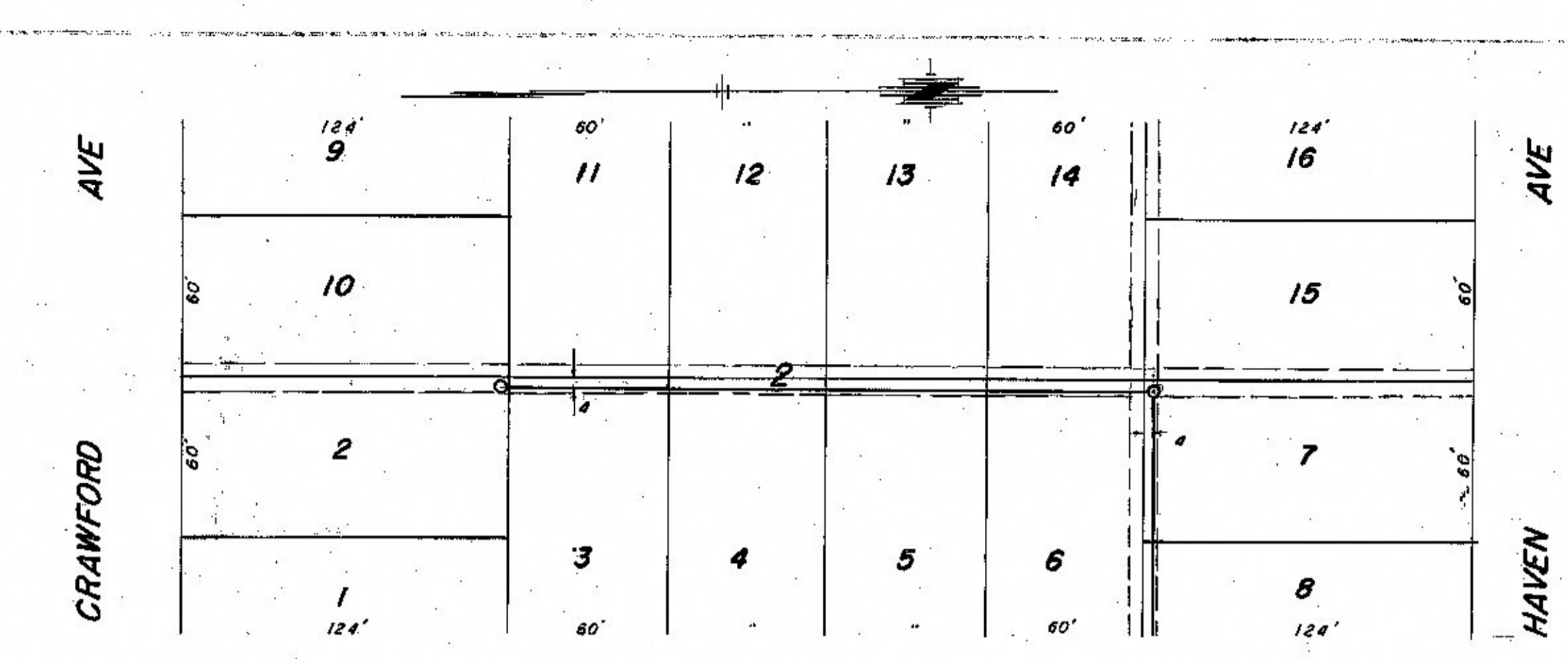
PROFILE
 SURVEYED BY
 ALBERT J. HAYES
 1954
 17' 0" W.C.P. @ 2.4%



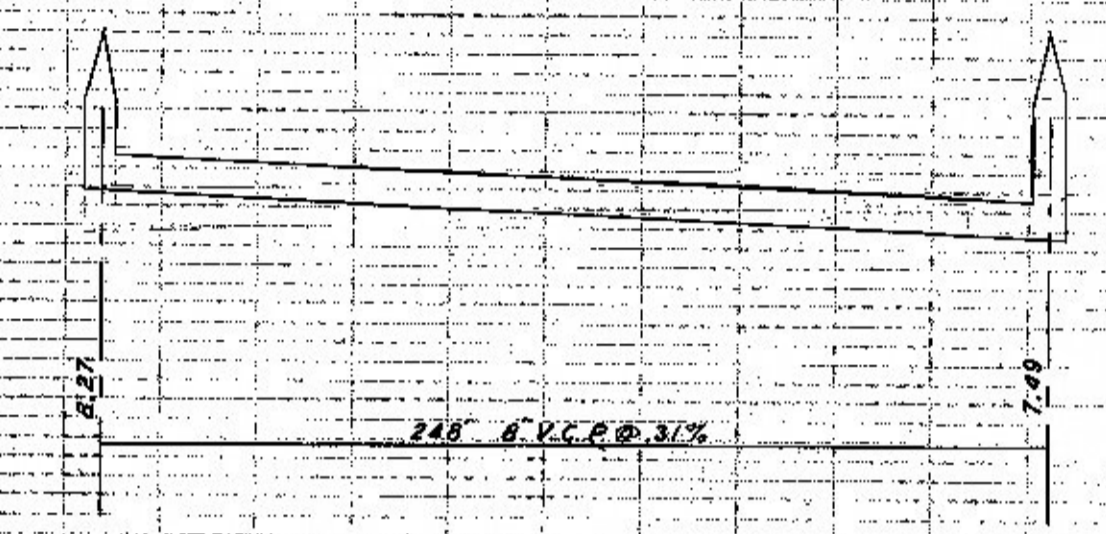
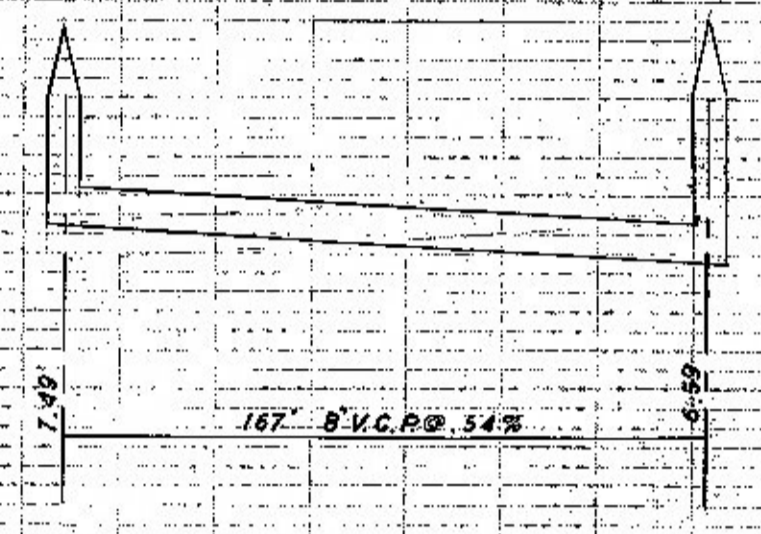
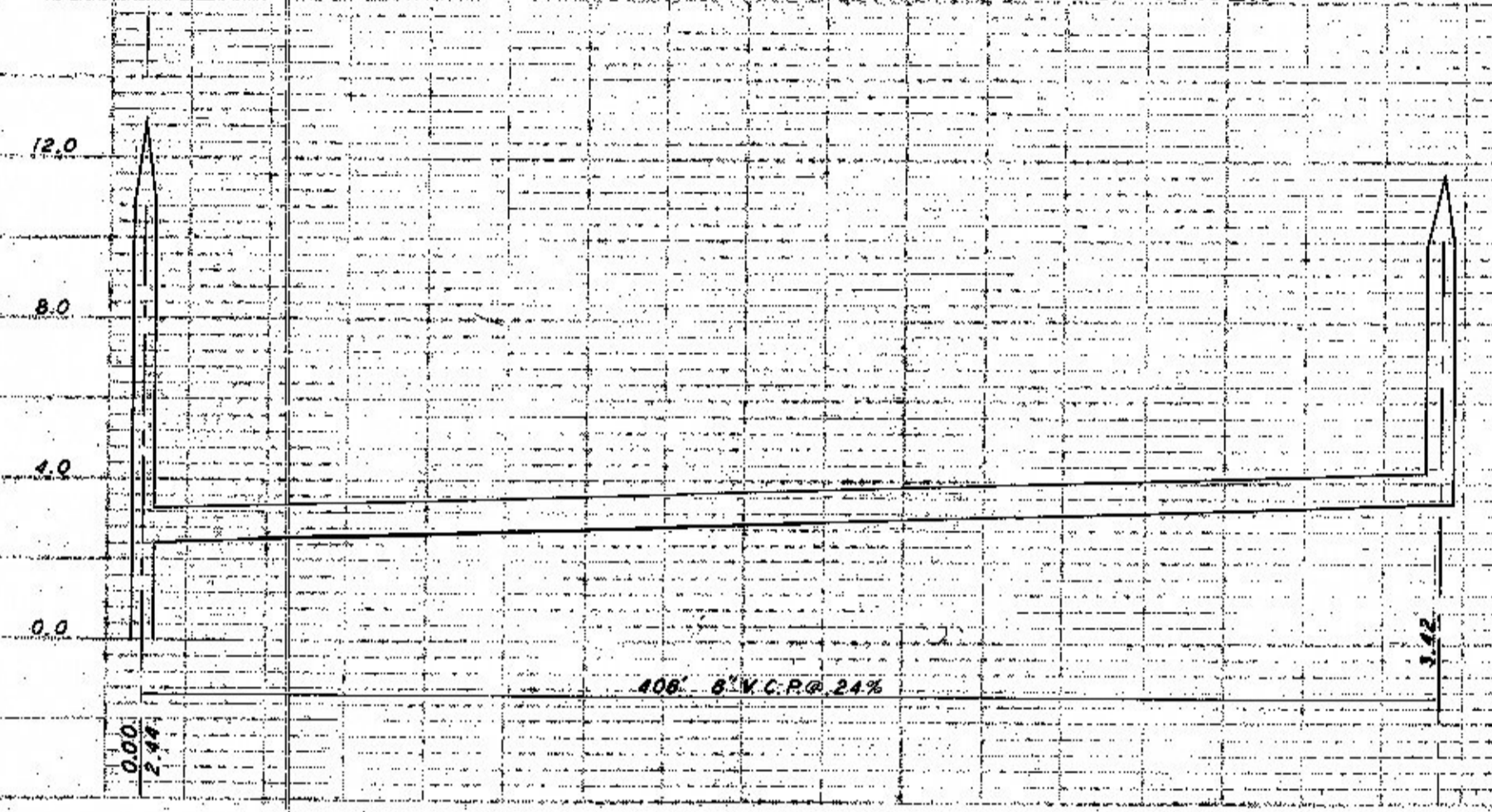
DUVAL - CRAWFORD TO HAVEN



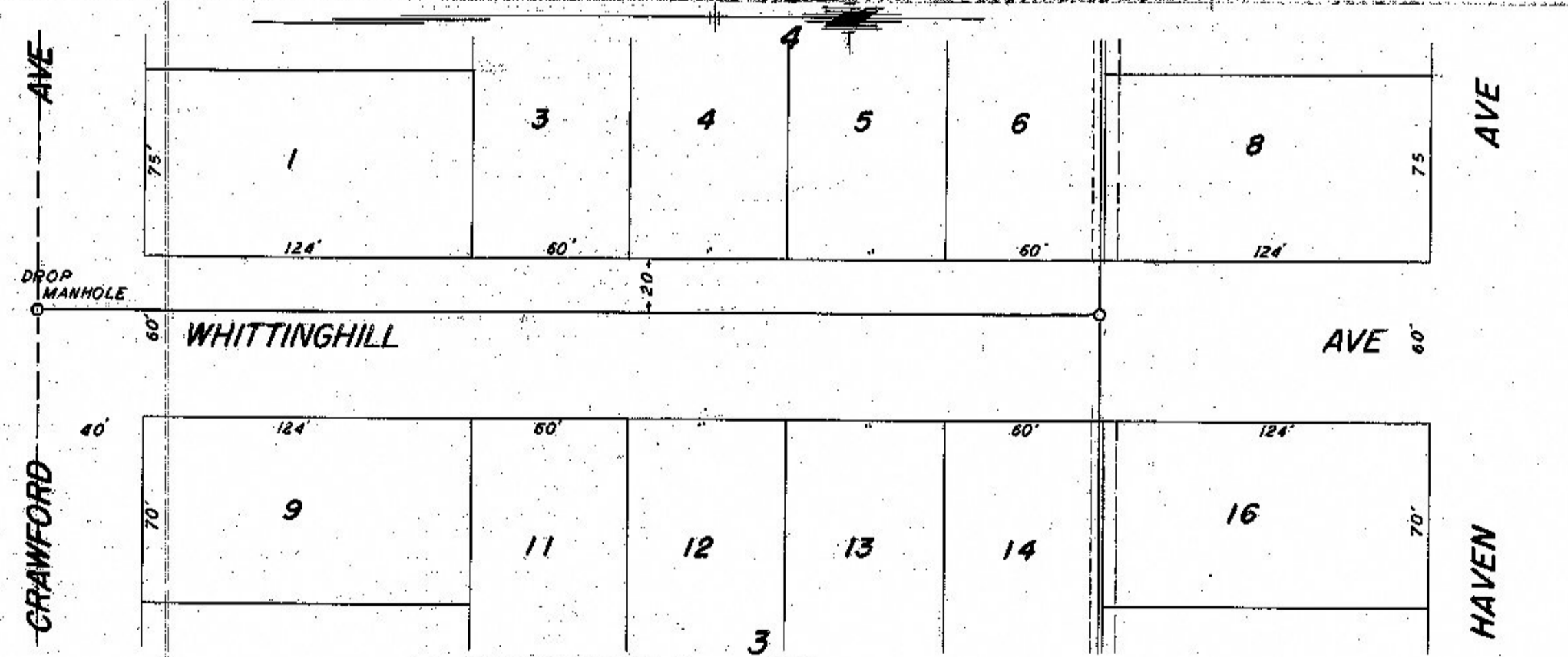
R/W S. HAVEN DUVAL TO STEAHLIN



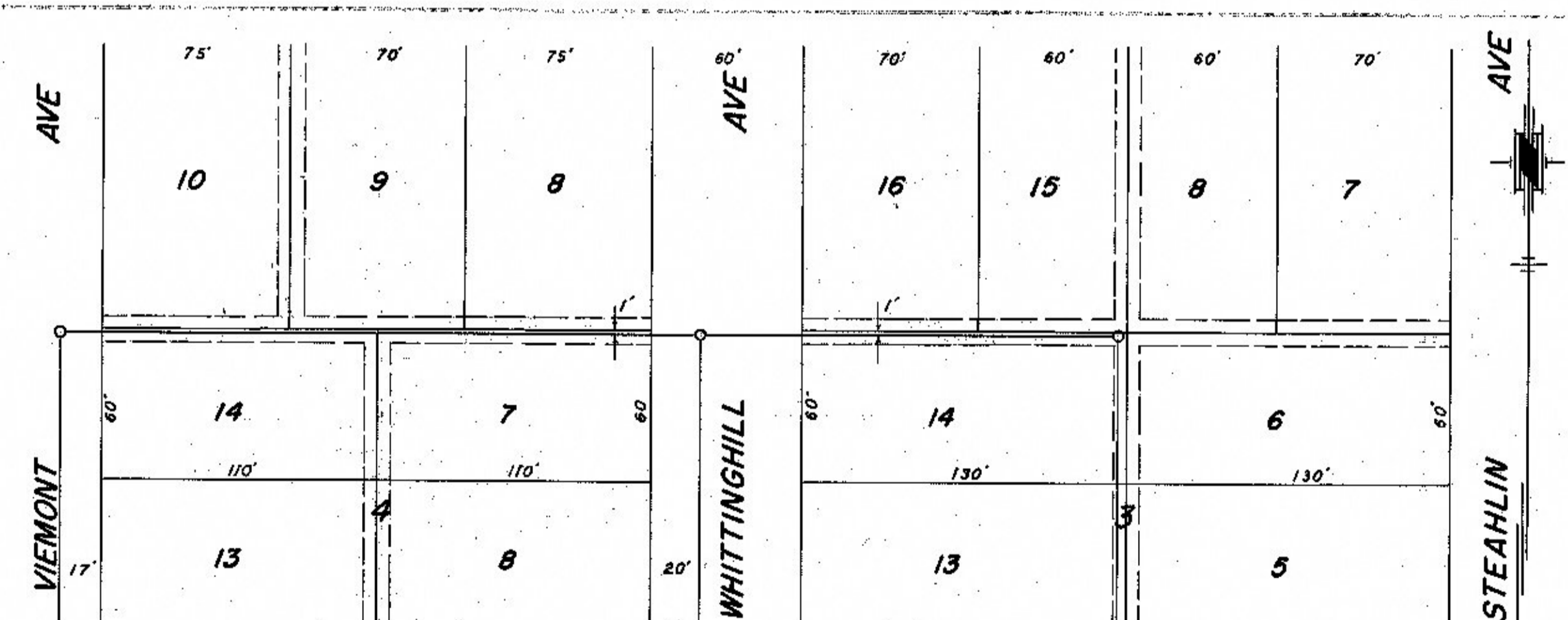
R/W W DUVAL CRAWFORD TO HAVEN



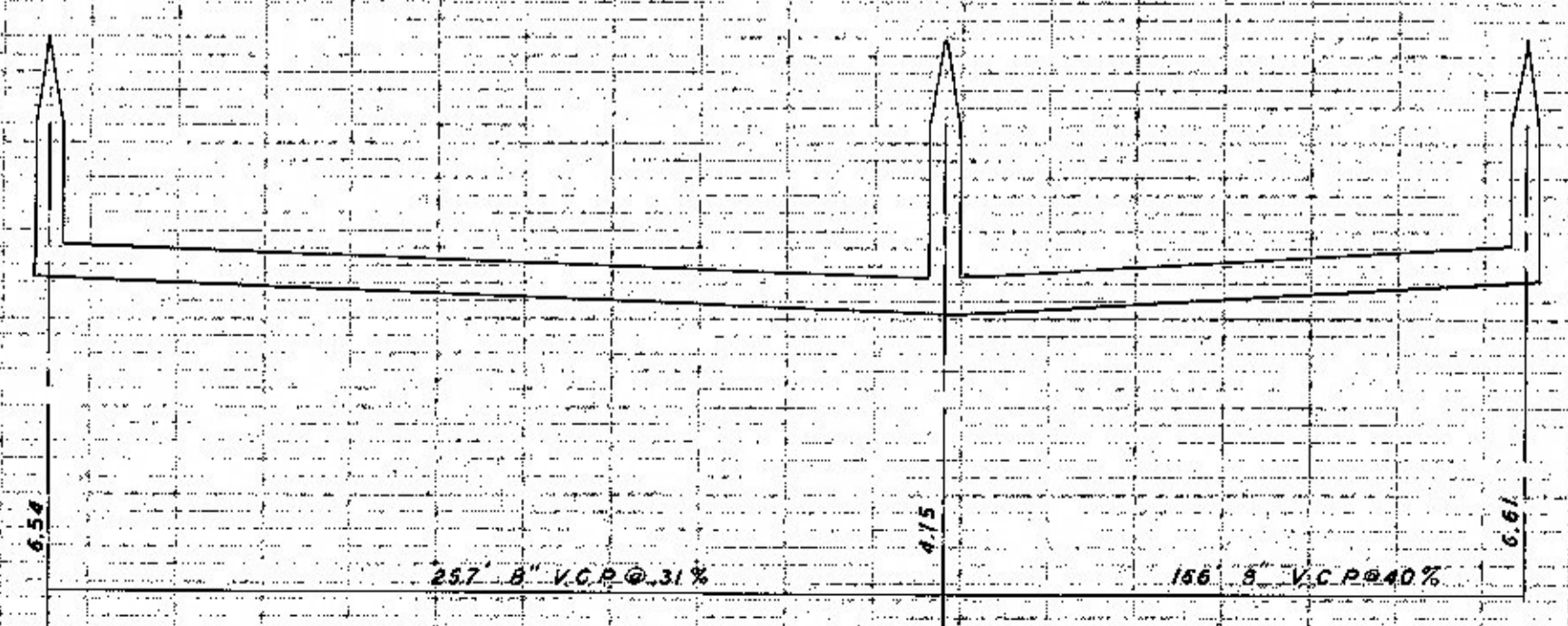
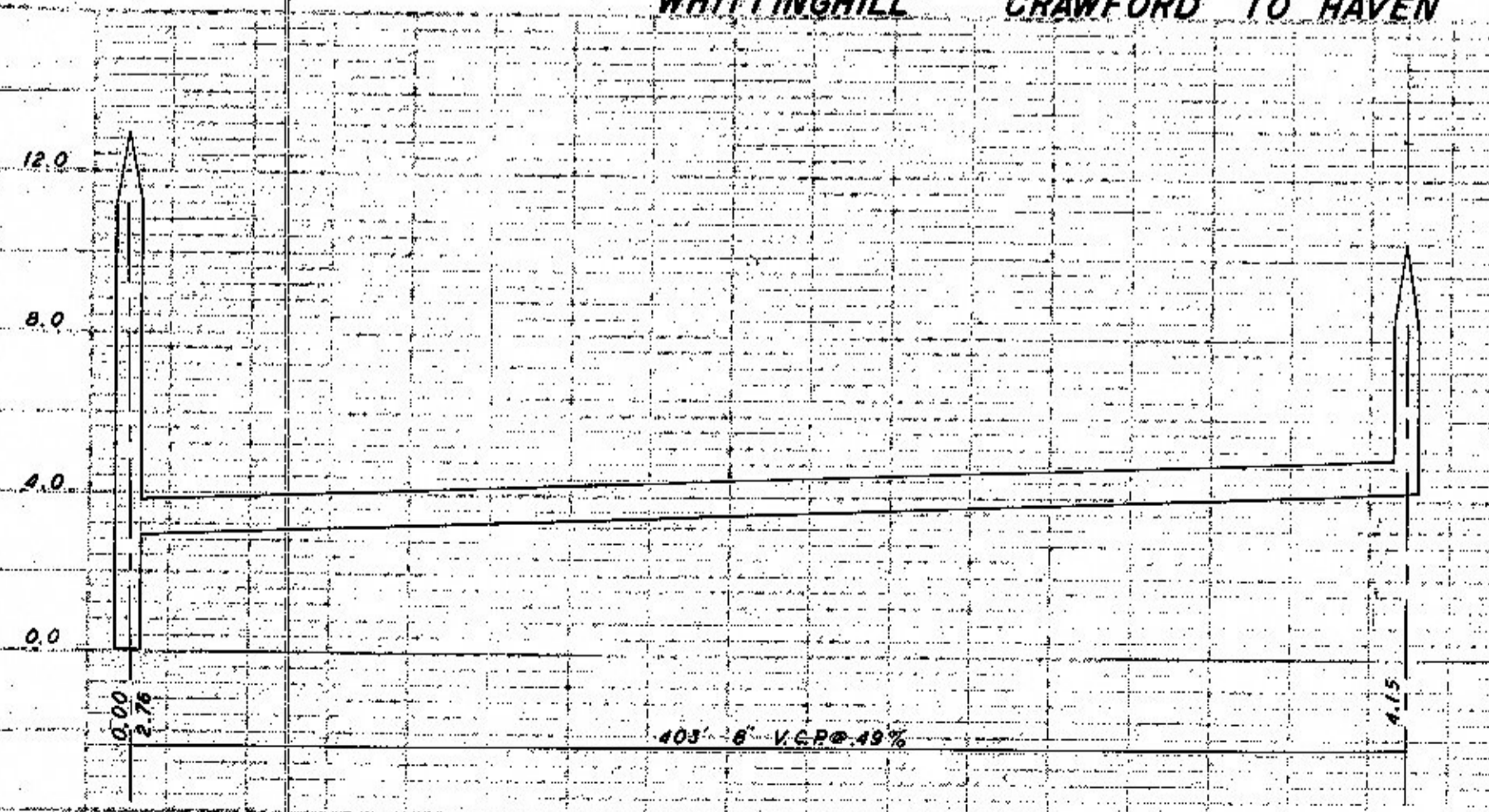
SANITARY SEWER
 BLOCKS 1 & 2
 EISENHOWER ADD.
 CONST. - MAY, 1954
 MICHAELSON CONST. CO.



WHITTINGHILL CRAWFORD TO HAVEN



R/W S. HAVEN STEAHLIN TO VIEMONT



SANITARY SEWER
 BLOCKS 3 & 4
 EISENHOWER ADD.
 CONST. - MAY, 1954
 MICHAELSON CONST. CO.