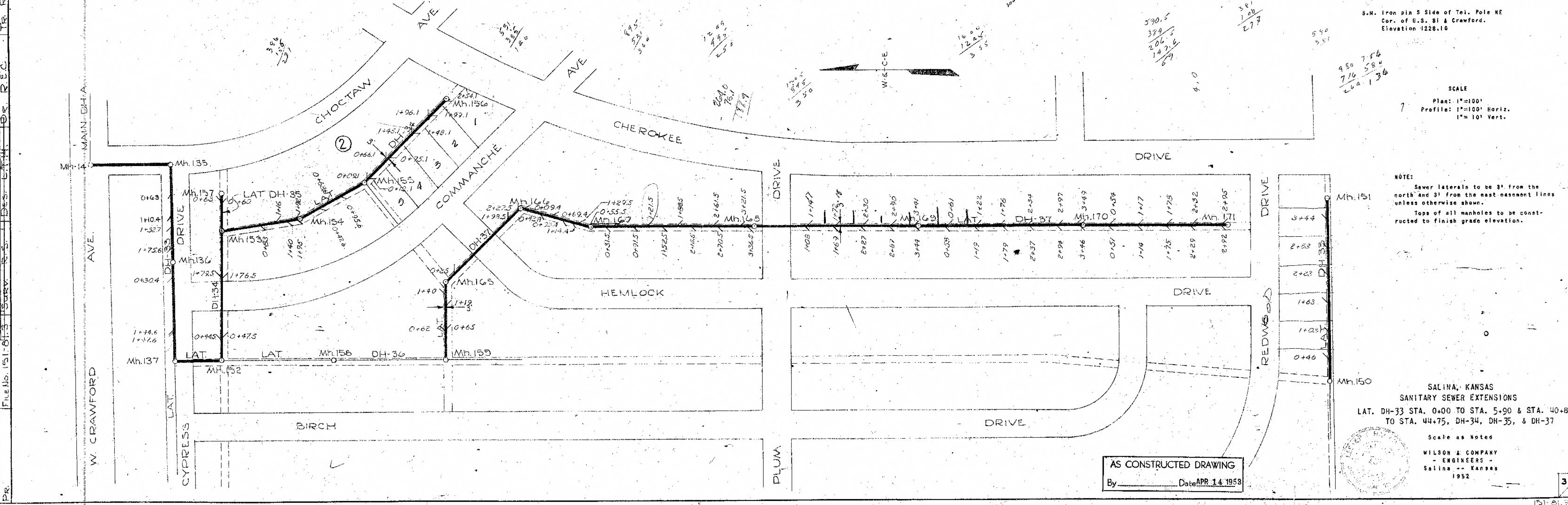
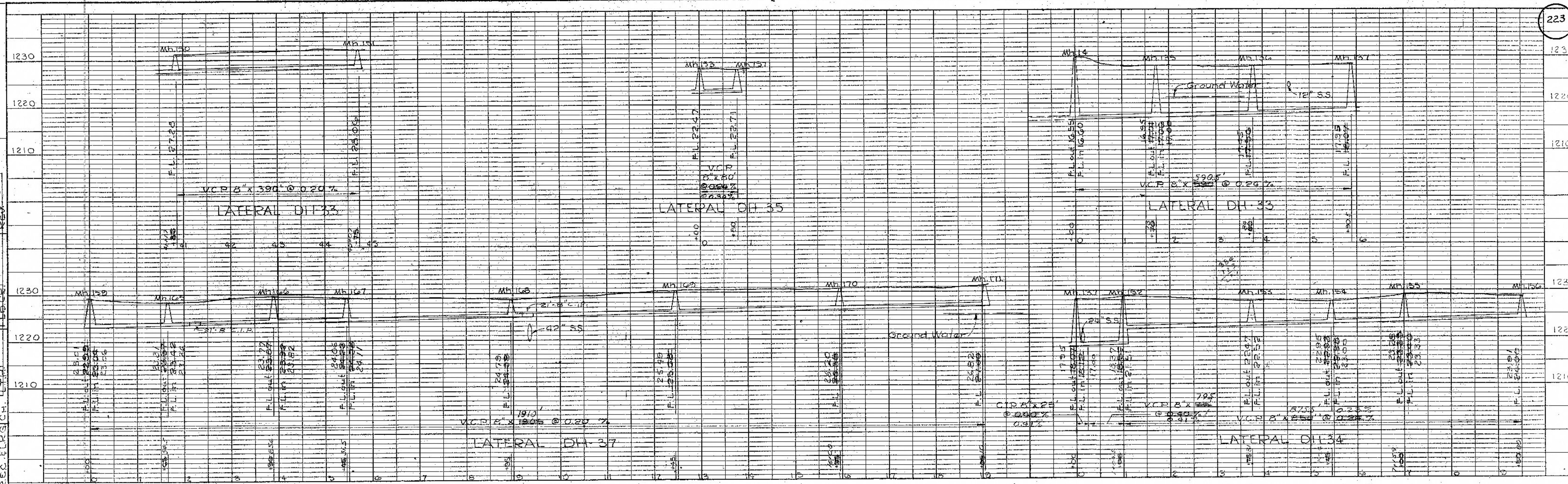


NO.	DATE	BY	REVISION
1			
2			
3			
4			
5			
6			
7			
8			
9			
10			
11			
12			
13			
14			
15			
16			
17			
18			
19			
20			
21			
22			
23			
24			
25			
26			
27			
28			
29			
30			
31			
32			
33			
34			
35			
36			
37			
38			
39			
40			
41			
42			
43			
44			
45			
46			
47			
48			
49			
50			
51			
52			
53			
54			
55			
56			
57			
58			
59			
60			
61			
62			
63			
64			
65			
66			
67			
68			
69			
70			
71			
72			
73			
74			
75			
76			
77			
78			
79			
80			
81			
82			
83			
84			
85			
86			
87			
88			
89			
90			
91			
92			
93			
94			
95			
96			
97			
98			
99			
100			

NO.	DATE	BY	REVISION
1			
2			
3			
4			
5			
6			
7			
8			
9			
10			
11			
12			
13			
14			
15			
16			
17			
18			
19			
20			
21			
22			
23			
24			
25			
26			
27			
28			
29			
30			
31			
32			
33			
34			
35			
36			
37			
38			
39			
40			
41			
42			
43			
44			
45			
46			
47			
48			
49			
50			
51			
52			
53			
54			
55			
56			
57			
58			
59			
60			
61			
62			
63			
64			
65			
66			
67			
68			
69			
70			
71			
72			
73			
74			
75			
76			
77			
78			
79			
80			
81			
82			
83			
84			
85			
86			
87			
88			
89			
90			
91			
92			
93			
94			
95			
96			
97			
98			
99			
100			



B.M. Iron pin S Side of Tel. Pole NE  
 Cor. of U.S. St & Crawford.  
 Elevation 1228.10

SCALE  
 Plan: 1"=100'  
 Profile: 1"=100' Horiz.  
 1"=10' Vert.

NOTE:  
 Sewer laterals to be 3' from the north and 3' from the east easement lines unless otherwise shown.  
 Tops of all manholes to be constructed to finish grade elevation.

SALINA, KANSAS  
 SANITARY SEWER EXTENSIONS  
 LAT. DH-33 STA. 0+00 TO STA. 5+90 & STA. 40+85  
 TO STA. 44+75, DH-34, DH-35, & DH-37

Scale as Noted  
 WILSON & COMPANY  
 ENGINEERS  
 Salina - Kansas  
 1952

AS CONSTRUCTED DRAWING  
 By \_\_\_\_\_ Date APR 14 1958