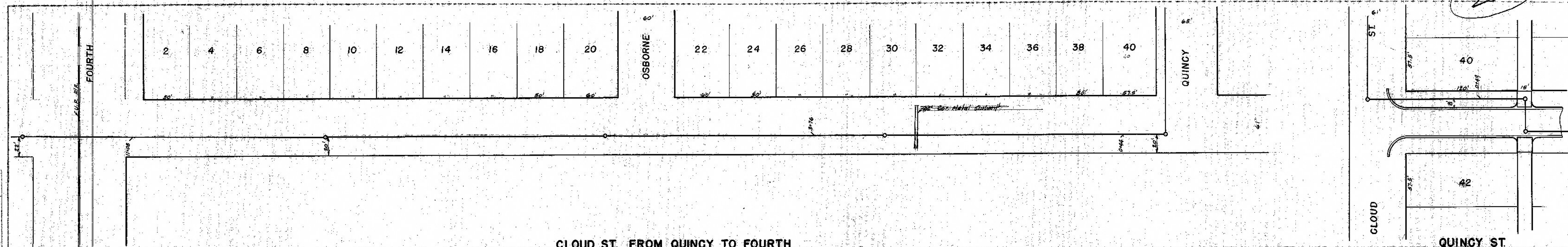
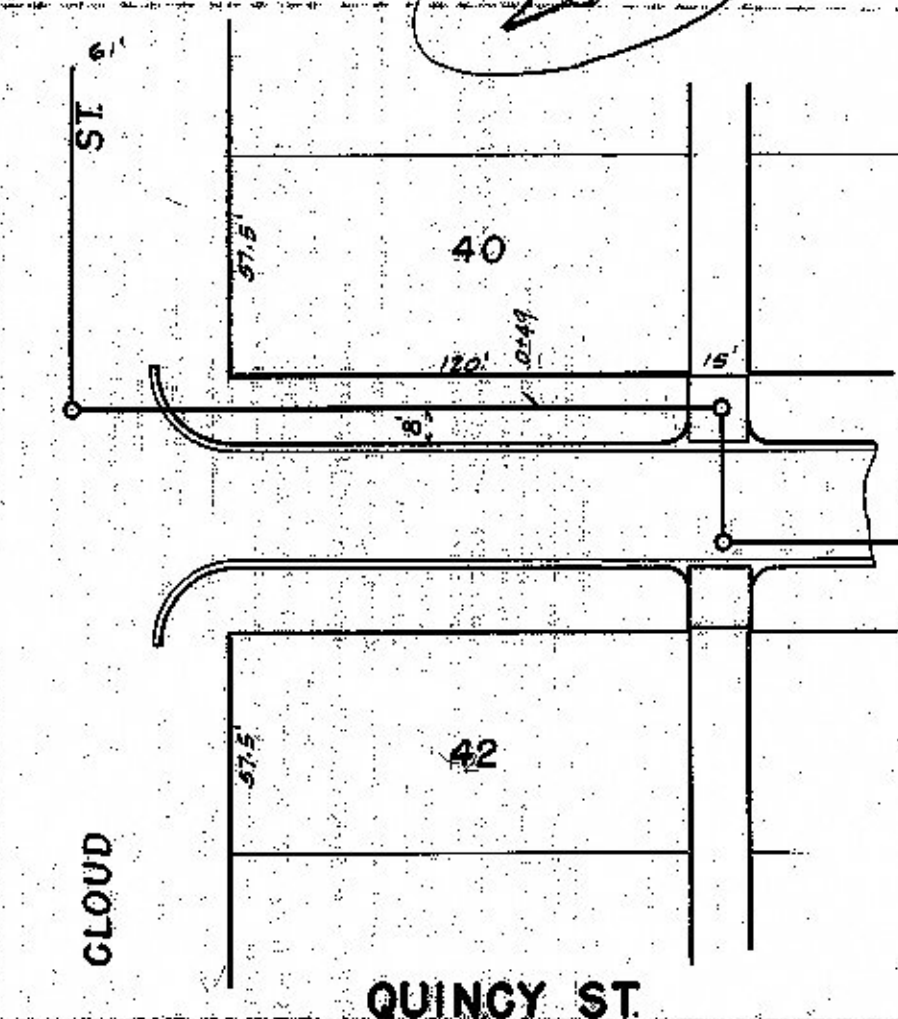


462 44 142
207

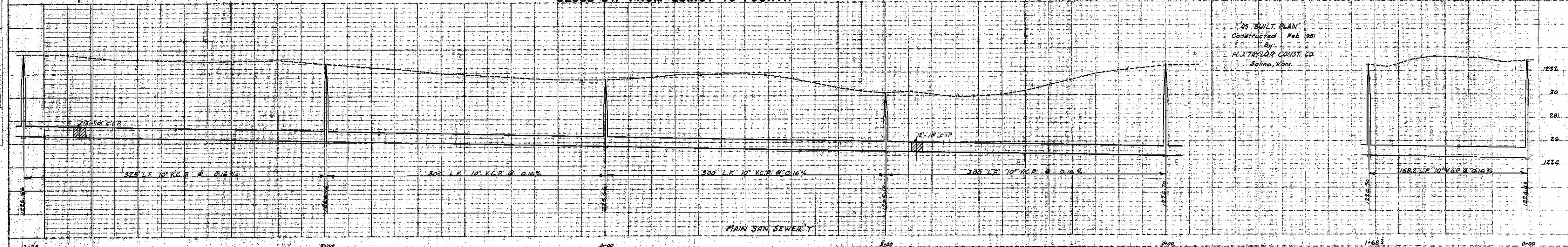


CLOUD ST. FROM QUINCY TO FOURTH

AS BUILT PLAN
Constructed Feb 1951
By
H. J. TAYLOR CONST. CO.
Salina, Kans.



PLAN	SUPPLIED	DATE
NO.	PLOTTED	BY
	NOTE BOOK GRADES CHECKED	
	STRUCTURE NOTATIONS CHECKED	



PROFILE	SUPPLIED	DATE
NO.	PLOTTED	BY
	NOTE BOOK GRADES CHECKED	
	STRUCTURE NOTATIONS CHECKED	

