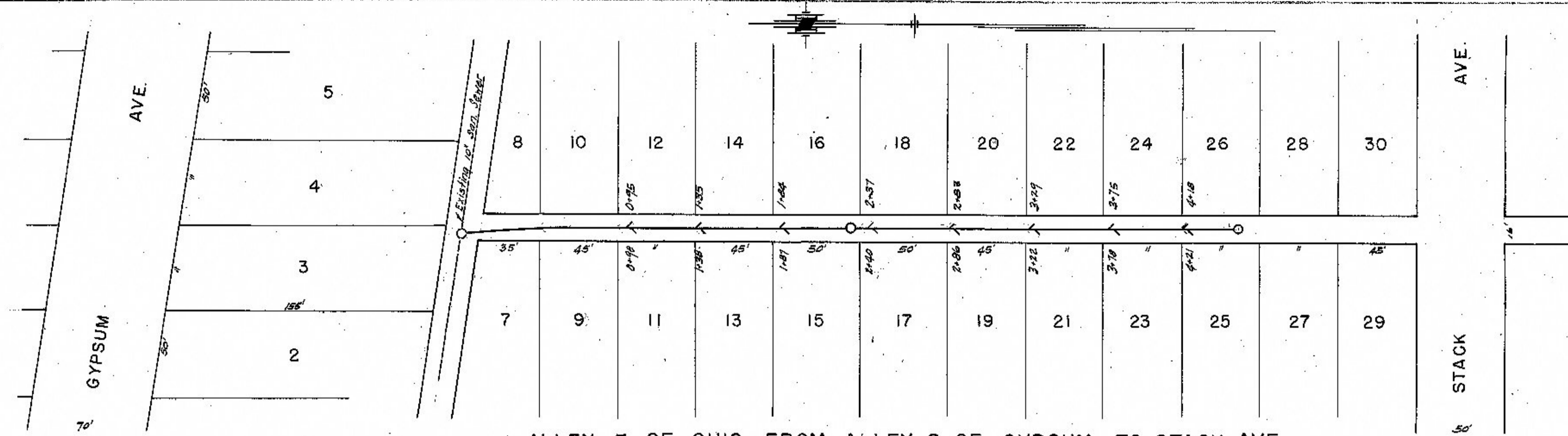


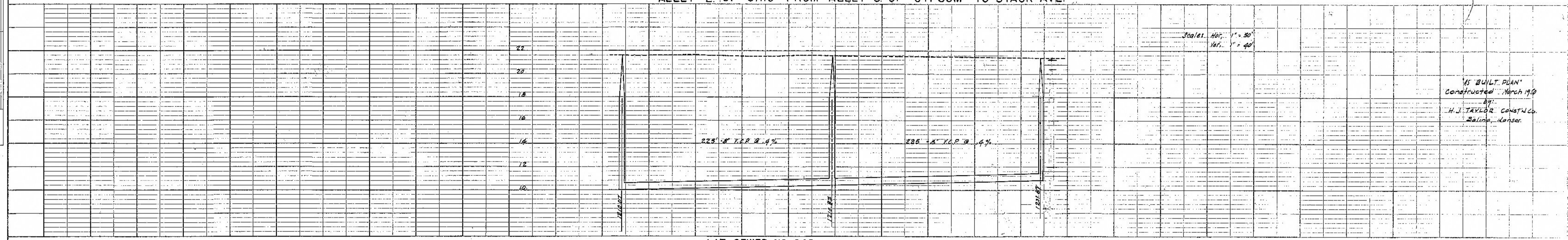
204



ALLEY E. OF OHIO FROM ALLEY S. OF GYPSUM TO STACK AVE.

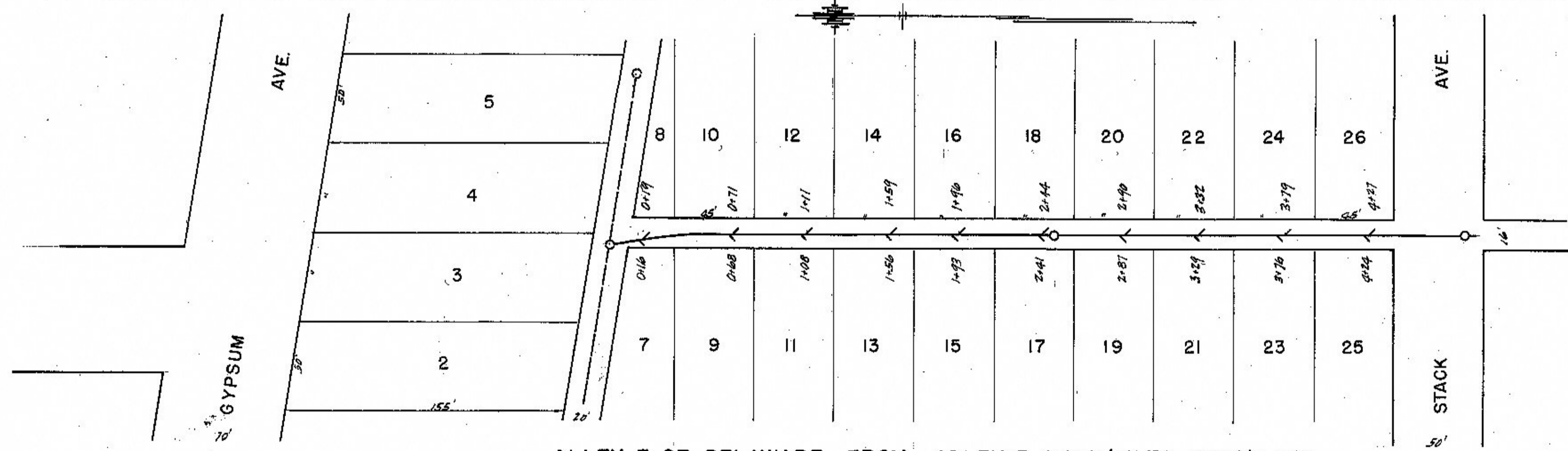
PLAN

DATE	
BY	
SURVEYED	
NOTED	
ALIGNED	
CHECKED	
NO.	



LAT. SEWER NO. 248

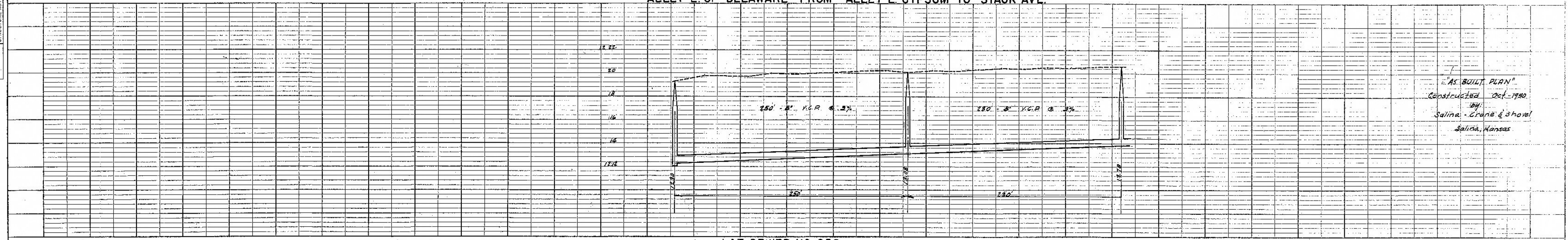
"AS BUILT PLAN"
 Constructed March 1910
 by
 H. J. TAYLOR CONSTN CO.
 Salina, Kansas



ALLEY E. OF DELAWARE FROM ALLEY E. GYPSUM TO STACK AVE.

PROFILE

DATE	
BY	
SURVEYED	
NOTED	
ALIGNED	
CHECKED	
NO.	



LAT. SEWER NO. 252

"AS BUILT PLAN"
 Constructed Oct. 1920
 by
 Salina - Crane & Shaw
 Salina, Kansas