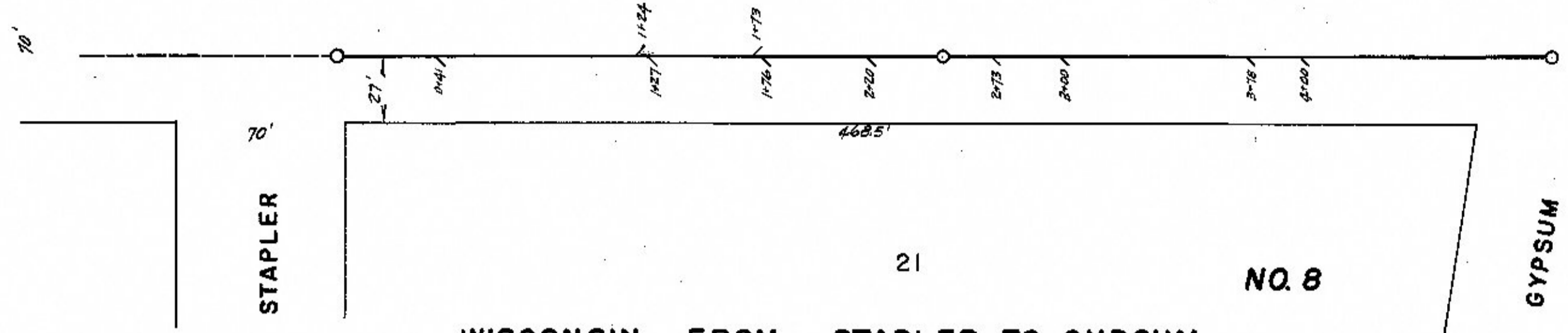


196

SURVEYORS PLAT

20

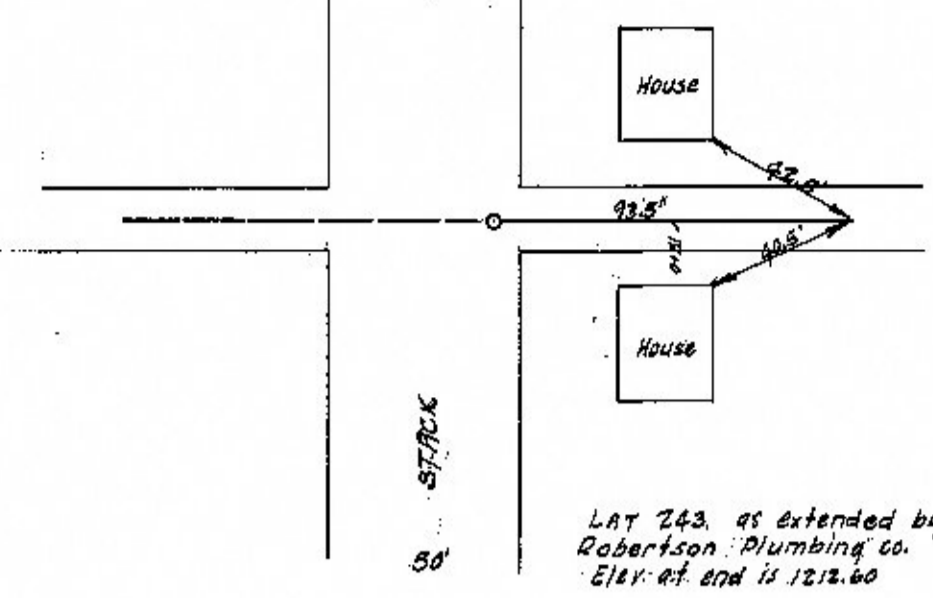
70'



STAPLER

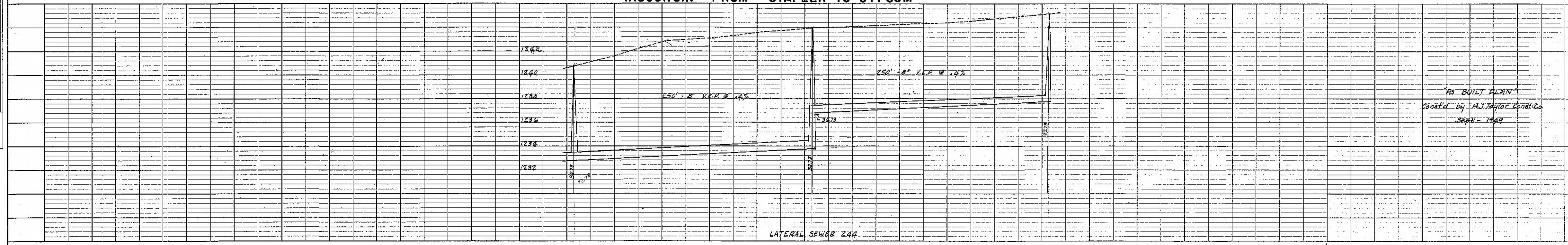
GYPSUM

WISCONSIN FROM STAPLER TO GYPSUM

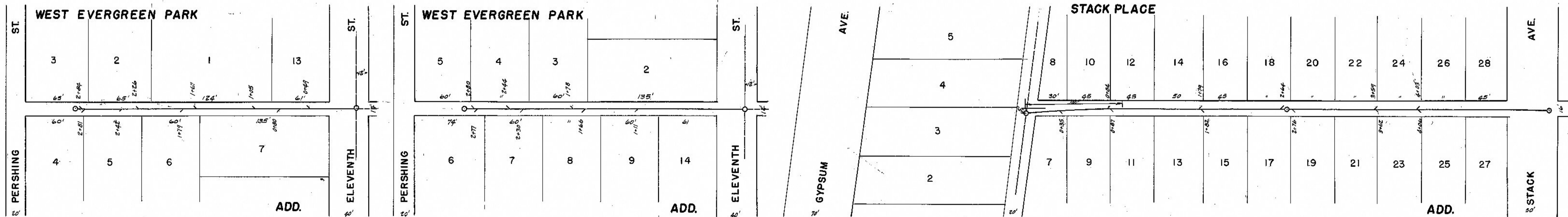


LAY 243, as extended by  
Robertson Plumbing Co.  
Elev. of and is 1212.60

PLAN	SURVEYED	DATE
	PLOTTED	
	ALIGNED	
	CHECKED	
	BY	
	NO.	



PROFILE	SURVEYED	DATE
	PLOTTED	
	CHECKED	
	BY	
	NO.	



ALLEY N. WOODLAND - ELEVENTH TO PERSHING

ALLEY N. CLOUD - ELEVENTH TO PERSHING

ALLEY E. CONNECTICUT - ALLEY S. GYPSUM TO STACK AVE.

