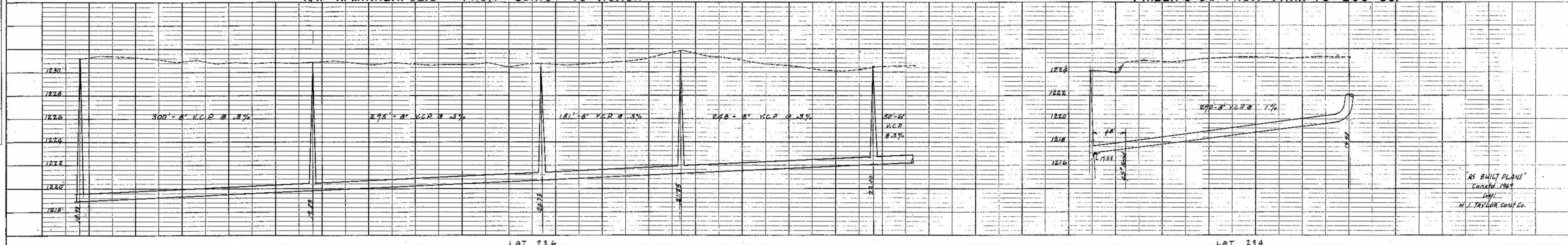


R/W N. MINNEAPOLIS FROM QUINCY TO ROACH

PHILLIPS ST. FROM PARK TO 290' SO.

PLAN SURVEYED BY DATE  
 PLOTTED BY  
 NOTE BOOK NO. OF WAY CHECKED.  
 NO. OF WAY CHECKED.

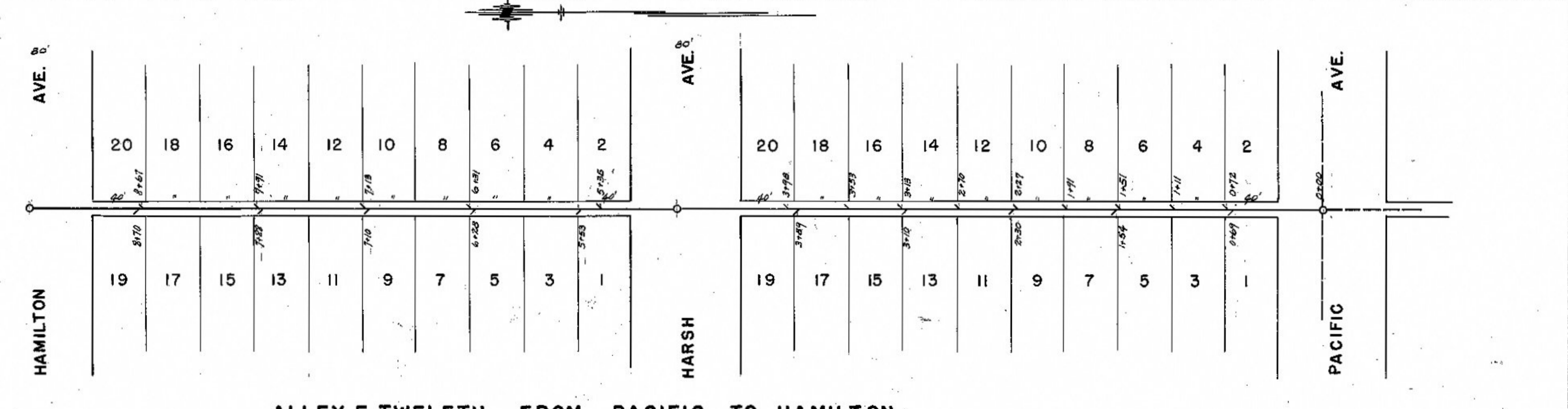
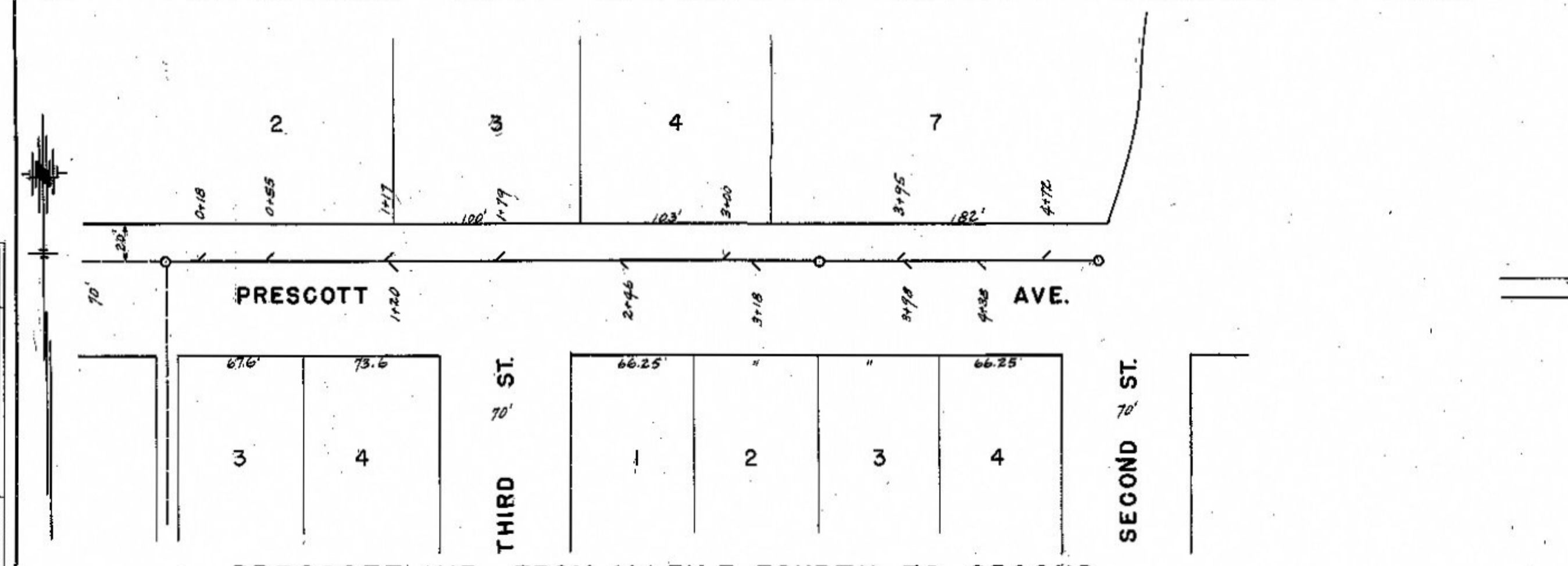


LAT 236

LAT 234

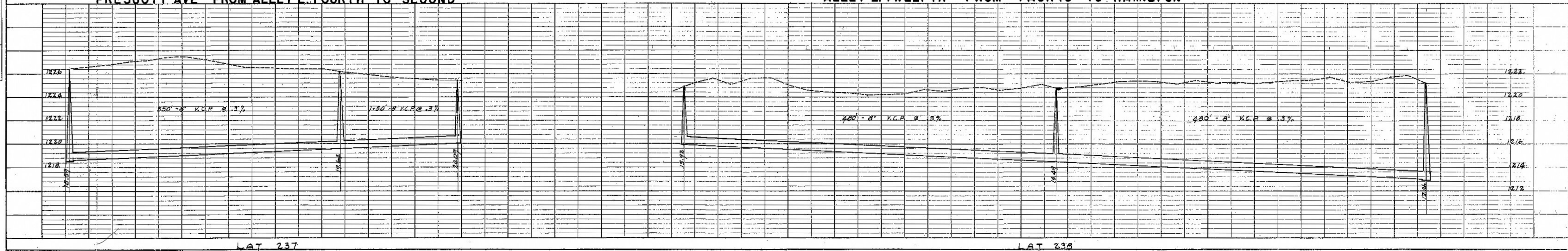
AS BUILT PLANS  
 DATED 1947  
 H. J. TAYLOR CONST. CO.

PROFILE SURVEYED BY DATE  
 PLOTTED BY  
 NOTE BOOK NO. OF WAY CHECKED.  
 NO. OF WAY CHECKED.



PRESCOTT AVE FROM ALLEY E. FOURTH TO SECOND

ALLEY E. TWELFTH FROM PACIFIC TO HAMILTON



LAT 237

LAT 238