

183

PLAN

DATE: _____

BY: _____

CHECKED: _____

SCALE: _____

NOTE: SEE GRADES ON PLAN

NO. _____

PROFILE

DATE: _____

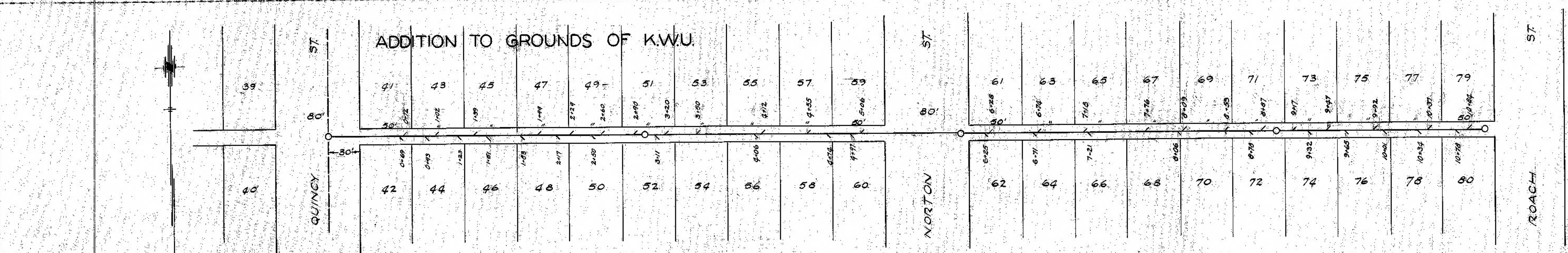
BY: _____

CHECKED: _____

SCALE: _____

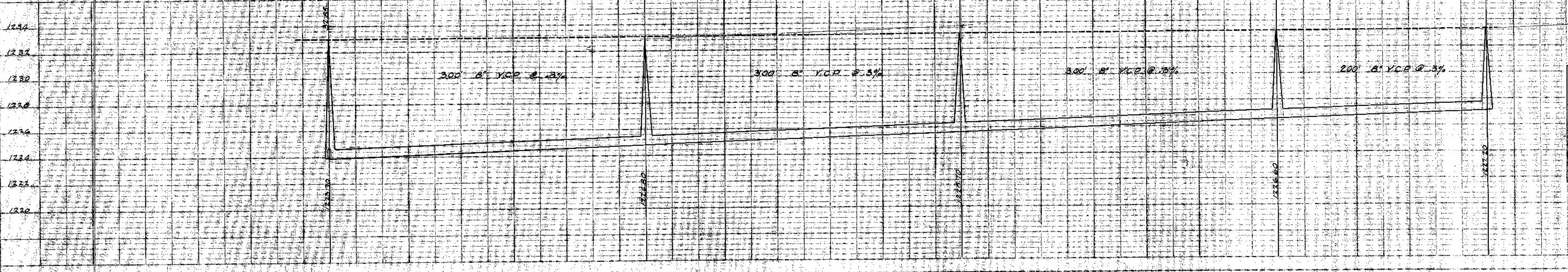
NOTE: SEE GRADES ON PLAN

NO. _____



BM 2014 in Base of Tel Pole
at N.W. Cor. of Fox's Barn Elev. 1233.45

ALLEY N. CLAFLIN FROM QUINCY TO ROACH

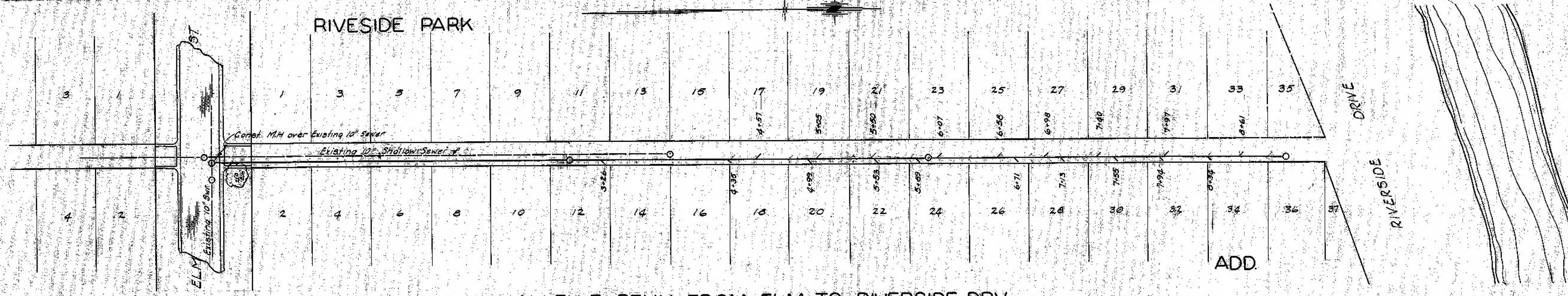


CITY OF SALINA
ENGINEERING DEPARTMENT

LATERAL
SANITARY SEWER 221

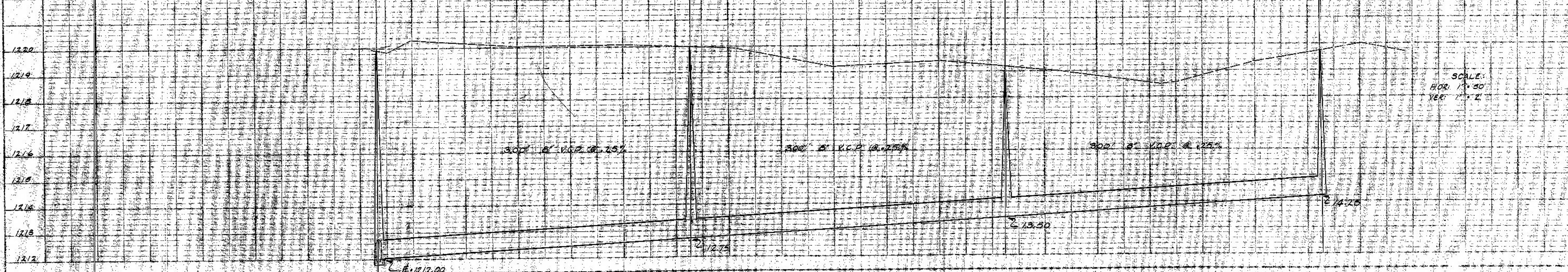
JOB NO. 233

H.F. HARPER FILED 2-19-1917
CITY ENGINEER CITY CLERK



BM 12 in Corey on Hwy
N.E. Cor. Elm & Penn Elev. 1222.76

ALLEY E. PENN FROM ELM TO RIVERSIDE DRV



CITY OF SALINA
ENGINEERING DEPARTMENT

LATERAL
SANITARY SEWER 220

JOB NO. 233

H.F. HARPER FILED 2-19-1917
CITY ENGINEER CITY CLERK

SCALE:
HOR. 1" = 30'
VER. 1" = 2'