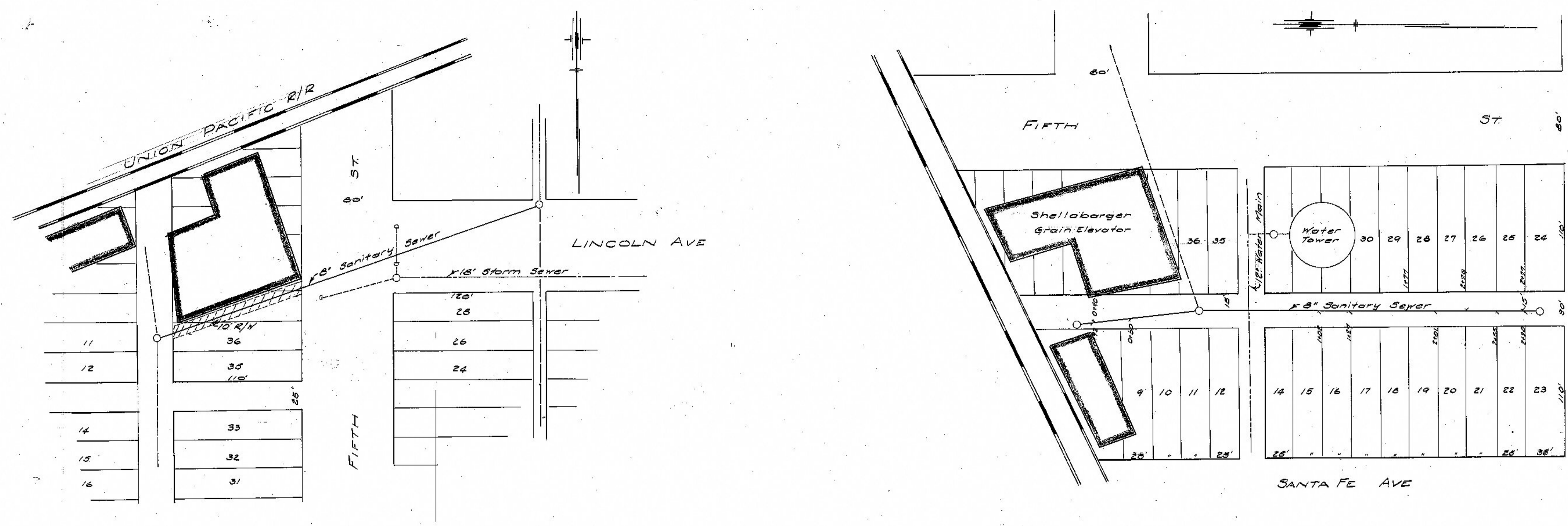


180

PLAN	DATE	BY
SUBJECT	1924	Harper
NOTE BOOK		
NO.		

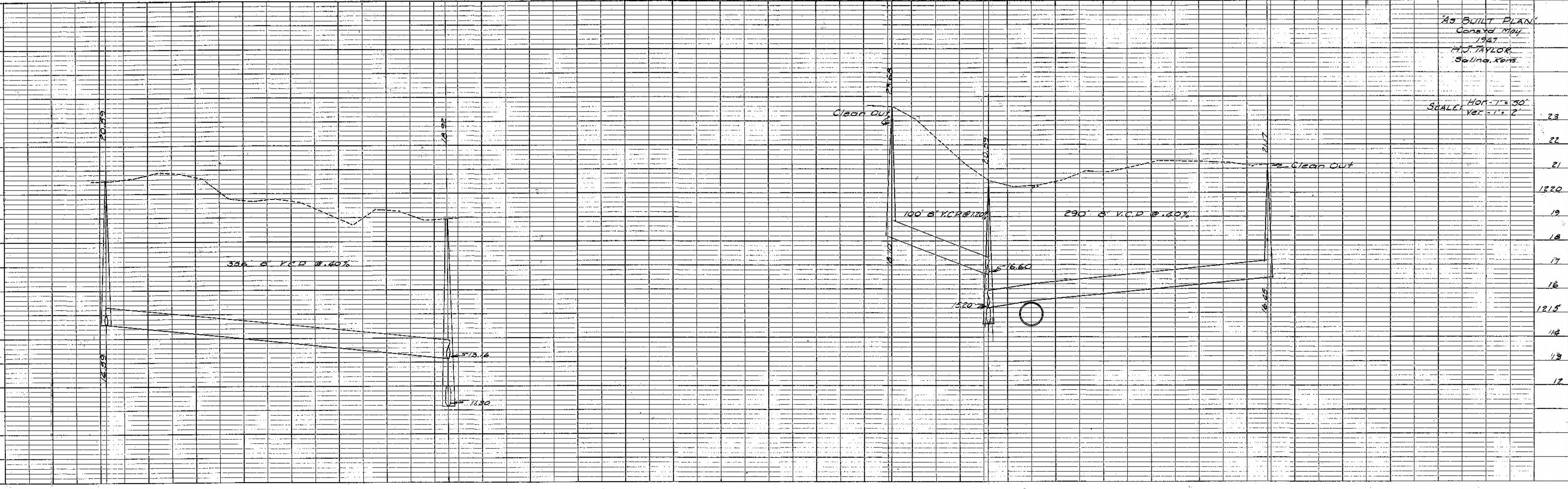
PROFILE	DATE	BY
SUBJECT	1924	Harper
NOTE BOOK		
NO.		



LINCOLN FROM ALLEY E. FIFTH TO ALLEY E. SANTA FE

ALLEY E. SANTA FE FROM U.P. R/W TO NORTH ST

CITY OF SALINA
 CITY ENGINEERING DEPT
 SANITARY SEWER
 LATERAL NO 209
 JOB NO 223
 H.F. HARPER, CITY ENGINEER



As BUILT PLAN
 Const'd May
 1921
 H.J. TAYLOR
 Salina, Kans.

SCALE: HOR - 1" = 30'
 VER - 1" = 2'