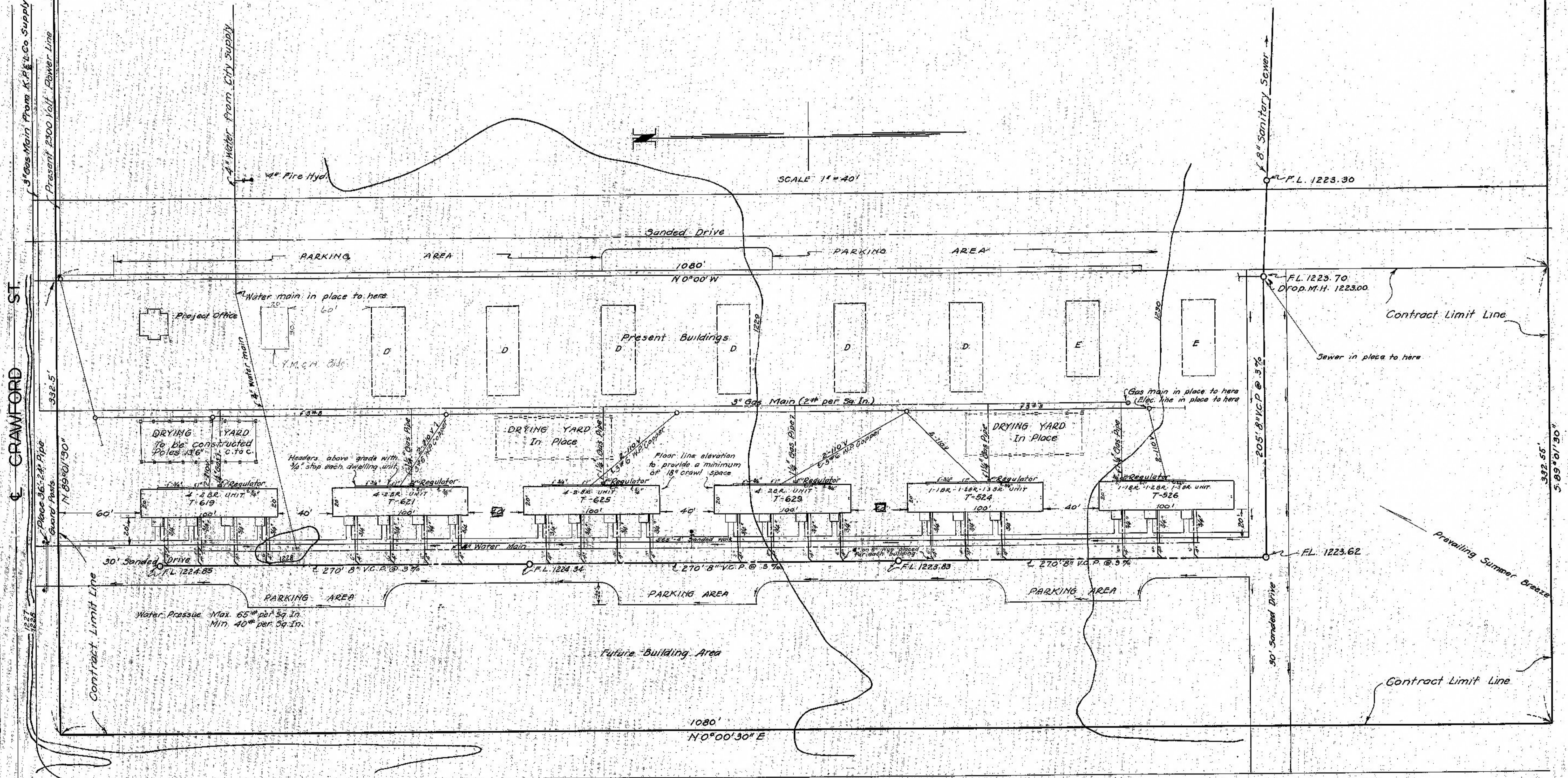


N.E. COR. OF N.W. 1/4 SEC. 23, T-14S., R.3W OF 6TH. RM.

VETERANS HOUSING PROJECT

V-14158



SCALE: 1" = 40'

- Water Lines** - 4" Water main in place where indicated.
City to lay 4" mains.
F.P.H.A. to lay service lines from street to buildings.
- Gas Lines** - 3" Gas mains in place where indicated.
Power Co. to place service lines to regulators.
F.P.H.A. to place into buildings.
- Electric Lines** - Electric lines in place where indicated.
Power Co. to place to outside of buildings.
F.P.H.A. to place into buildings.
- Sewers** - Sewer mains in place where indicated.
City to construct 8" mains in streets, with connecting wyes.
F.P.H.A. to construct 4" sewers from wyes to buildings.
- Drives** - City to grade and sand drives as indicated.
- Sidewalks** - City to grade and sand sidewalks parallel with street.
F.P.H.A. to grade and sand into building entrances.

CITY OF SALINA
ENGINEERING DEPARTMENT
PLAT SHOWING LOCATION
FOR
VETERAN'S HOUSING PROJECT
SALINA, KANSAS V-14158
AUGUST 1946 H.F. HARPER, CITY ENG.