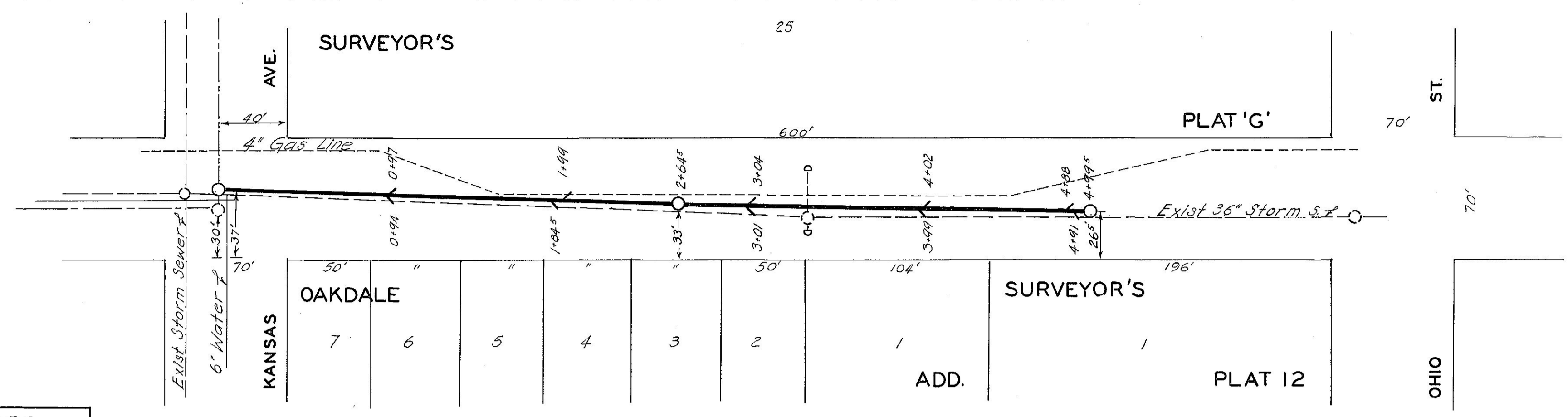
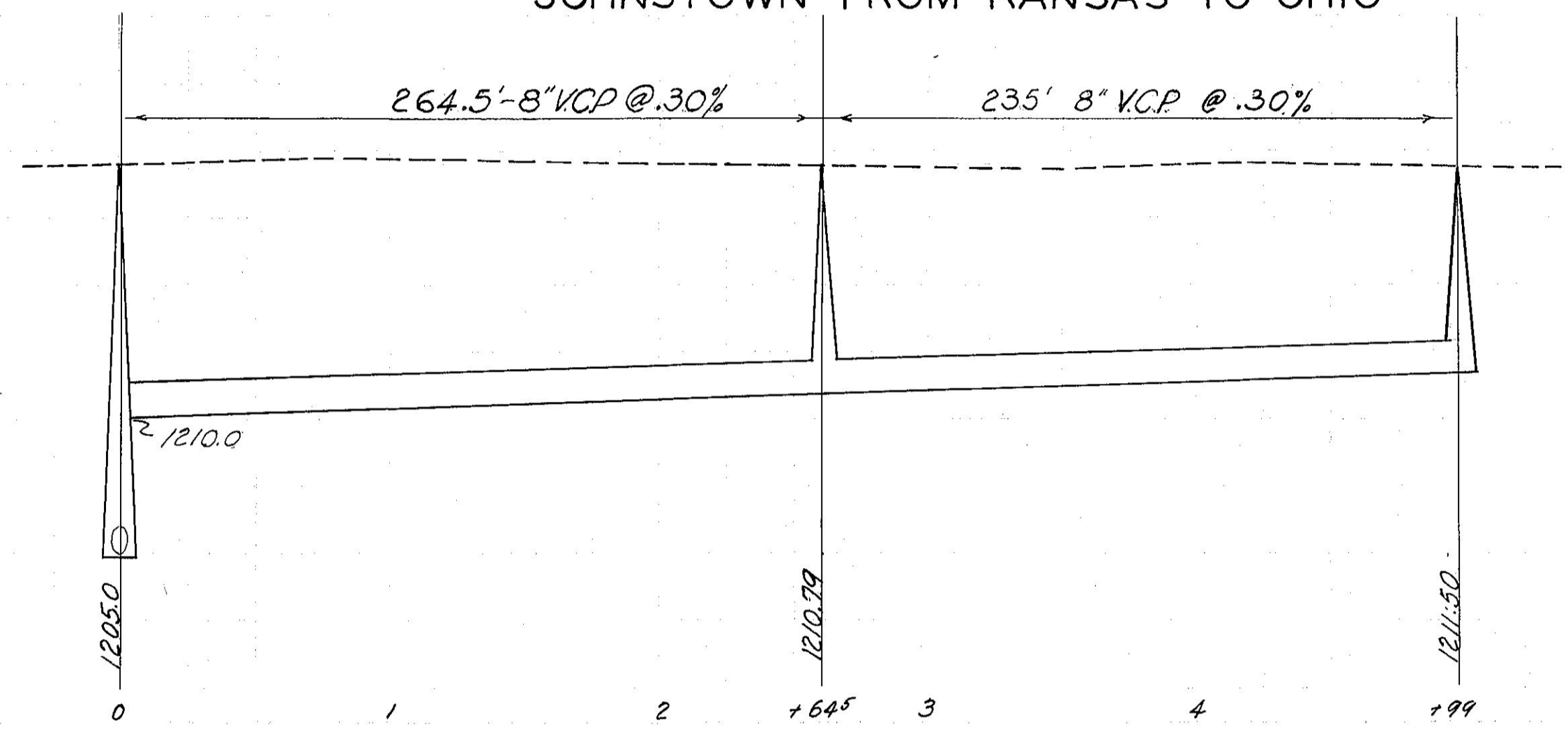


178



BM*502 11' in Mfg on Hyd S.E. Cor
Johnstown & Ohio Elev - 1223.007

JOHNSTOWN FROM KANSAS TO OHIO

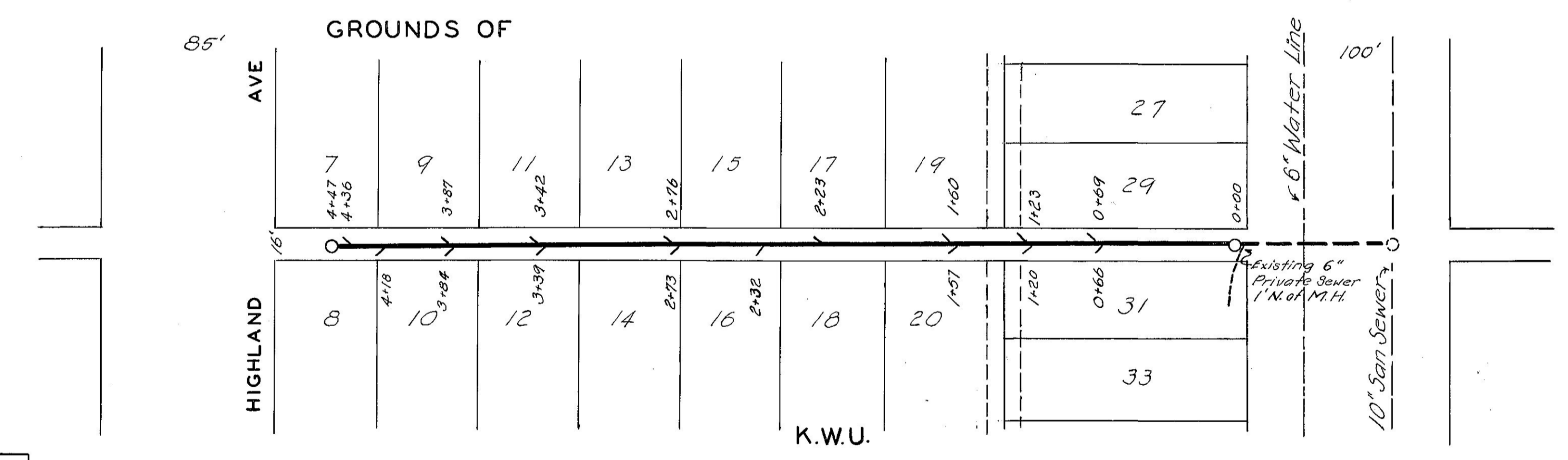


LAT 207

'As BUILT PLAN'
Const'd Mar 46
By:
H.J. Taylor Const. Co. Salina Kans

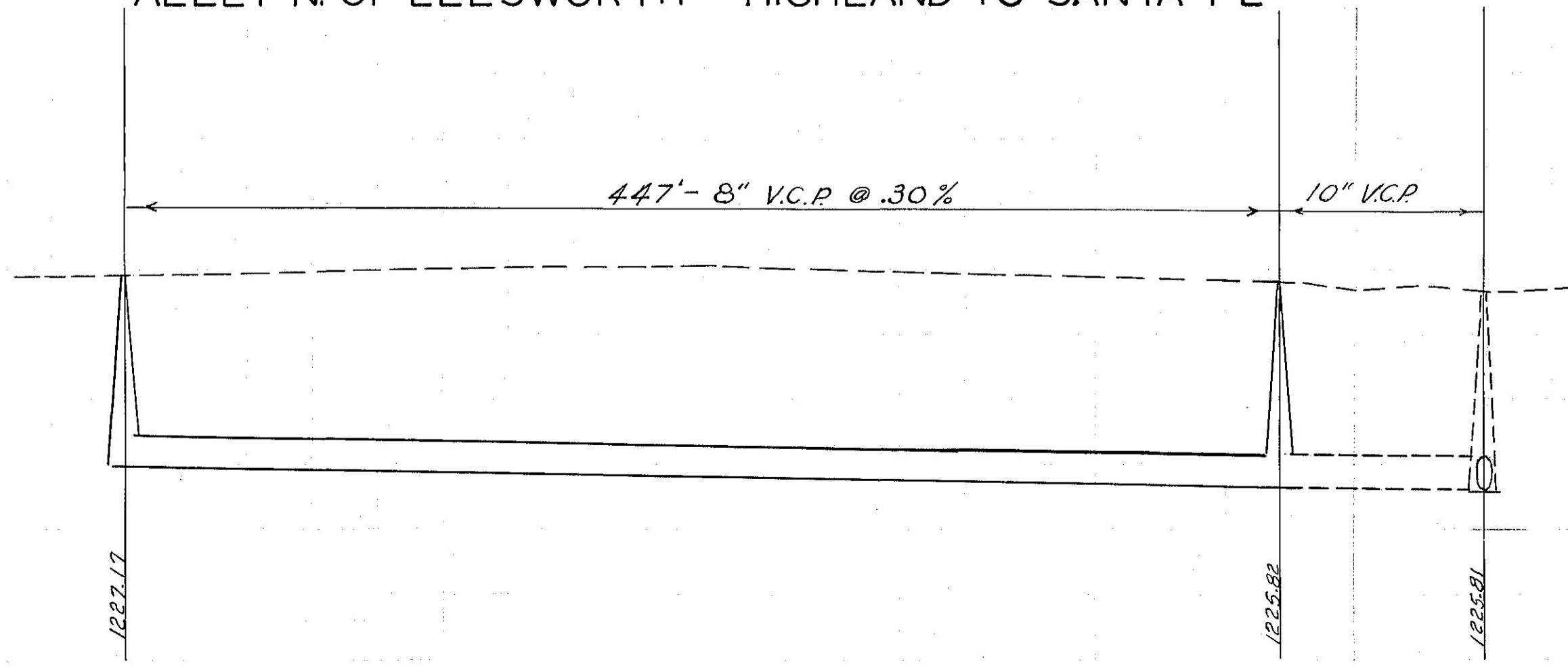
Scale:
Hor 1"=50'
Ver 1"=5'

CITY OF SALINA
ENGINEERING DEPARTMENT
SANITARY SEWER NO. 207
JOHNSTOWN
KANSAS TO OHIO
JOB 217
H. F. HARPER ORD. 5116
CITY ENGINEER FILED 2 Nov 45
Chas. Bowen



W. Edge Ring of M.H. of existing
10" San Sewer in Santa fe Elev. 1233.95

ALLEY N. OF ELLSWORTH - HIGHLAND TO SANTA FE



LAT 208

'As BUILT PLAN'
Const'd Apr 46
By:
H.J. Taylor Const. Co. Salina, Kans

CITY OF SALINA
ENGINEERING DEPARTMENT
SANITARY SEWER NO. 208
ALLEY N. ELLSWORTH
HIGHLAND TO SANTA FE
JOB _____
H. F. HARPER ORD. _____
CITY ENGINEER FILED _____

John F. Berrier
11/17/45

John F. Berrier

John F. Berrier
11/17/45

John F. Berrier

3875