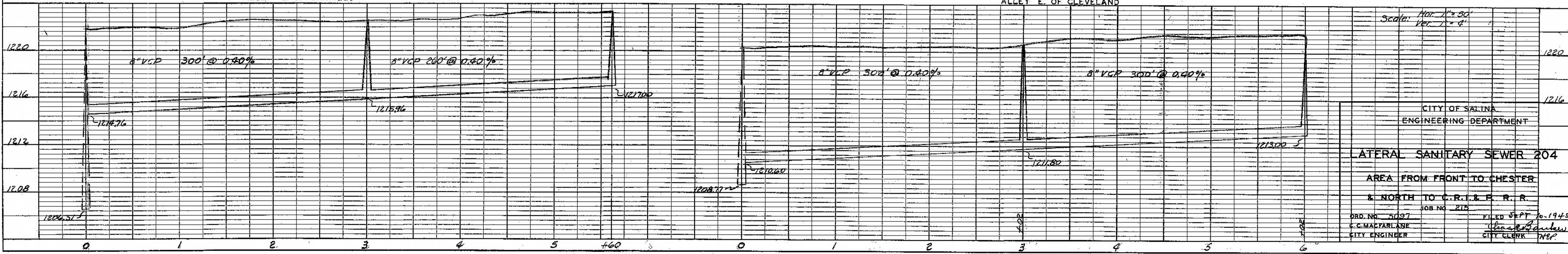
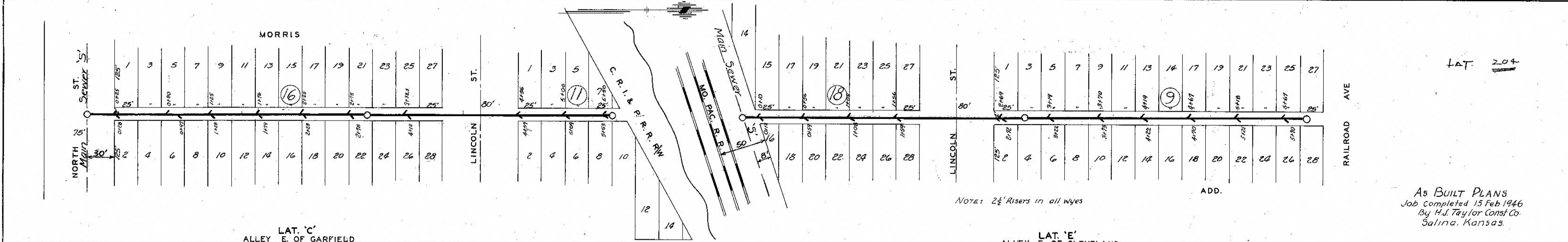
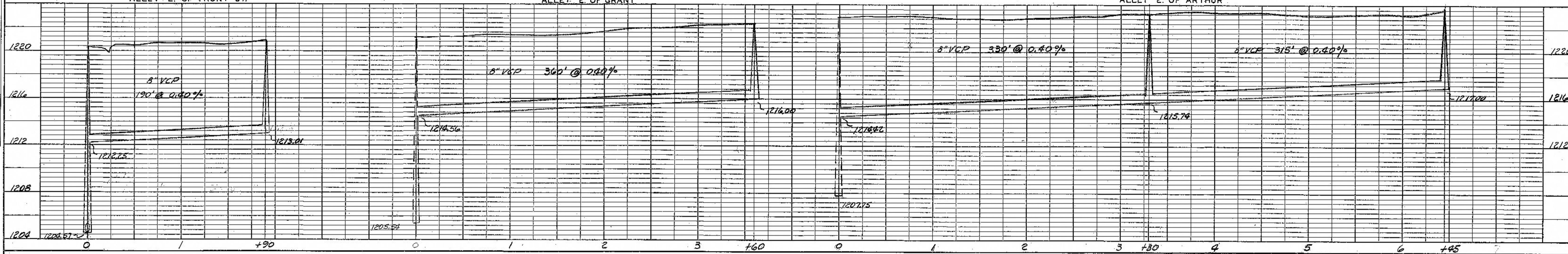
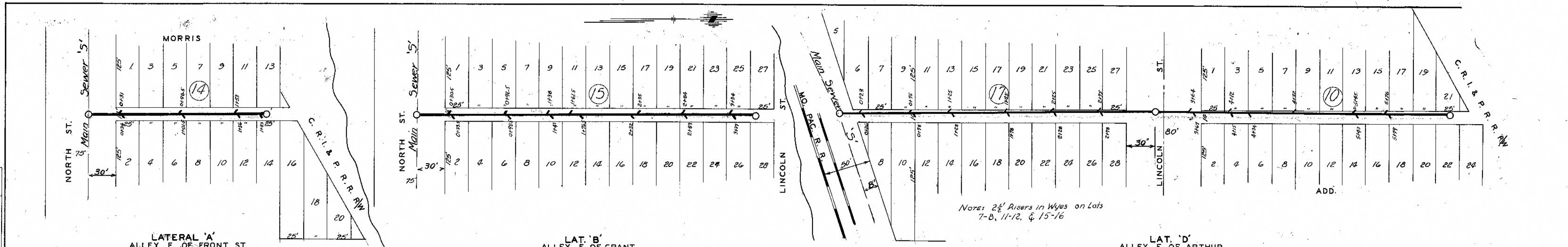


PLAN SURVEYED BY C. MacFarlane
 PLOTTED BY C. MacFarlane
 NOTE BOOK NO. 5037
 ALIGNMENT CHECKED BY H.J. Taylor
 RT. OF WAY CHECKED BY H.J. Taylor

PROFILE SURVEYED BY C. MacFarlane
 PLOTTED BY C. MacFarlane
 NOTE BOOK NO. 5037
 S.M. & NOTED BY H.J. Taylor
 STRUCTURE NOTATIONS CHECKED BY H.J. Taylor



As BUILT PLANS
 Job completed 15 Feb 1946
 By H.J. Taylor Const. Co.
 Salina, Kansas.

Scale: Hor. 1" = 50'
 Ver. 1" = 4'

CITY OF SALINA
 ENGINEERING DEPARTMENT

LATERAL SANITARY SEWER 204
 AREA FROM FRONT TO CHESTER
 & NORTH TO C.R.I. & P.R.R.

ORD. NO. 5037
 C.C. MACFARLANE
 CITY ENGINEER

JOB NO. 215
 FILED SEPT 10 1945
 H.J. Taylor
 CITY CLERK