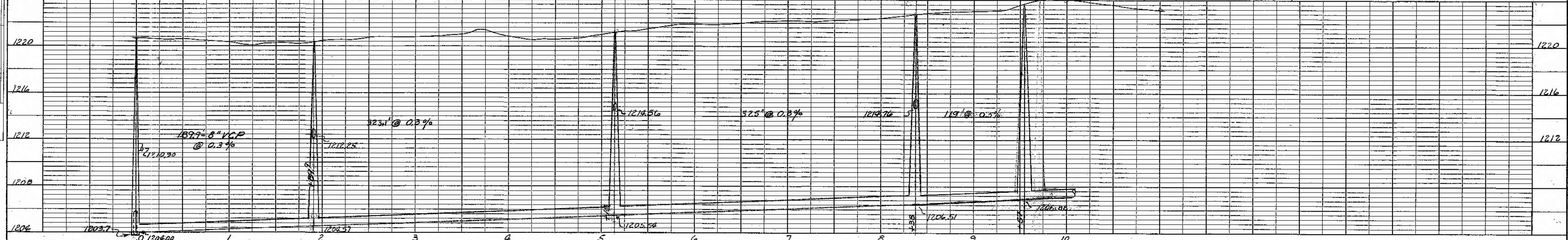
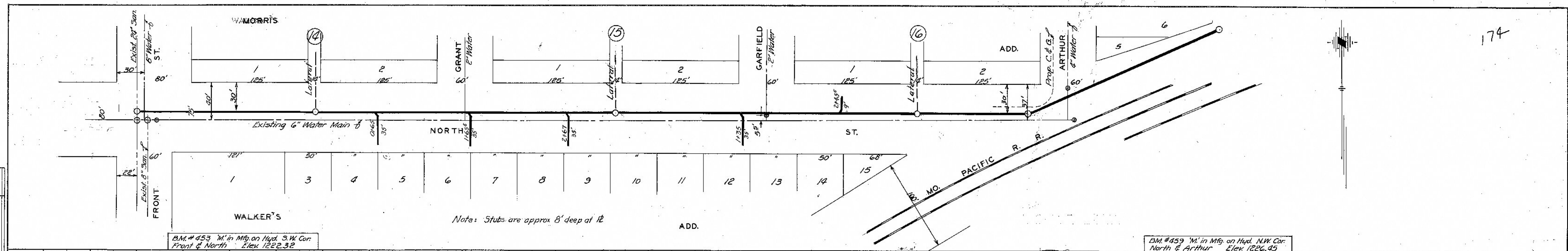
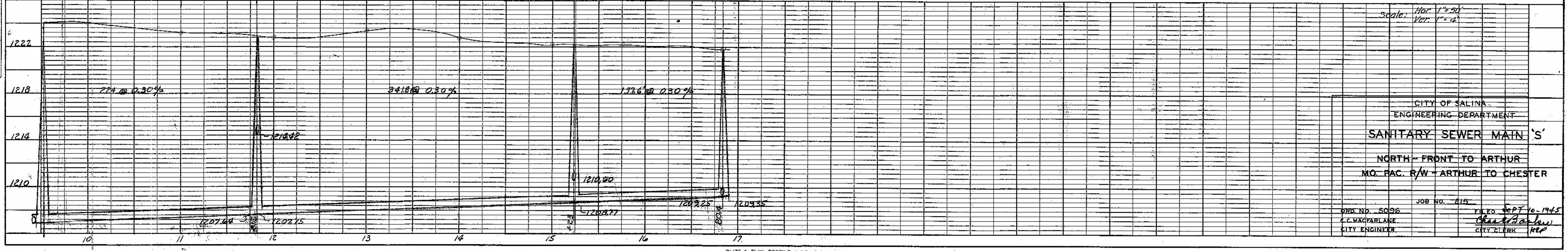
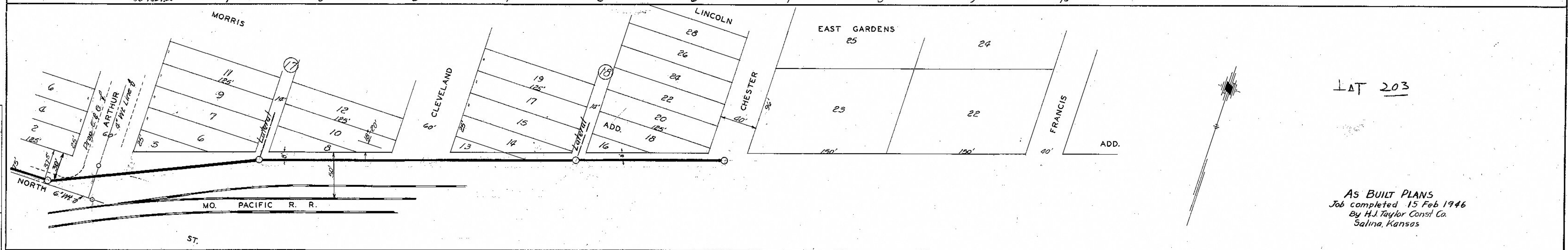


DATE 6-13-46
 BY C. MacFarlane
 SURVEYED
 PLOTTED
 CHECKED
 BY OF WAY CHECKED



DATE
 BY
 SURVEYED
 PLOTTED
 CHECKED
 BY OF WAY CHECKED



LAT 203

AS BUILT PLANS
 Job completed 15 Feb 1946
 By H.J. Taylor Const Co.
 Salina, Kansas

Scale: Hor. 1"=50'
 Ver. 1"=4'

CITY OF SALINA
 ENGINEERING DEPARTMENT
SANITARY SEWER MAIN 'S'
 NORTH - FRONT TO ARTHUR
 MO. PAC. R/W - ARTHUR TO CHESTER

JOB NO. 215
 FILED DEPT 10-1945
 C. C. MACFARLANE
 CITY ENGINEER
 CHARLES BRUNING
 CITY CLERK