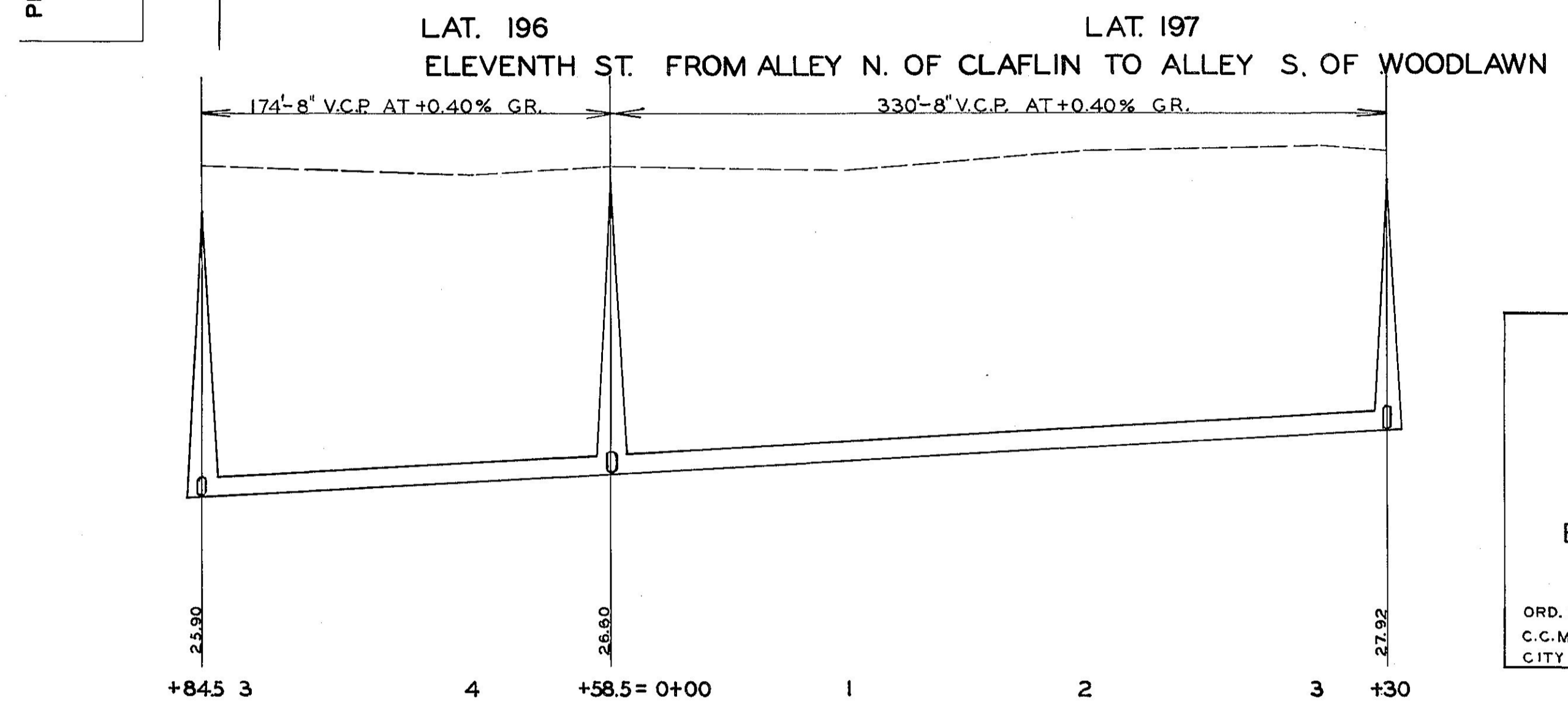
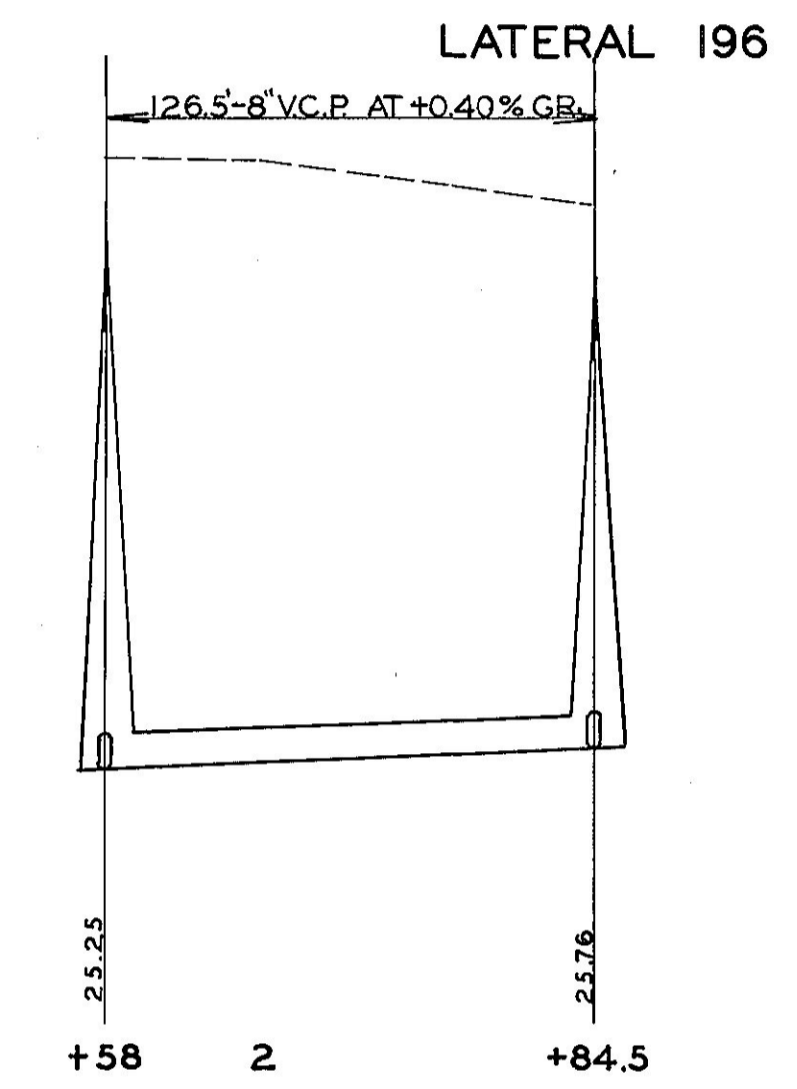
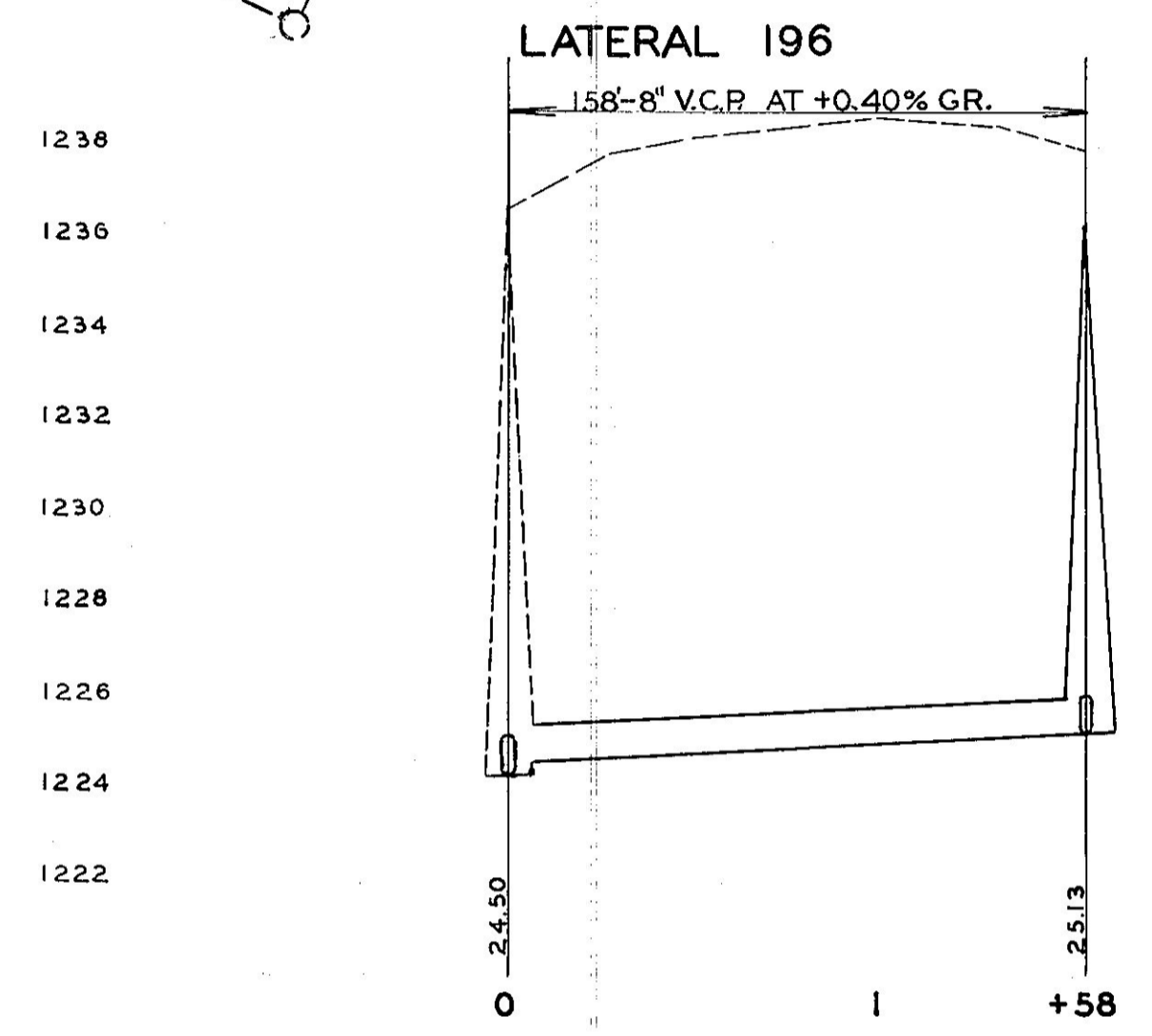
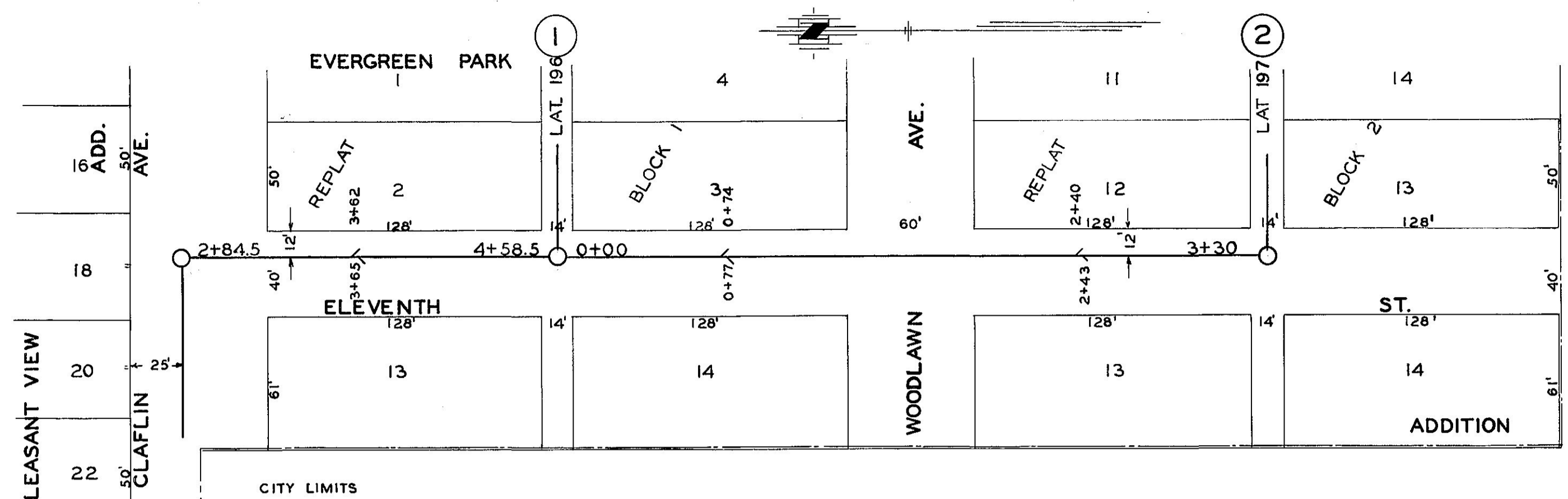
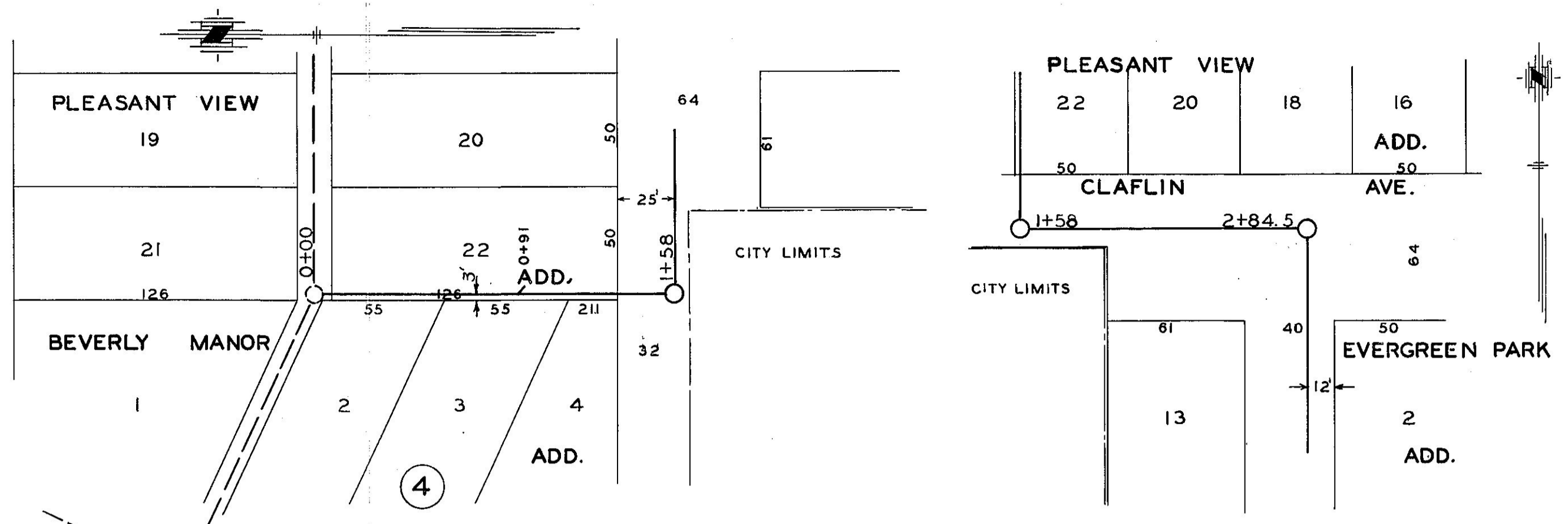


170



HORIZONTAL 1"=50'  
VERTICAL 1"=4'

CITY OF SALINA  
ENGINEERING DEPARTMENT

**SANITARY SEWER  
LATERAL NO. 196  
LATERAL NO. 197  
EVERGREEN PARK ADDITION**

JOB NO. 207

ORD. NO. 5086 FILED OCT. 9 1944  
C. C. MACFARLANE  
CITY ENGINEER *Chas. Banker*  
CITY CLERK

