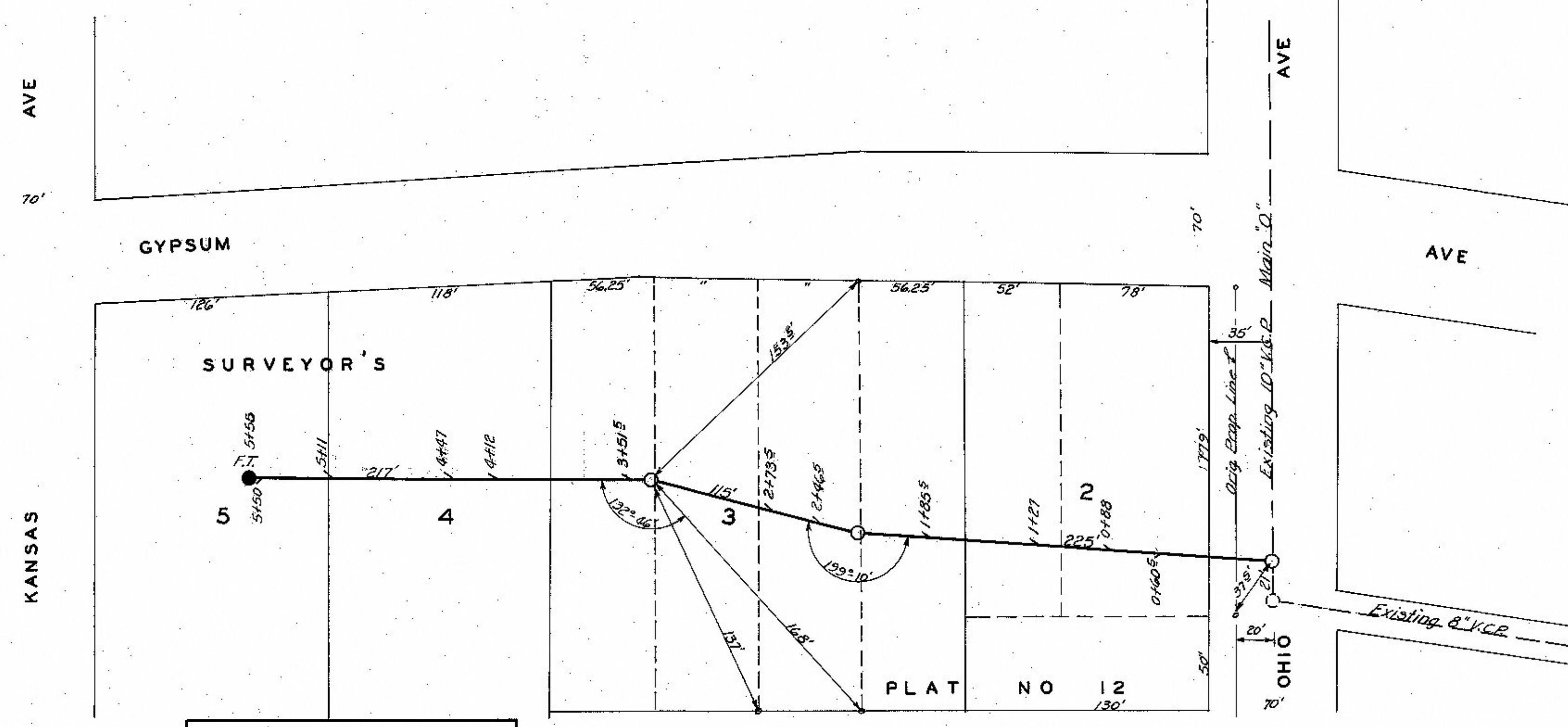
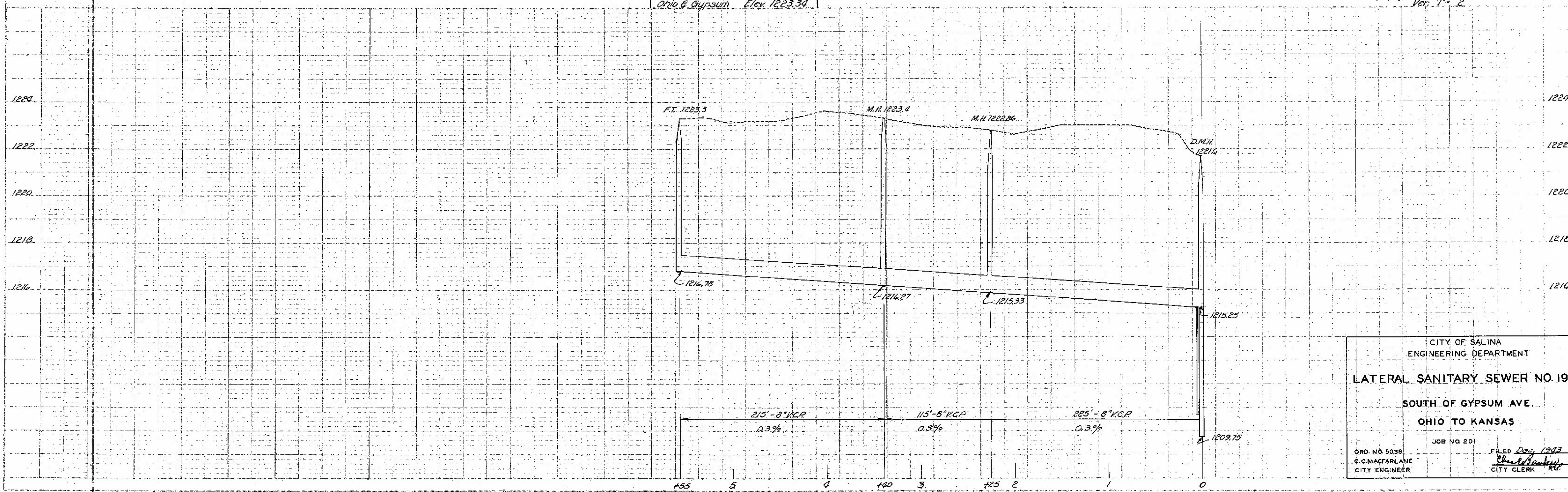


169

PLAN
DATE 12-1-1923
BY L.M.S.
CHECKED C.C.M.
5-1945



Scale: Hor. 1" = 50'
Ver. 1" = 2'



CITY OF SALINA
ENGINEERING DEPARTMENT

LATERAL SANITARY SEWER NO. 191

SOUTH OF GYPSUM AVE.

OHIO TO KANSAS

ORD. NO. 5038
C. C. MACFARLANE
CITY ENGINEER

JOB NO. 201

FILED Dec. 1923
C. C. MacFarlane
CITY CLERK