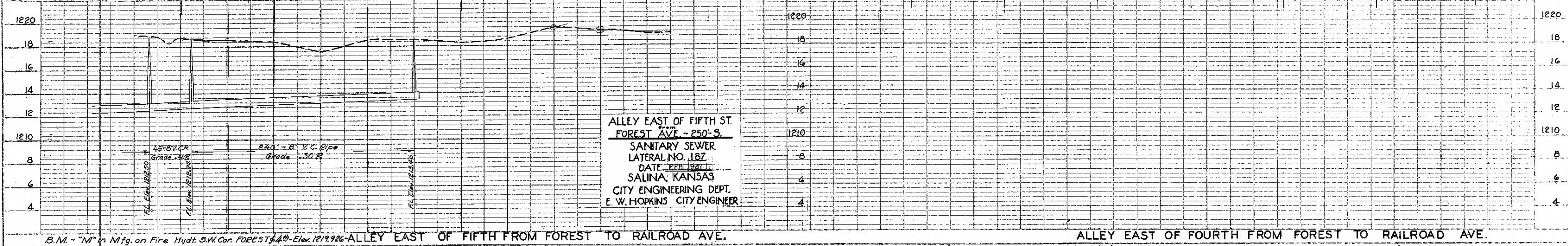
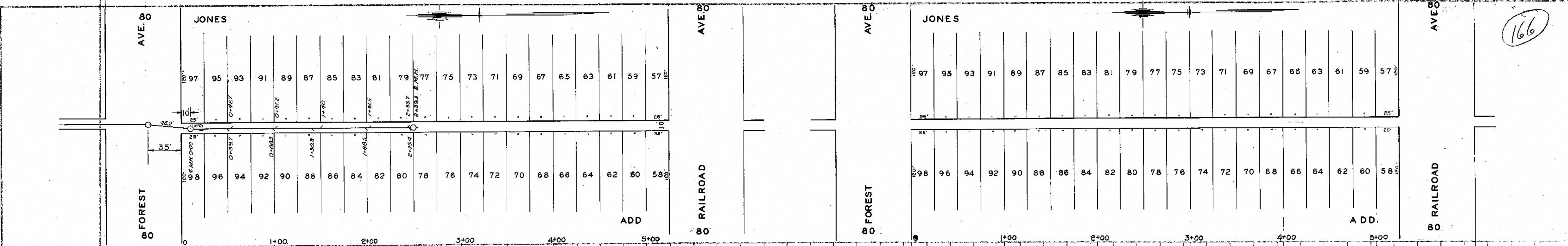


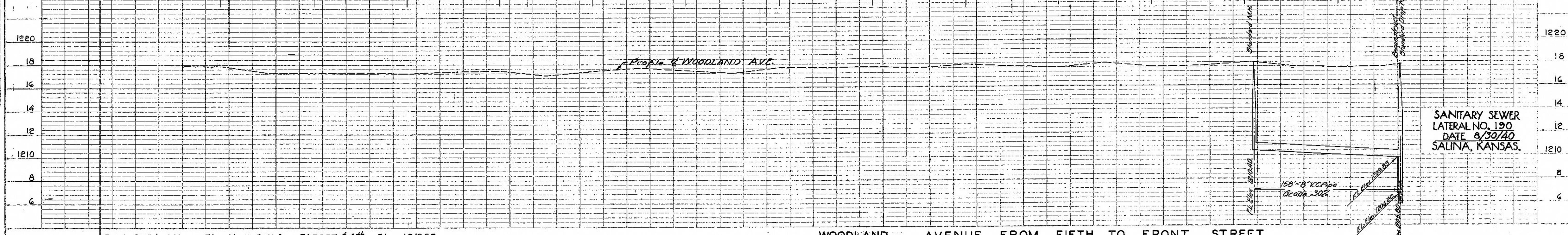
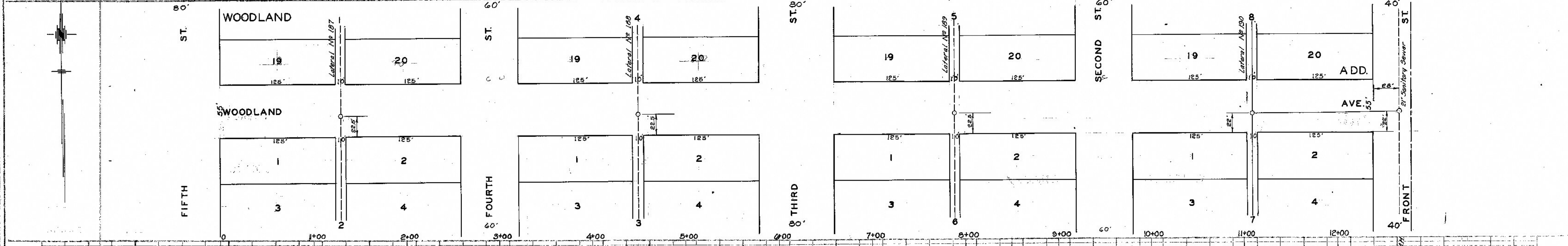
DATE 3/10/40
BY E. G. J. J. J.
CHECKED
ALIGNED CHECKED
NOTE BOOK
NO.



B.M. - "M" in Mfg. on Fire Hydr. S.W. Cor. FOREST & 4th - Elev. 1219.96 - ALLEY EAST OF FIFTH FROM FOREST TO RAILROAD AVE.

ALLEY EAST OF FOURTH FROM FOREST TO RAILROAD AVE.

DATE 3/10/40
BY J. J. J. J. J.
CHECKED
ALIGNED CHECKED
NOTE BOOK
NO.



B.M. - "M" in Mfg. on Fire Hydr. S.W. Cor. FOREST & 4th - Elev. 1219.93

WOODLAND AVENUE FROM FIFTH TO FRONT STREET