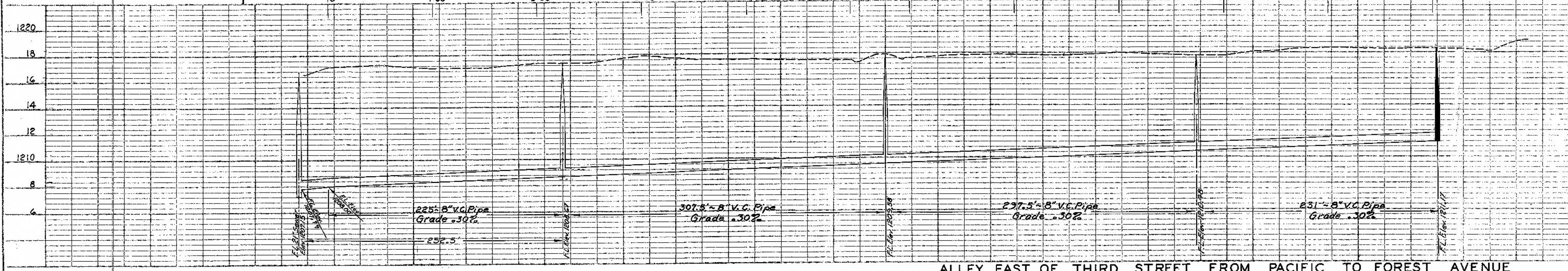
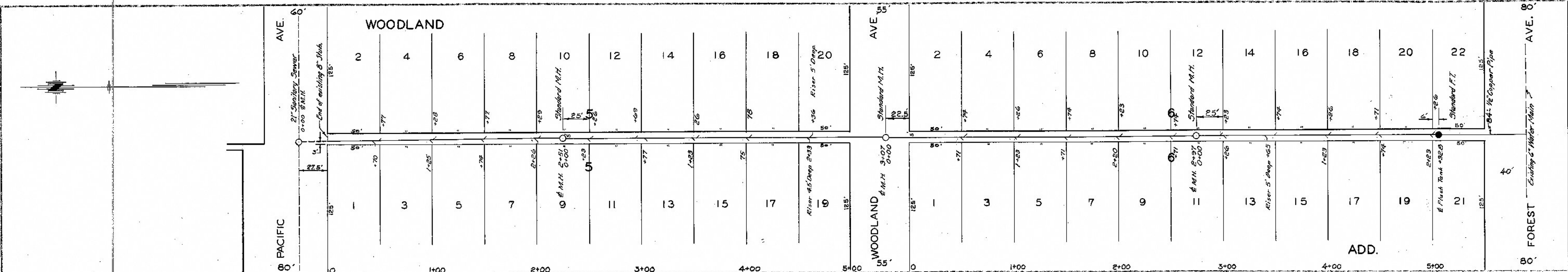


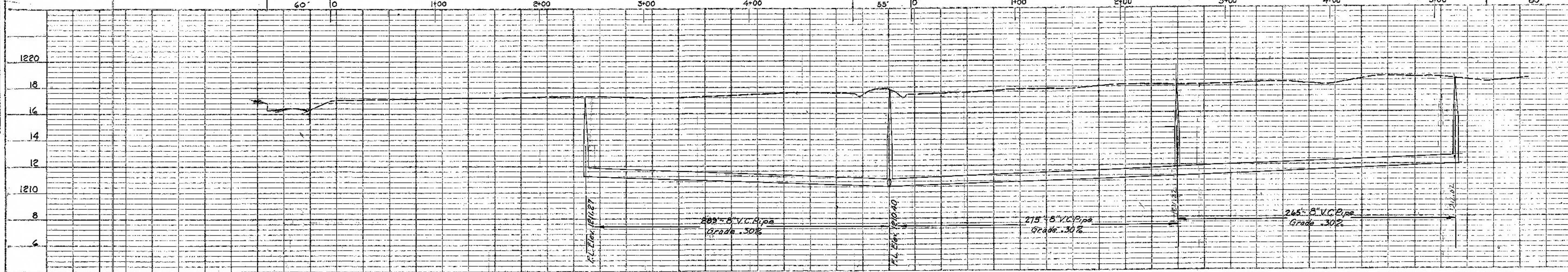
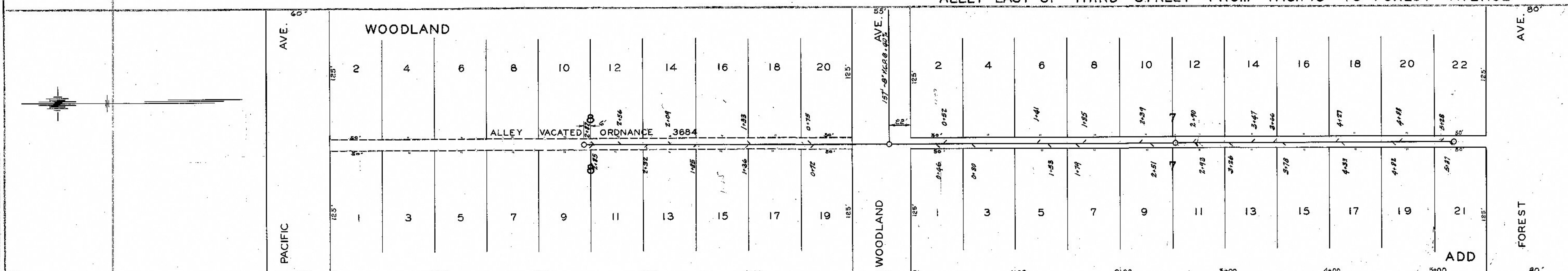
165

PLAN	DATE
REVISIONS	
1. SURVEY	
2. PLACING	
3. ERECTING	
4. FINISHING	
5. PAINTING	
6. CLEANING	
7. TESTING	
8. INSPECTION	
9. ACCEPTANCE	
10. RECORDING	
11. ARCHIVING	
12. RETRIEVAL	
13. MAINTENANCE	
14. REPAIRS	
15. DEMOLITION	
16. RECONSTRUCTION	
17. REVISIONS	
18. CLOSURE	
19. FINAL REPORT	
20. PROJECT COMPLETE	



ALLEY EAST OF THIRD ST.
 PACIFIC TO FOREST AVE.
 SANITARY SEWER
 LATERAL NO. 189
 DATE 4/15/41
 SALINA, KANSAS
 CITY ENGINEERING DEPT.
 E. W. HOPKINS, CITY ENGINEER

PROFILE	DATE
REVISIONS	
1. SURVEY	
2. PLACING	
3. ERECTING	
4. FINISHING	
5. PAINTING	
6. CLEANING	
7. TESTING	
8. INSPECTION	
9. ACCEPTANCE	
10. RECORDING	
11. ARCHIVING	
12. RETRIEVAL	
13. MAINTENANCE	
14. REPAIRS	
15. DEMOLITION	
16. RECONSTRUCTION	
17. REVISIONS	
18. CLOSURE	
19. FINAL REPORT	
20. PROJECT COMPLETE	



ALLEY EAST OF SECOND ST.
 PACIFIC TO FOREST AVE.
 SANITARY SEWER
 LATERAL NO. 190
 DATE 8/27/40
 SALINA, KANSAS
 CITY ENGINEERING DEPT.
 E. W. HOPKINS, CITY ENGINEER

This plan was made in 1940 as indicated by the title but was not let for contract until 1941. This sewer was constructed by H. J. Taylor Const'n. Co. and let as Lateral No. 240