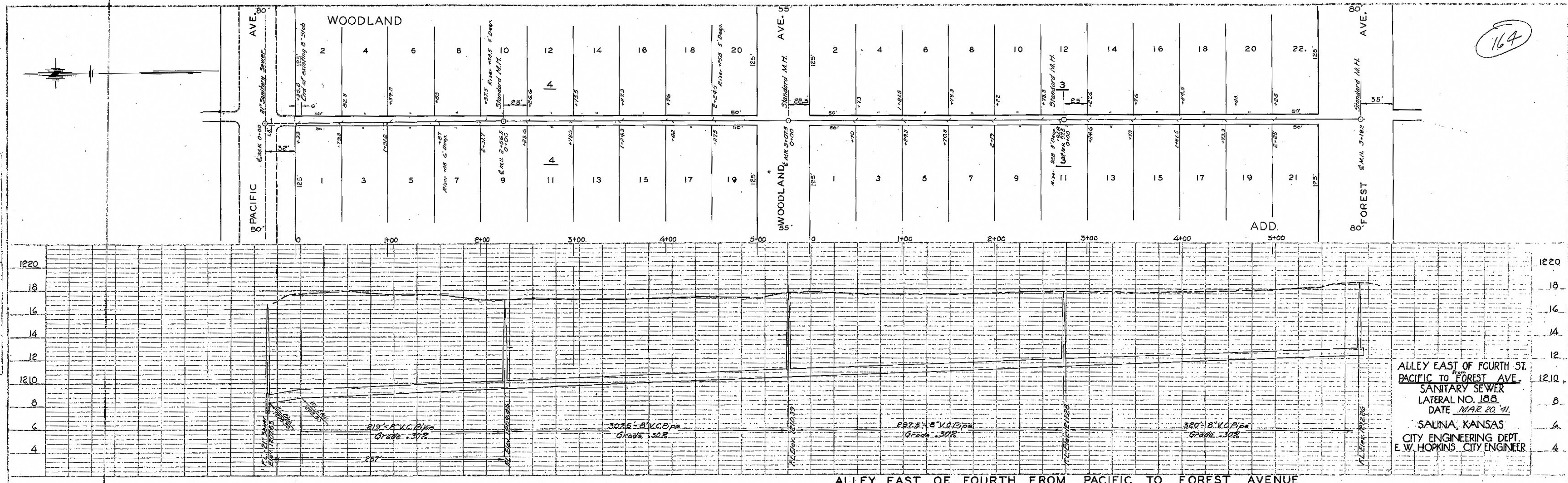


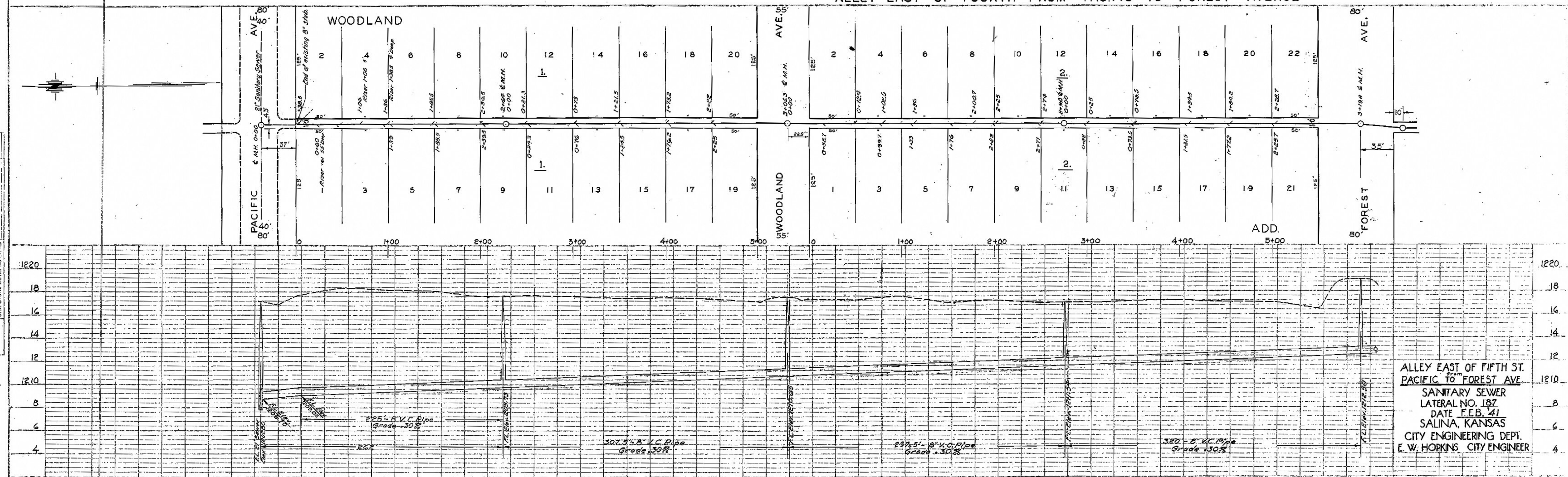
164

PLAN
 SHEET NO. 1
 DATE 3/20/41
 BY J. H. H. & CO.
 ENGINEERS
 SALINA, KANSAS

PROFILE
 SHEET NO. 2
 DATE 3/20/41
 BY J. H. H. & CO.
 ENGINEERS
 SALINA, KANSAS



ALLEY EAST OF FOURTH ST.
 PACIFIC TO FOREST AVE.
 SANITARY SEWER
 LATERAL NO. 186
 DATE MAR. 20 '41
 SALINA, KANSAS
 CITY ENGINEERING DEPT.
 E. W. HOPKINS, CITY ENGINEER



ALLEY EAST OF FIFTH ST.
 PACIFIC TO FOREST AVE.
 SANITARY SEWER
 LATERAL NO. 187
 DATE FEB. '41
 SALINA, KANSAS
 CITY ENGINEERING DEPT.
 E. W. HOPKINS, CITY ENGINEER

B.M. - 'M' in Mfg. on Fire Hydr. 3/4 Cor. SANTA FE & PACIFIC - Elev. 1219.74

ALLEY EAST OF FIFTH FROM PACIFIC TO FOREST AVENUE