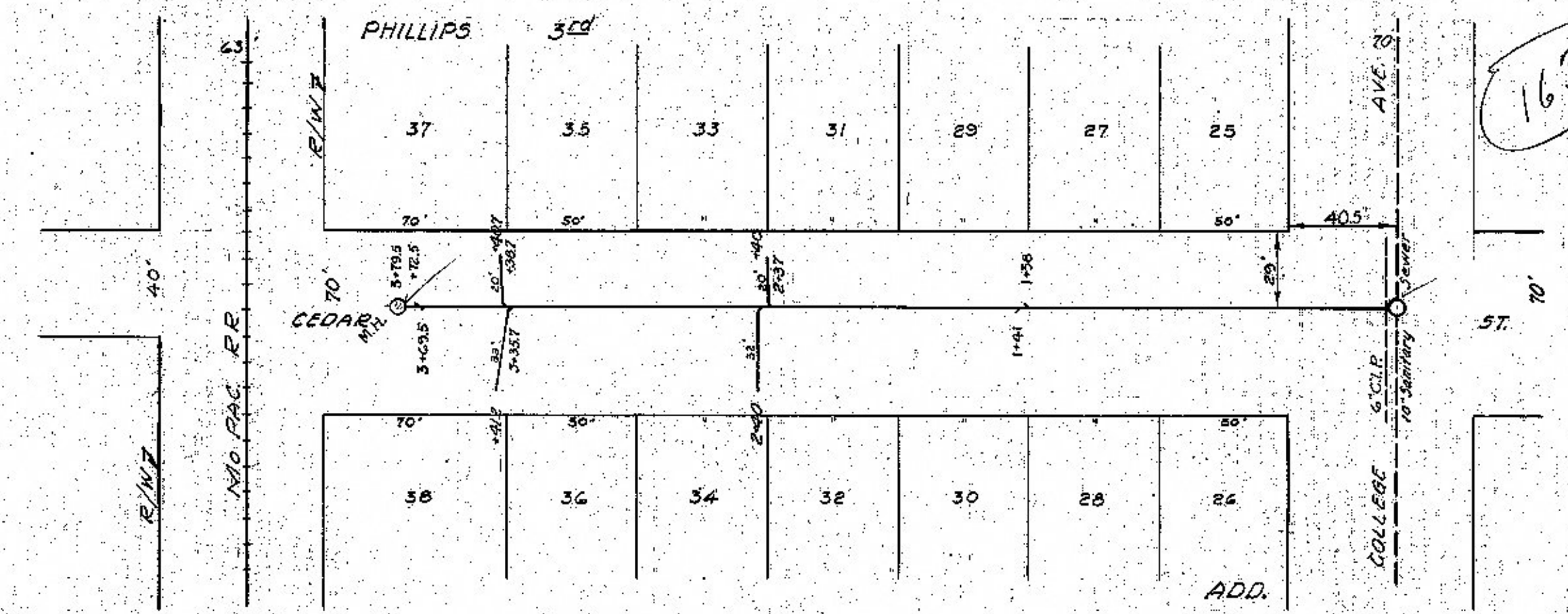


163



CEGAR STREET
 SANITARY SEWER
 LATERAL NO. 185
 DATE 2/20/40
 SALINA, KANSAS
 CITY ENGINEERING DEPT.
 E. W. HOPKINS, CITY ENGINEER

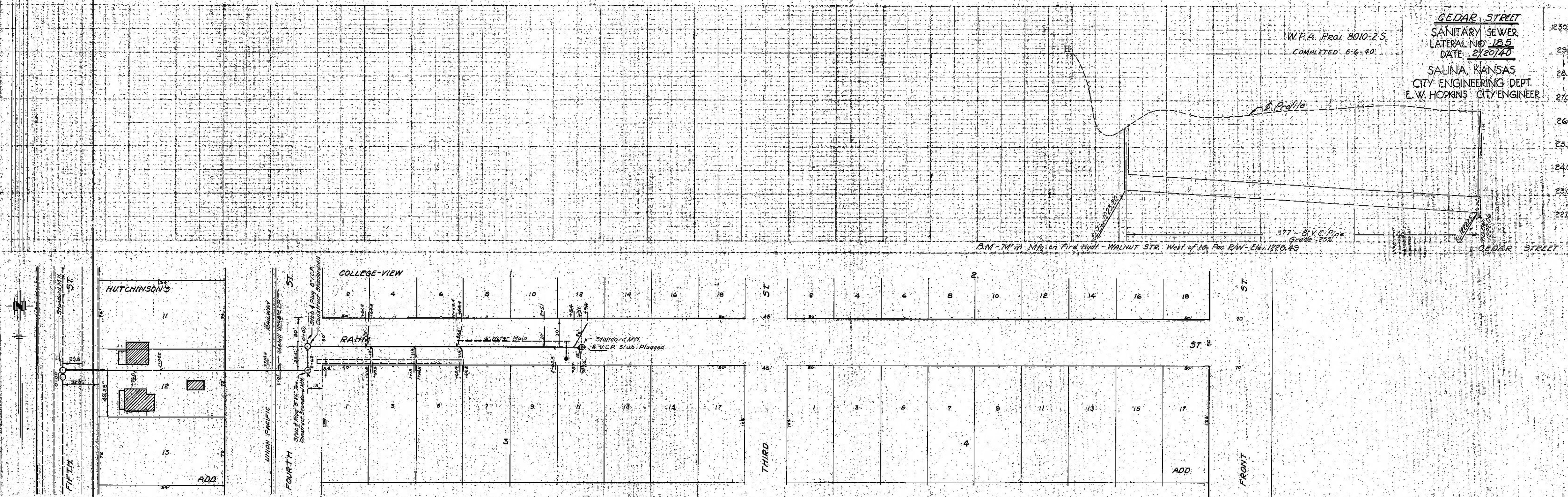
W.P.A. Proj. 8010-25
 COMPLETED 8-6-40

377' 8" V.C. Pipe
 Grade 25.0'

B.M. 14' in Mfg. on Fire Hydr. - WALNUT STR. West of Mo. Pac. R.W. Elev. 1228.45

230.00
290.00
28.00
27.00
26.00
25.00
24.00
23.00
22.00

CEGAR STREET



RAHM STREET
 SANITARY SEWER
 LATERAL NO. 186
 DATE 2/20/40
 SALINA, KANSAS
 CITY ENGINEERING DEPT.
 E. W. HOPKINS, CITY ENGINEER

W.P.A. Proj. 8010-25
 COMPLETED 8-1-40

262' 8" V.C. Pipe
 Grade 23.0'

290' 8" V.C. Pipe
 Grade 20.8'

B.M. 14' in Mfg. on Fire Hydr. on RAHM ST. bet. 3rd & 4th ST. Elev. 1231.31

RAHM STREET