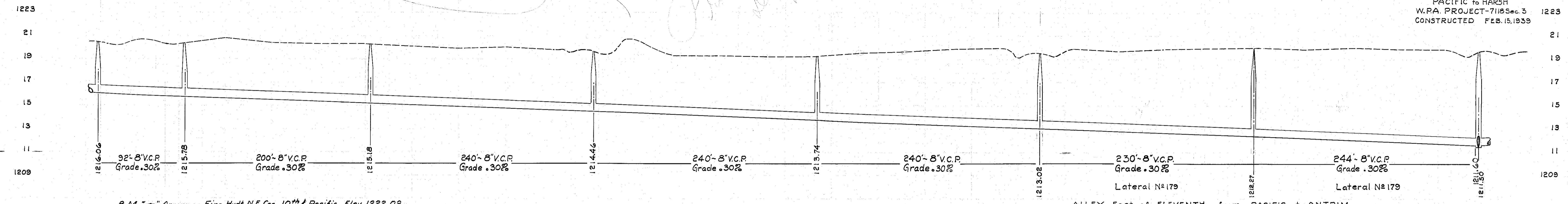
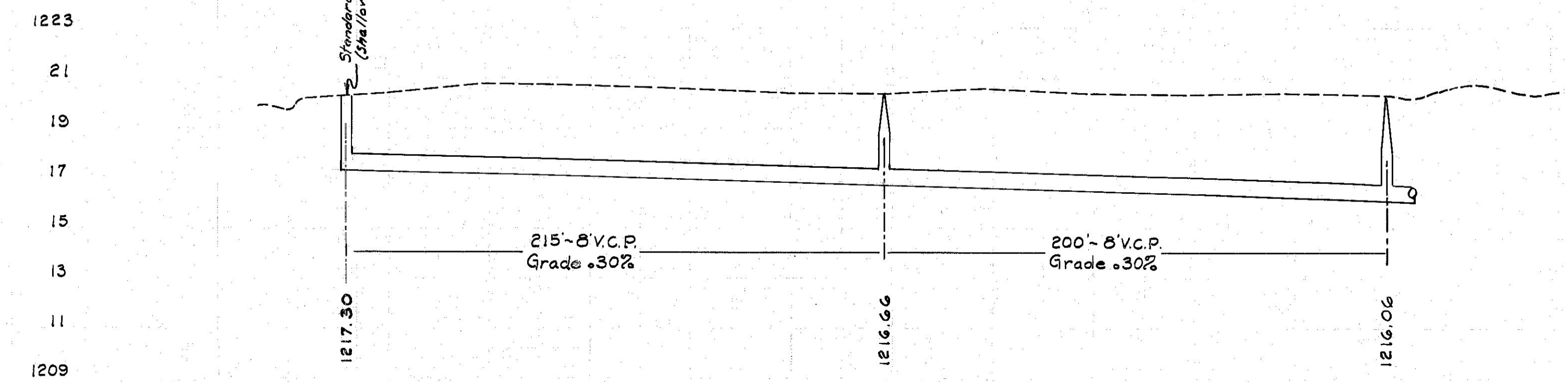
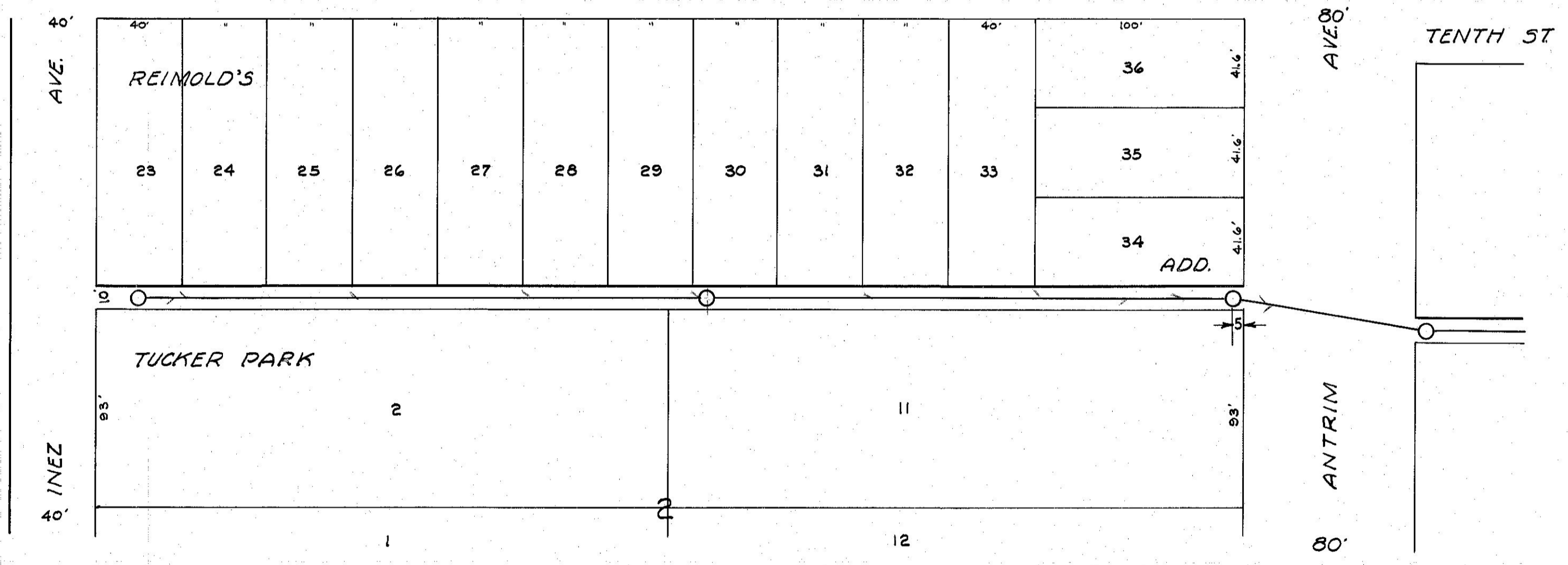


*J. Schmitt  
Design*

PACIFIC TO HARSH  
W.R.A. PROJECT-71183 sec. 3  
CONSTRUCTED FEB. 15, 1939



B.M. "→" Arrow on Fire Hydrant N.E. Cor. 10th & Pacific Elev. 1222.02



ALLEY West of TENCH from ANTRIM to INEZ