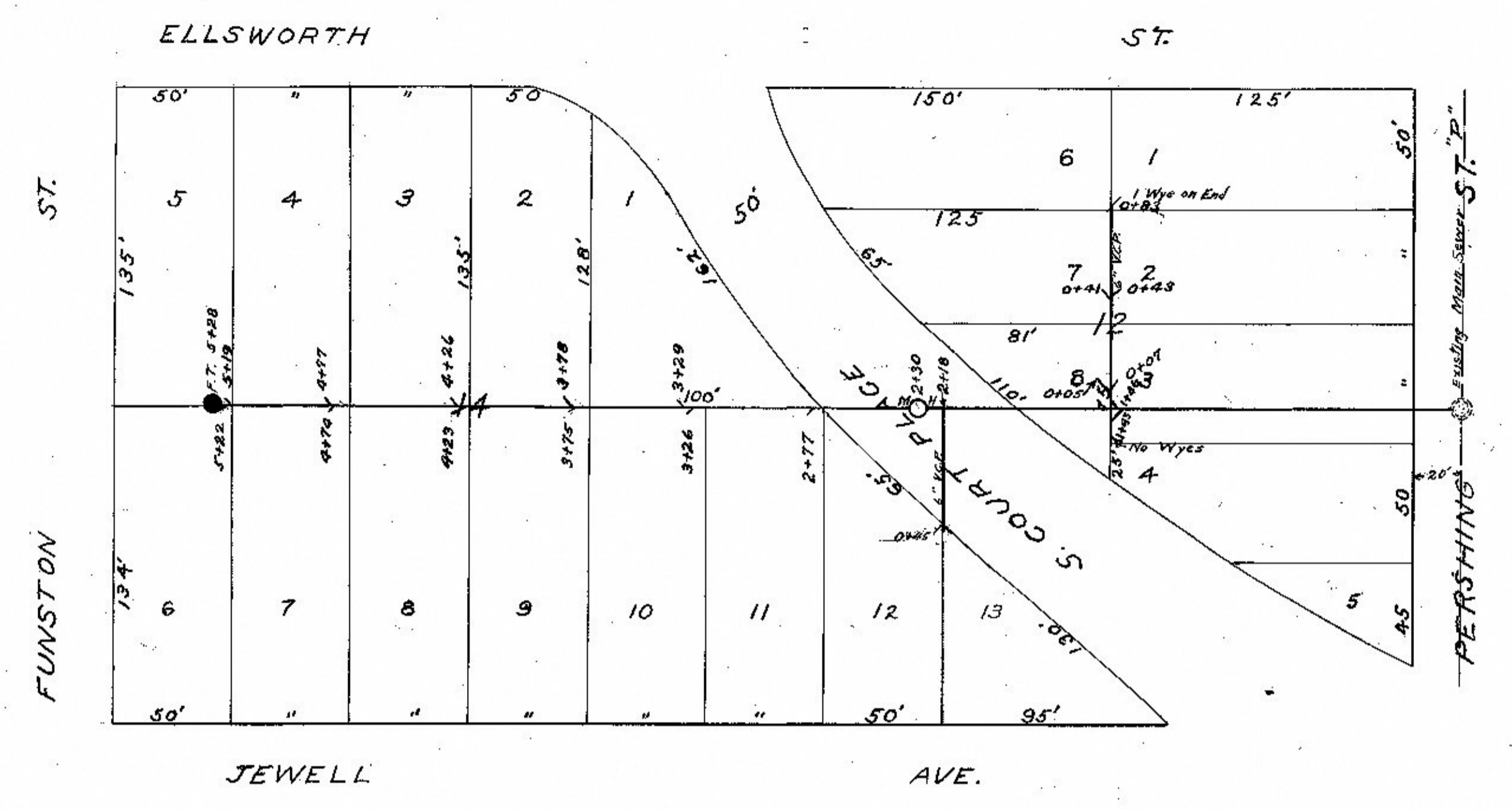


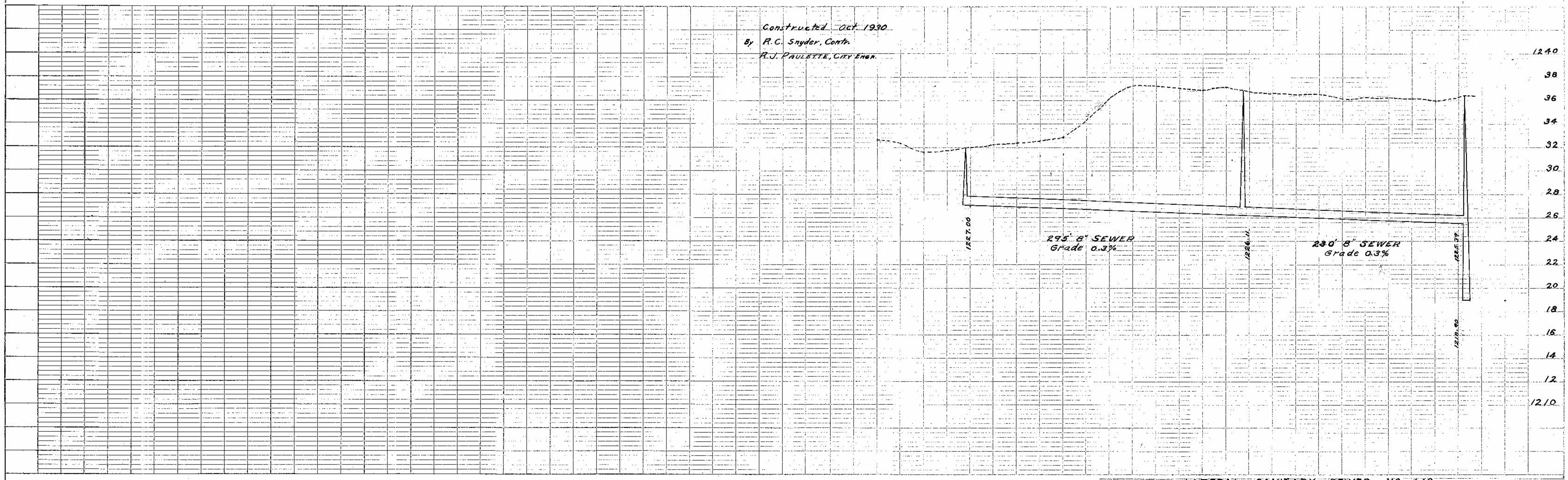
DATE 8/19/22
 BY L.A. CAMPBELL
 SURVEYED
 PLOTTED
 NOTE BOOK NO. 101
 ALIGNMENT CHECKED
 BY OF PLAN CHECKED

DATE 8/19/22
 BY L.A. CAMPBELL
 PROFILE
 PLOTTED
 NOTE BOOK NO. 101
 D.M.S. NOTE
 STRUCTURE NO. 101

FILED
 SEP 29 1930
 CHAS. E. BANKER
 CITY CLERK



Constructed Oct. 1930
 By R.C. Snyder, Contr.
 R.J. PAULETTE, CITY ENGR.



LATERAL SANITARY SEWER NO. 149